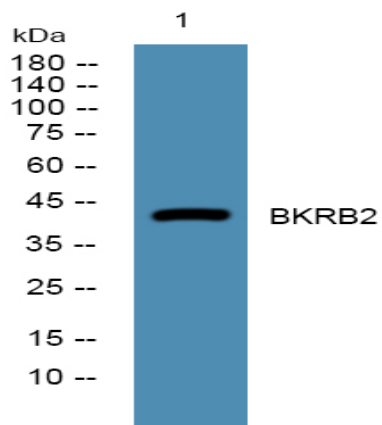


BKRB2 Polyclonal Antibody

| | |
|------------------------------|---|
| Catalog No : | YN2508 |
| Reactivity : | Human;Rat;Mouse; |
| Applications : | WB;ELISA |
| Target : | BKRB2 |
| Fields : | >>Calcium signaling pathway;>>cGMP-PKG signaling pathway;>>Sphingolipid signaling pathway;>>Neuroactive ligand-receptor interaction;>>Complement and coagulation cascades;>>Inflammatory mediator regulation of TRP channels;>>Regulation of actin cytoskeleton;>>Endocrine and other factor-regulated calcium reabsorption;>>Chagas disease;>>Pathways in cancer |
| Gene Name : | BDKRB2 BKR2 |
| Protein Name : | B2 bradykinin receptor (B2R) (BK-2 receptor) |
| Human Gene Id : | 624 |
| Human Swiss Prot No : | P30411 |
| Mouse Swiss Prot No : | P32299 |
| Rat Swiss Prot No : | P25023 |
| Immunogen : | Synthesized peptide derived from human protein . at AA range: 140-220 |
| Specificity : | BKRB2 Polyclonal Antibody detects endogenous levels of protein. |
| Formulation : | Liquid in PBS containing 50% glycerol, and 0.02% sodium azide. |
| Source : | Polyclonal, Rabbit,IgG |
| Dilution : | WB 1:500-2000 ELISA 1:5000-20000 |
| Purification : | The antibody was affinity-purified from rabbit antiserum by affinity-chromatography using epitope-specific immunogen. |

| | |
|-------------------------------|--|
| Concentration : | 1 mg/ml |
| Storage Stability : | -15°C to -25°C/1 year(Do not lower than -25°C) |
| Observed Band : | 43kD |
| Cell Pathway : | Calcium;Neuroactive ligand-receptor interaction;Complement and coagulation cascades;Regulates Actin and Cytoskeleton; |
| Background : | This gene encodes a receptor for bradykinin. The 9 aa bradykinin peptide elicits many responses including vasodilation, edema, smooth muscle spasm and pain fiber stimulation. This receptor associates with G proteins that stimulate a phosphatidylinositol-calcium second messenger system. Alternate start codons result in two isoforms of the protein. [provided by RefSeq, Jul 2008], |
| Function : | function:Receptor for bradykinin. It is associated with G proteins that activate a phosphatidylinositol-calcium second messenger system.,online information:Bradykinin receptor entry,similarity:Belongs to the G-protein coupled receptor 1 family.,tissue specificity:Ubiquitous. Widespread in normal smooth muscle tissue and neurons., |
| Subcellular Location : | Cell membrane; Multi-pass membrane protein. |
| Expression : | Ubiquitous. Widespread in normal smooth muscle tissue and neurons. |
| Sort : | 18106 |
| No4 : | 1 |
| Host : | Rabbit |
| Modifications : | Unmodified |

Products Images



Western blot analysis of lysates from DU145 cells, primary antibody was diluted at 1:1000, 4° over night