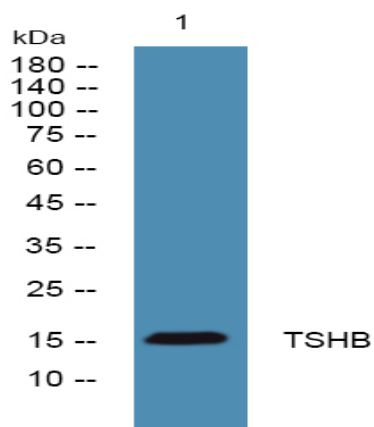


TSHB Polyclonal Antibody

Catalog No :	YN2217
Reactivity :	Human;Rat;Mouse
Applications :	WB;ELISA
Target :	TSHB
Fields :	>>cAMP signaling pathway;>>Neuroactive ligand-receptor interaction;>>Thyroid hormone synthesis;>>Regulation of lipolysis in adipocytes;>>Autoimmune thyroid disease
Gene Name :	TSHB
Protein Name :	Thyrotropin subunit beta (Thyroid-stimulating hormone subunit beta) (TSH-B) (TSH-beta) (Thyrotropin beta chain) (Thyrotropin alfa)
Human Gene Id :	7252
Human Swiss Prot No :	P01222
Mouse Swiss Prot No :	P12656
Rat Swiss Prot No :	P04652
Immunogen :	Synthesized peptide derived from part region of human protein
Specificity :	TSHB Polyclonal Antibody detects endogenous levels of protein.
Formulation :	Liquid in PBS containing 50% glycerol, and 0.02% sodium azide.
Source :	Polyclonal, Rabbit,IgG
Dilution :	WB 1:500-2000 ELISA 1:5000-20000
Purification :	The antibody was affinity-purified from rabbit antiserum by affinity-chromatography using epitope-specific immunogen.

Concentration :	1 mg/ml
Storage Stability :	-15°C to -25°C/1 year(Do not lower than -25°C)
Observed Band :	15kD
Cell Pathway :	Neuroactive ligand-receptor interaction;Autoimmune thyroid disease;
Background :	<p>The four human glycoprotein hormones chorionic gonadotropin (CG), luteinizing hormone (LH), follicle stimulating hormone (FSH), and thyroid stimulating hormone (TSH) are dimers consisting of alpha and beta subunits that are associated noncovalently. The alpha subunits of these hormones are identical, however, their beta chains are unique and confer biological specificity. Thyroid stimulating hormone functions in the control of thyroid structure and metabolism. The protein encoded by this gene is the beta subunit of thyroid stimulating hormone. Mutations in this gene are associated with congenital central and secondary hypothyroidism and Hashimoto's thyroiditis. Alternative splicing of this gene results in multiple transcript variants. [provided by RefSeq, May 2013],</p>
Function :	<p>function:Indispensable for the control of thyroid structure and metabolism.,online information:Clinical information on Thyrogen,online information:Thyroid-stimulating hormone entry,pharmaceutical:Available under the name Thyrogen (Genzyme). Used in combination with other tests to detect recurring or leftover thyroid cancer cells in patients with a history of certain types of thyroid cancer.,similarity:Belongs to the glycoprotein hormones subunit beta family.,subunit:Heterodimer of a common alpha chain and a unique beta chain which confers biological specificity to thyrotropin, lutropin, follitropin and gonadotropin.,</p>
Subcellular Location :	Secreted.
Sort :	23646
No4 :	1
Host :	Rabbit
Modifications :	Unmodified

Products Images



Western blot analysis of lysates from K562 cells, primary antibody was diluted at 1:1000, 4° over night