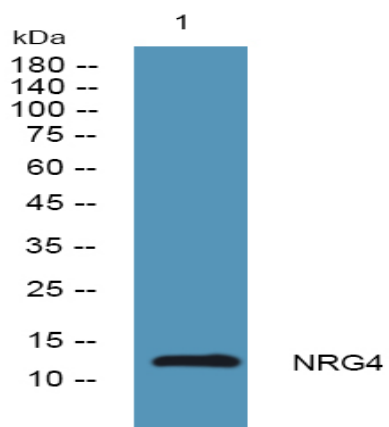


NRG4 Polyclonal Antibody

Catalog No :	YN2440
Reactivity :	Human;Mouse
Applications :	WB;ELISA
Target :	NRG4
Fields :	>>ErbB signaling pathway;>>Amyotrophic lateral sclerosis
Gene Name :	NRG4
Protein Name :	Pro-neuregulin-4, membrane-bound isoform (Pro-NRG4) [Cleaved into: Neuregulin-4 (NRG-4)]
Human Gene Id :	145957
Human Swiss Prot No :	Q8WWG1
Mouse Swiss Prot No :	Q9WTX4
Immunogen :	Synthesized peptide derived from human protein . at AA range: 11-60
Specificity :	NRG4 Polyclonal Antibody detects endogenous levels of protein.
Formulation :	Liquid in PBS containing 50% glycerol, and 0.02% sodium azide.
Source :	Polyclonal, Rabbit,IgG
Dilution :	WB 1:500-2000 ELISA 1:5000-20000
Purification :	The antibody was affinity-purified from rabbit antiserum by affinity-chromatography using epitope-specific immunogen.
Concentration :	1 mg/ml
Storage Stability :	-15°C to -25°C/1 year(Do not lower than -25°C)

Observed Band :	12kD
Cell Pathway :	ErbB_HER;
Background :	The neuregulins, including NRG4, activate type-1 growth factor receptors (see EGFR; MIM 131550) to initiating cell-to-cell signaling through tyrosine phosphorylation (Harari et al., 1999 [PubMed 10348342]).[supplied by OMIM, Mar 2008],
Function :	domain:ERBB receptor binding is elicited entirely by the EGF-like domain.,domain:The cytoplasmic domain may be involved in the regulation of trafficking and proteolytic processing. Regulation of the proteolytic processing involves initial intracellular domain dimerization.,function:Low affinity ligand for the ERBB4 tyrosine kinase receptor. Concomitantly recruits ERBB1 and ERBB2 coreceptors, resulting in ligand-stimulated tyrosine phosphorylation and activation of the ERBB receptors. Does not bind to the ERBB1, ERBB2 and ERBB3 receptors.,PTM:Extensive glycosylation precedes the proteolytic cleavage.,PTM:Proteolytic cleavage close to the plasma membrane on the external face leads to the release of the soluble growth factor form.,similarity:Belongs to the neuregulin family.,similarity:Contains 1 EGF-like domain.,subcellular location:Does not seem to be active.,
Subcellular Location :	[Pro-neuregulin-4, membrane-bound isoform]: Cell membrane ; Single-pass type I membrane protein . Does not seem to be active. .; [Neuregulin-4]: Secreted .
Expression :	Breast,Liver,Prostate,
Sort :	20451
No4 :	1
Host :	Rabbit
Modifications :	Unmodified

Products Images



Western blot analysis of lysates from DU145 cells, primary antibody was diluted at 1:1000, 4° over night