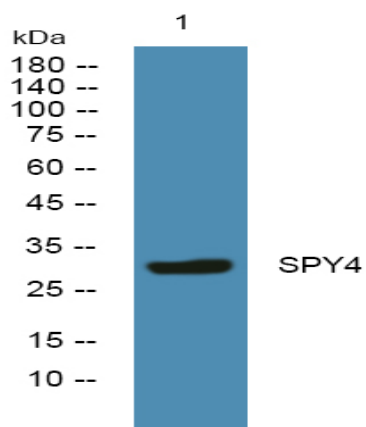


## SPY4 Polyclonal Antibody

<b>Catalog No :</b>	YN2319
<b>Reactivity :</b>	Human;Mouse
<b>Applications :</b>	WB;ELISA
<b>Target :</b>	SPY4
<b>Gene Name :</b>	SPRY4
<b>Protein Name :</b>	Protein sprouty homolog 4 (Spry-4)
<b>Human Gene Id :</b>	81848
<b>Human Swiss Prot No :</b>	Q9C004
<b>Mouse Swiss Prot No :</b>	Q9WTP2
<b>Immunogen :</b>	Synthesized peptide derived from human protein . at AA range: 230-310
<b>Specificity :</b>	SPY4 Polyclonal Antibody detects endogenous levels of protein.
<b>Formulation :</b>	Liquid in PBS containing 50% glycerol, and 0.02% sodium azide.
<b>Source :</b>	Polyclonal, Rabbit,IgG
<b>Dilution :</b>	WB 1:500-2000 ELISA 1:5000-20000
<b>Purification :</b>	The antibody was affinity-purified from rabbit antiserum by affinity-chromatography using epitope-specific immunogen.
<b>Concentration :</b>	1 mg/ml
<b>Storage Stability :</b>	-15°C to -25°C/1 year(Do not lower than -25°C)
<b>Observed Band :</b>	32kD

<b>Cell Pathway :</b>	Jak_STAT;
<b>Background :</b>	This gene encodes a member of a family of cysteine- and proline-rich proteins. The encoded protein is an inhibitor of the receptor-transduced mitogen-activated protein kinase (MAPK) signaling pathway. Activity of this protein impairs the formation of active GTP-RAS. Nucleotide variation in this gene has been associated with hypogonadotropic hypogonadism 17 with or without anosmia. Alternative splicing results in a multiple transcript variants. [provided by RefSeq, Jun 2014],
<b>Function :</b>	domain:The Cys-rich domain is responsible for the localization of the protein to the membrane ruffles.,function:Suppresses the insulin receptor and EGFR-transduced MAPK signaling pathway, but does not inhibit MAPK activation by a constitutively active mutant Ras. Probably impairs the formation of GTP-Ras.,similarity:Belongs to the sprouty family.,similarity:Contains 1 SPR (sprouty) domain.,subunit:Interacts with the C-terminus of TESK1.,
<b>Subcellular Location :</b>	Cytoplasm . Cell projection, ruffle membrane ; Peripheral membrane protein ; Cytoplasmic side . Found in the cytoplasm in unstimulated cells but is translocated to the membrane ruffles in cells stimulated with EGF (epidermal growth factor) (By similarity). Colocalizes with TESK1 in vesicular spots in the cytoplasm (PubMed:15584898). .
<b>Expression :</b>	Brain,Umbilical artery,
<b>Sort :</b>	21838
<b>No4 :</b>	1
<b>Host :</b>	Rabbit
<b>Modifications :</b>	Unmodified

## Products Images



Western blot analysis of lysates from U2OS cells, primary antibody was diluted at 1:1000, 4° over night