

HBEGF Polyclonal Antibody

Catalog No :	YN2310
Reactivity :	Human;Rat;Mouse
Applications :	WB;ELISA
Target :	HBEGF
Fields :	>>Endocrine resistance;>>ErbB signaling pathway;>>GnRH signaling pathway;>>Estrogen signaling pathway;>>Parathyroid hormone synthesis, secretion and action;>>Epithelial cell signaling in Helicobacter pylori infection;>>Coronavirus disease - COVID-19;>>Proteoglycans in cancer;>>Bladder cancer
Gene Name :	HBEGF DTR DTS HEGFL
Protein Name :	Proheparin-binding EGF-like growth factor [Cleaved into: Heparin-binding EGF-like growth factor (HB-EGF) (HBEGF) (Diphtheria toxin receptor) (DT-R)]
Human Gene Id :	1839
Human Swiss Prot No :	Q99075
Mouse Swiss Prot No :	Q06186
Rat Swiss Prot No :	Q06175
Immunogen :	Synthesized peptide derived from human protein . at AA range: 130-210
Specificity :	HBEGF Polyclonal Antibody detects endogenous levels of protein.
Formulation :	Liquid in PBS containing 50% glycerol, and 0.02% sodium azide.
Source :	Polyclonal, Rabbit,IgG
Dilution :	WB 1:500-2000 ELISA 1:5000-20000
Purification :	The antibody was affinity-purified from rabbit antiserum by affinity-

chromatography using epitope-specific immunogen.

Concentration : 1 mg/ml

Storage Stability : -15°C to -25°C/1 year(Do not lower than -25°C)

Observed Band : 22kD

Cell Pathway : ErbB_HER;GnRH;Epithelial cell signaling in Helicobacter pylori infection;

Background : function:May be involved in macrophage-mediated cellular proliferation. It is mitogenic for fibroblasts and smooth muscle but not endothelial cells. It is able to bind EGF receptors with higher affinity than EGF itself and is a far more potent mitogen for smooth muscle cells than EGF. Also acts as a diphtheria toxin receptor.,PTM:O-linked glycan attachment sites were determined by Edman degradation, O-glycanase digest suggests mucin-type glycosylation (done in HB-EGF purified from histiocytic lymphoma cell line U-937).,PTM:Several N-termini have been identified by direct sequencing. The forms with N-termini 63, 73 and 74 have been tested and found to be biologically active.,similarity:Contains 1 EGF-like domain.,subcellular location:Mature HB-EGF is released into the extracellular space and probably binds to a receptor.,

Function : function:May be involved in macrophage-mediated cellular proliferation. It is mitogenic for fibroblasts and smooth muscle but not endothelial cells. It is able to bind EGF receptors with higher affinity than EGF itself and is a far more potent mitogen for smooth muscle cells than EGF. Also acts as a diphtheria toxin receptor.,PTM:O-linked glycan attachment sites were determined by Edman degradation, O-glycanase digest suggests mucin-type glycosylation (done in HB-EGF purified from histiocytic lymphoma cell line U-937).,PTM:Several N-termini have been identified by direct sequencing. The forms with N-termini 63, 73 and 74 have been tested and found to be biologically active.,similarity:Contains 1 EGF-like domain.,subcellular location:Mature HB-EGF is released into the extracellular space and probably binds to a receptor.,

Subcellular Location : [Heparin-binding EGF-like growth factor]: Secreted, extracellular space. Mature HB-EGF is released into the extracellular space and probably binds to a receptor.; [Proheparin-binding EGF-like growth factor]: Cell membrane; Single-pass type I membrane protein.

Expression : Brain, Eye, Histiocytic lymphoma, Macrophage,

Tag : orthogonal

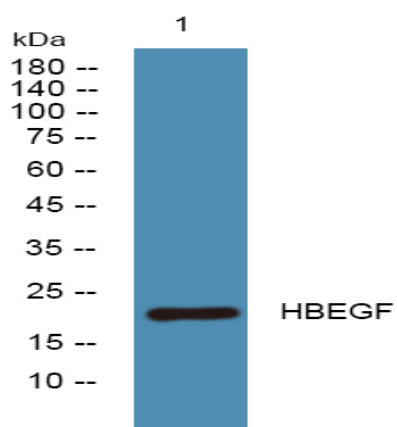
Sort : 19416

No4 : 1

Host : Rabbit

Modifications : Unmodified

Products Images



Western blot analysis of lysates from K562 cells, primary antibody was diluted at 1:1000, 4° over night