

RAP1B Polyclonal Antibody

Catalog No :	YN2237
Reactivity :	Human;Rat;Mouse
Applications :	WB;ELISA
Target :	RAP1B
Fields :	>>MAPK signaling pathway;>>Ras signaling pathway;>>Rap1 signaling pathway;>>cAMP signaling pathway;>>Chemokine signaling pathway;>>Focal adhesion;>>Platelet activation;>>Leukocyte transendothelial migration;>>Long-term potentiation;>>Neurotrophin signaling pathway;>>Cushing syndrome;>>Pancreatic secretion;>>Renal cell carcinoma;>>Lipid and atherosclerosis
Gene Name :	RAP1B OK/SW-cl.11
Protein Name :	Ras-related protein Rap-1b (GTP-binding protein smg p21B)
Human Gene Id :	5908
Human Swiss Prot No :	P61224
Mouse Swiss Prot No :	Q99JI6
Rat Swiss Prot No :	Q62636
Immunogen :	Synthesized peptide derived from human protein . at AA range: 110-190
Specificity :	RAP1B Polyclonal Antibody detects endogenous levels of protein.
Formulation :	Liquid in PBS containing 50% glycerol, and 0.02% sodium azide.
Source :	Polyclonal, Rabbit,IgG
Dilution :	WB 1:500-2000 ELISA 1:5000-20000
Purification :	The antibody was affinity-purified from rabbit antiserum by affinity-

chromatography using epitope-specific immunogen.

Concentration : 1 mg/ml

Storage Stability : -15°C to -25°C/1 year(Do not lower than -25°C)

Observed Band : 20kD

Cell Pathway : MAPK_ERK_Growth;MAPK_G_Protein;Chemokine;Focal adhesion;Leukocyte transendothelial migration;Long-term potentiation;Neurotrophin;Renal cell carcinoma;

Background : This gene encodes a member of the RAS-like small GTP-binding protein superfamily. Members of this family regulate multiple cellular processes including cell adhesion and growth and differentiation. This protein localizes to cellular membranes and has been shown to regulate integrin-mediated cell signaling. This protein also plays a role in regulating outside-in signaling in platelets. Alternate splicing results in multiple transcript variants. Pseudogenes of this gene are found on chromosomes 3, 5, 6 and 9. [provided by RefSeq, Oct 2011],

Function : enzyme regulation:Activated by guanine nucleotide-exchange factor (GEF) EPAC2 in a cAMP-dependent manner.,similarity:Belongs to the small GTPase superfamily. Ras family.,subcellular location:May shuttle between plasma membrane and cytosol.,subunit:Interacts with SGSM1, SGSM2 and SGSM3.,

Subcellular Location : Cell membrane . Cytoplasm, cytosol . Cell junction . May shuttle between plasma membrane and cytosol (PubMed:3141412). Presence of KRIT1 and CDH5 is required for its localization to the cell junction (PubMed:20332120). .

Expression : Amygdala,Brain,Chondrosarcoma,Colon adenocarcinoma,Placenta,Platele

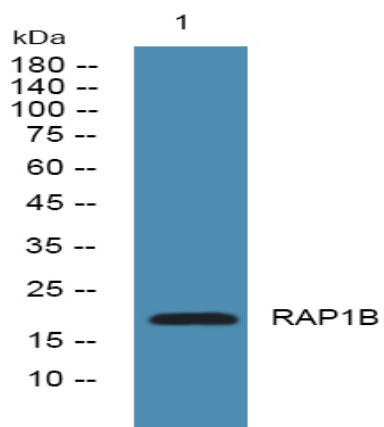
Sort : 21174

No4 : 1

Host : Rabbit

Modifications : Unmodified

Products Images



Western blot analysis of lysates from A431 cells, primary antibody was diluted at 1:1000, 4° over night