

E-Cadherin (PT0009R) rabbit mAb

Catalog No :	YM7077
Reactivity :	Human;Mouse (predicted: Rat)
Applications :	IHC;WB;ELISA
Target :	E-cadherin
Fields :	>>Rap1 signaling pathway;>>Apelin signaling pathway;>>Hippo signaling pathway;>>Cell adhesion molecules;>>Adherens junction;>>Bacterial invasion of epithelial cells;>>Pathways in cancer;>>Endometrial cancer;>>Thyroid cancer;>>Melanoma;>>Bladder cancer;>>Gastric cancer
Gene Name :	CDH1 CDHE UVO
Protein Name :	Cadherin-1 (CAM 120/80) (Epithelial cadherin) (E-cadherin) (Uvomorulin) (CD antigen CD324) [Cleaved into: E-Cad/CTF1; E-Cad/CTF2; E-Cad/CTF3]
Human Gene Id :	999
Human Swiss Prot No :	P12830
Immunogen :	Synthesized peptide derived from human protein. AA range:700-800
Specificity :	endogenous
Formulation :	PBS, 50% glycerol, 0.05% Proclin 300, 0.05%BSA
Source :	Monoclonal Rabbit IgG1, Kappa
Dilution :	IHC 1:100-500 WB 1:500-2000 ELISA: 1:20000
Purification :	Protein A
Storage Stability :	-15°C to -25°C/1 year(Do not lower than -25°C)
Molecularweight :	120kD

Observed Band : 130kD

Background : This gene encodes a classical cadherin of the cadherin superfamily. Alternative splicing results in multiple transcript variants, at least one of which encodes a preproprotein that is proteolytically processed to generate the mature glycoprotein. This calcium-dependent cell-cell adhesion protein is comprised of five extracellular cadherin repeats, a transmembrane region and a highly conserved cytoplasmic tail. Mutations in this gene are correlated with gastric, breast, colorectal, thyroid and ovarian cancer. Loss of function of this gene is thought to contribute to cancer progression by increasing proliferation, invasion, and/or metastasis. The ectodomain of this protein mediates bacterial adhesion to mammalian cells and the cytoplasmic domain is required for internalization. This gene is present in a gene cluster with other members of the cadherin family on chromosome 16. [provided by RefSeq, Nov 2015],

Function : disease:Defects in CDH1 are a cause of gastric cancer [MIM:137215]; also known as hereditary familial diffuse gastric cancer (HDGC).,disease:Defects in CDH1 are a cause of susceptibility to endometrial cancer [MIM:608089].,disease:Defects in CDH1 are associated with ovarian cancer [MIM:167000]. Ovarian cancer is the leading cause of death from gynecologic malignancy. It is characterized by advanced presentation with loco-regional dissemination in the peritoneal cavity and the rare incidence of visceral metastases. These typical features relate to the biology of the disease, which is a principal determinant of outcome.,disease:Defects in CDH1 are involved in dysfunction of the cell-cell adhesion system, triggering cancer invasion (gastric, breast, ovary, endometrium and thyroid) and metastasis.,function:Cadherins are calcium dependent cell adhesion proteins.,function:Cadherins are calcium

Subcellular Location : Membranous

Expression : Non-neural epithelial tissues.

Tag : recombinant

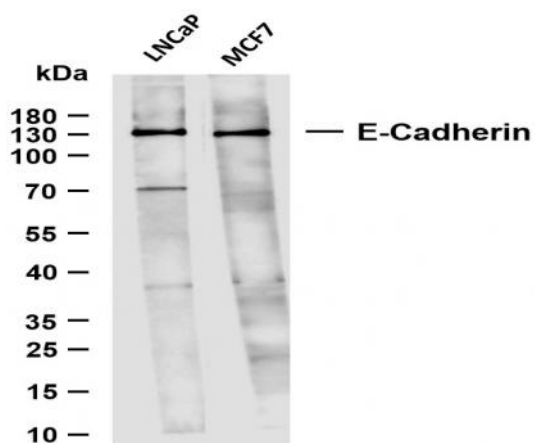
Sort : 5376

No4 : 1

Host : Rabbit

Modifications : Unmodified

Products Images



Various whole cell lysates were separated by 10% SDS-PAGE, and the membrane was blotted with anti-E-Cadherin (PT0009R) antibody. The HRP-conjugated Goat anti-Rabbit IgG(H + L) antibody was used to detect the antibody. Lane 1:LNCaP Lane 2:MCF7 Predicted band size: 120kDa Observed band size: 130kDa