

**CEA (carcinoembryonic antigen) (PT0031R) rabbit mAb**

<b>Catalog No :</b>	YM7245
<b>Reactivity :</b>	Human;
<b>Applications :</b>	IHC;ELISA
<b>Target :</b>	CEA
<b>Gene Name :</b>	CEACAM5
<b>Protein Name :</b>	Carcinoembryonic antigen-related cell adhesion molecule 5
<b>Human Gene Id :</b>	1048
<b>Human Swiss Prot No :</b>	P06731
<b>Mouse Swiss Prot No :</b>	Q3UKK2
<b>Immunogen :</b>	Recombinant protein. AA range:35-314
<b>Specificity :</b>	endogenous
<b>Formulation :</b>	PBS, 50% glycerol, 0.05% Proclin 300, 0.05%BSA
<b>Source :</b>	Monoclonal Rabbit IgG1, Kappa
<b>Dilution :</b>	IHC 1:100-500 ELISA: 1:20000
<b>Purification :</b>	Protein A
<b>Storage Stability :</b>	-15°C to -25°C/1 year(Do not lower than -25°C)
<b>Background :</b>	<p>This gene encodes a cell surface glycoprotein that represents the founding member of the carcinoembryonic antigen (CEA) family of proteins. The encoded protein is used as a clinical biomarker for gastrointestinal cancers and may promote tumor development through its role as a cell adhesion molecule. Additionally, the encoded protein may regulate differentiation, apoptosis, and cell polarity. This gene is present in a CEA family gene cluster on chromosome 19.</p>

Alternative splicing results in multiple transcript variants. [provided by RefSeq, Jul 2015],

**Function :** function:Cell surface glycoprotein that plays a role in cell adhesion and in intracellular signaling. Receptor for E.coli Dr adhesins.,PTM:Complex immunoreactive glycoprotein with a MW of 180 kDa comprising 60% carbohydrate.,similarity:Belongs to the immunoglobulin superfamily. CEA family.,similarity:Contains 7 Ig-like (immunoglobulin-like) domains.,subunit:Homodimer. Binding of E.coli Dr adhesins leads to dissociation of the homodimer.,tissue specificity:Found in adenocarcinomas of endodermally derived digestive system epithelium and fetal colon.,

**Subcellular Location :** Cytoplasmic, Membranous

**Expression :** Expressed in columnar epithelial and goblet cells of the colon (at protein level) (PubMed:10436421). Found in adenocarcinomas of endodermally derived digestive system epithelium and fetal colon.

**Tag :** recombinant

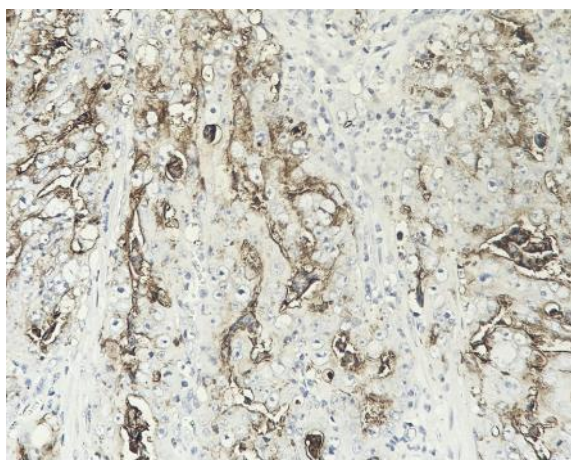
**Sort :** 3642

**No4 :** 1

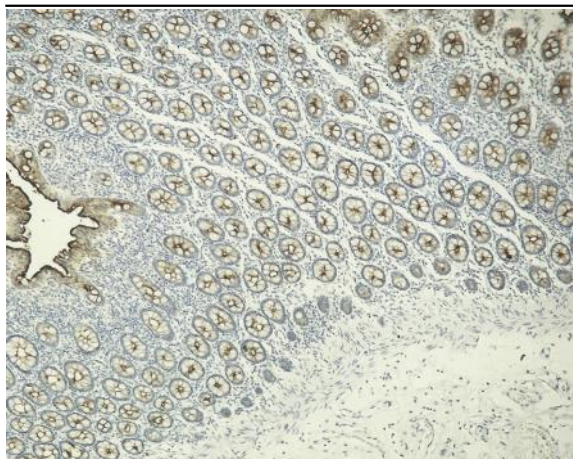
**Host :** Rabbit

**Modifications :** Unmodified

## Products Images



Human colon carcinoma tissue was stained with Anti-CEA (PT0031R) rabbit Antibody



Human colon tissue was stained with Anti-CEA (PT0031R) rabbit Antibody