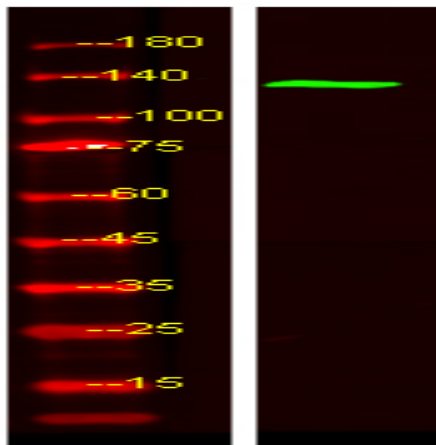


TAOK2 Polyclonal Antibody

Catalog No :	YN1886
Reactivity :	Human;Mouse;Rat
Applications :	WB;ELISA
Target :	TAOK2
Fields :	>>MAPK signaling pathway
Gene Name :	TAOK2 KIAA0881 MAP3K17 PSK PSK1 UNQ2971/PRO7431
Protein Name :	Serine/threonine-protein kinase TAO2 (EC 2.7.11.1) (Kinase from chicken homolog C) (hKFC-C) (Prostate-derived sterile 20-like kinase 1) (PSK-1) (PSK1) (Prostate-derived STE20-like kinase 1) (Thousand
Human Gene Id :	9344
Human Swiss Prot No :	Q9UL54
Mouse Swiss Prot No :	Q6ZQ29
Rat Swiss Prot No :	Q9JLS3
Immunogen :	Synthesized peptide derived from part region of human protein
Specificity :	TAOK2 Polyclonal Antibody detects endogenous levels of protein.
Formulation :	Liquid in PBS containing 50% glycerol, and 0.02% sodium azide.
Source :	Polyclonal, Rabbit,IgG
Dilution :	WB 1:500-2000 ELISA 1:5000-20000
Purification :	The antibody was affinity-purified from rabbit antiserum by affinity-chromatography using epitope-specific immunogen.
Concentration :	1 mg/ml

Storage Stability :	<u>-15°C to -25°C/1 year(Do not lower than -25°C)</u>
Observed Band :	<u>135kD</u>
Cell Pathway :	<u>MAPK_ERK_Growth;MAPK_G_Protein;</u>
Background :	<u>This gene encodes a serine/threonine protein kinase that is involved in many different processes, including, cell signaling, microtubule organization and stability, and apoptosis. Alternatively spliced transcript variants encoding different isoforms have been described for this gene. [provided by RefSeq, Oct 2011],</u>
Function :	<u>catalytic activity:ATP + a protein = ADP + a phosphoprotein.,cofactor:Magnesium.,function:Activates the JNK MAP kinase pathway through the specific activation of the upstream MKK3 and MKK6 kinases.,similarity:Belongs to the protein kinase superfamily.,similarity:Belongs to the protein kinase superfamily. STE Ser/Thr protein kinase family. STE20 subfamily.,similarity:Contains 1 protein kinase domain.,subcellular location:Found to be perinuclear and localized to vesicular compartment.,subunit:Interacts with MKK3 and MKK6 (By similarity). Self-associates.,tissue specificity:Ubiquitously expressed, with a higher level of expression in testis and brain.,</u>
Subcellular Location :	<u>Cytoplasmic vesicle membrane ; Multi-pass membrane protein . Cytoplasm, cytoskeleton. Nucleus. Catalytically active full-length phosphorylated isoform 1 localizes to microtubules in the cytoplasm predominantly on microtubule cables positioned around the nucleus. A C-terminally truncated form of isoform 1 is present in the nucleus; isoform 2 and kinase-defective, as well as full-length isoform 1 are excluded from the nucleus.; [Isoform 2]: Cell projection, dendrite. In dendrites, colocalizes with PCDH8. .</u>
Expression :	<u>Ubiquitously expressed, with a higher level of expression in testis and brain.</u>
Sort :	<u>22029</u>
No4 :	<u>1</u>
Host :	<u>Rabbit</u>
Modifications :	<u>Unmodified</u>

Products Images



Western Blot analysis of HEK293 lysis, using primary antibody at 1:1000 dilution. Secondary antibody(catalog#:RS23920) was diluted at 1:10000