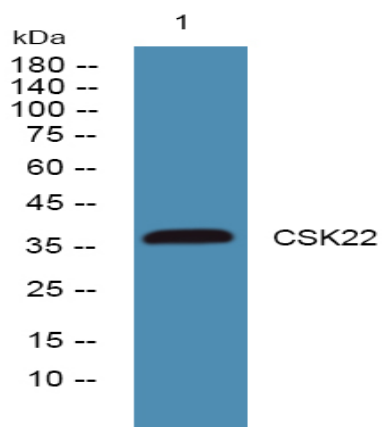


CSK22 Polyclonal Antibody

Catalog No :	YN1864
Reactivity :	Human;Mouse
Applications :	WB;ELISA
Target :	CSK22
Fields :	>>Ribosome biogenesis in eukaryotes;>>NF-kappa B signaling pathway;>>Mitophagy - animal;>>Wnt signaling pathway;>>Adherens junction;>>Alzheimer disease;>>Prion disease;>>Pathways of neurodegeneration - multiple diseases;>>Measles;>>PD-L1 expression and PD-1 checkpoint pathway in cancer
Gene Name :	CSNK2A2 CK2A2
Protein Name :	Casein kinase II subunit alpha' (CK II alpha') (EC 2.7.11.1)
Human Gene Id :	1459
Human Swiss Prot No :	P19784
Mouse Swiss Prot No :	O54833
Immunogen :	Synthesized peptide derived from part region of human protein
Specificity :	CSK22 Polyclonal Antibody detects endogenous levels of protein.
Formulation :	Liquid in PBS containing 50% glycerol, and 0.02% sodium azide.
Source :	Polyclonal, Rabbit,IgG
Dilution :	WB 1:500-2000 ELISA 1:5000-20000
Purification :	The antibody was affinity-purified from rabbit antiserum by affinity-chromatography using epitope-specific immunogen.
Concentration :	1 mg/ml

Storage Stability :	-15°C to -25°C/1 year(Do not lower than -25°C)
Observed Band :	38kD
Cell Pathway :	WNT;WNT-T CELLAdherens_Junction;Adherens_Junction;
Background :	<p>catalytic activity:ATP + a protein = ADP + a phosphoprotein.,function:Casein kinases are operationally defined by their preferential utilization of acidic proteins such as caseins as substrates. The alpha and alpha' chains contain the catalytic site. Participates in Wnt signaling. CK2 phosphorylates 'Ser-392' of p53/TP53 following UV irradiation.,similarity:Belongs to the protein kinase superfamily. Ser/Thr protein kinase family. CK2 subfamily.,similarity:Contains 1 protein kinase domain.,subunit:Tetramer composed of an alpha chain, an alpha' and two beta chains. Also component of a CK2-SPT16-SSRP1 complex composed of SSRP1, SUPT16H, CSNK2A1, CSNK2A2 and CSNK2B, the complex associating following UV irradiation.,</p>
Function :	<p>catalytic activity:ATP + a protein = ADP + a phosphoprotein.,function:Casein kinases are operationally defined by their preferential utilization of acidic proteins such as caseins as substrates. The alpha and alpha' chains contain the catalytic site. Participates in Wnt signaling. CK2 phosphorylates 'Ser-392' of p53/TP53 following UV irradiation.,similarity:Belongs to the protein kinase superfamily. Ser/Thr protein kinase family. CK2 subfamily.,similarity:Contains 1 protein kinase domain.,subunit:Tetramer composed of an alpha chain, an alpha' and two beta chains. Also component of a CK2-SPT16-SSRP1 complex composed of SSRP1, SUPT16H, CSNK2A1, CSNK2A2 and CSNK2B, the complex associating following UV irradiation.,</p>
Subcellular Location :	Nucleus . Cytoplasm . Interaction with SIRT6 prevents translocation into the nucleus. .
Expression :	Ovary,
Sort :	18656
No4 :	1
Host :	Rabbit
Modifications :	Unmodified

Products Images



Western blot analysis of lysates from K562 cells, primary antibody was diluted at 1:1000, 4° over night