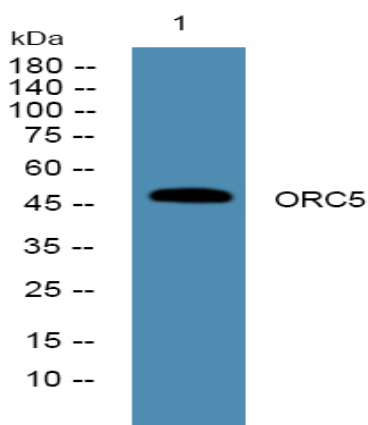


ORC5 Polyclonal Antibody

| | |
|------------------------------|---|
| Catalog No : | YN1830 |
| Reactivity : | Human;Mouse |
| Applications : | WB;ELISA |
| Target : | ORC5 |
| Fields : | >>Cell cycle |
| Gene Name : | ORC5 ORC5L |
| Protein Name : | Origin recognition complex subunit 5 |
| Human Gene Id : | 5001 |
| Human Swiss Prot No : | O43913 |
| Mouse Swiss Prot No : | Q9WUV0 |
| Immunogen : | Synthesized peptide derived from part region of human protein |
| Specificity : | ORC5 Polyclonal Antibody detects endogenous levels of protein. |
| Formulation : | Liquid in PBS containing 50% glycerol, and 0.02% sodium azide. |
| Source : | Polyclonal, Rabbit,IgG |
| Dilution : | WB 1:500-2000 ELISA 1:5000-20000 |
| Purification : | The antibody was affinity-purified from rabbit antiserum by affinity-chromatography using epitope-specific immunogen. |
| Concentration : | 1 mg/ml |
| Storage Stability : | -15°C to -25°C/1 year(Do not lower than -25°C) |

| | |
|-------------------------------|---|
| Observed Band : | 47kD |
| Cell Pathway : | Cell_Cycle_G1S;Cell_Cycle_G2M_DNA; |
| Background : | The origin recognition complex (ORC) is a highly conserved six subunit protein complex essential for the initiation of the DNA replication in eukaryotic cells. Studies in yeast demonstrated that ORC binds specifically to origins of replication and serves as a platform for the assembly of additional initiation factors such as Cdc6 and Mcm proteins. The protein encoded by this gene is a subunit of the ORC complex. Alternatively spliced transcript variants encoding distinct isoforms have been described. [provided by RefSeq, Oct 2010], |
| Function : | function:Component of the origin recognition complex (ORC) that binds origins of replication. It has a role in both chromosomal replication and mating type transcriptional silencing. Binds to the ARS consensus sequence (ACS) of origins of replication in an ATP-dependent manner.,similarity:Belongs to the ORC5 family.,subunit:ORC is composed of six subunits., |
| Subcellular Location : | Nucleus . Chromosome . |
| Expression : | Abundant in spleen, ovary, prostate, testis, and colon mucosa. |
| Sort : | 20722 |
| No4 : | 1 |
| Host : | Rabbit |
| Modifications : | Unmodified |

Products Images



Western blot analysis of lysates from Jurkat cells, primary antibody was diluted at 1:1000, 4° over night