

Somatostatin (ABT81R) rabbit mAb

Catalog No :	YM7276
Reactivity :	Human;Mouse;(predicted: Rat)
Applications :	IHC; ELISA
Target :	Somatostatin
Fields :	>>cAMP signaling pathway;>>Neuroactive ligand-receptor interaction;>>Growth hormone synthesis, secretion and action;>>Gastric acid secretion
Gene Name :	SST
Protein Name :	Somatostatin (Growth hormone release-inhibiting factor) [Cleaved into: Somatostatin-28; Somatostatin-14]
Human Gene Id :	6750
Human Swiss Prot No :	P61278
Immunogen :	Synthesized peptide derived from human Somatostatin AA range:50-116
Specificity :	This antibody detects endogenous levels of Somatostatin
Formulation :	PBS, 50% glycerol, 0.05% Proclin 300, 0.05%BSA
Source :	Monoclonal, Rabbit IgG1, Kappa
Dilution :	IHC 1:100-500, ELISA 1:5000-20000
Purification :	Recombinant Expression and Affinity purified
Storage Stability :	-15°C to -25°C/1 year(Do not lower than -25°C)
Background :	The hormone somatostatin has active 14 aa and 28 aa forms that are produced by alternate cleavage of the single preproprotein encoded by this gene. Somatostatin is expressed throughout the body and inhibits the release of numerous secondary hormones by binding to high-affinity G-protein-coupled

somatostatin receptors. This hormone is an important regulator of the endocrine system through its interactions with pituitary growth hormone, thyroid stimulating hormone, and most hormones of the gastrointestinal tract. Somatostatin also affects rates of neurotransmission in the central nervous system and proliferation of both normal and tumorigenic cells. [provided by RefSeq, Jul 2008],

Function :

function:Somatostatin inhibits the release of somatotropin.,online information:Somatostatin entry,pharmaceutical:A synthetic analog known as octreotide or SMS 201-995 is available under the name Sandostatin (Novartis). It is used for the treatment of a variety of disorders including acromegaly and the symptomatic treatment of carcinoid tumors and vasoactive intestinal peptide tumors.,similarity:Belongs to the somatostatin family.,

Subcellular Location :

Cytoplasmic

Expression :

Fetal brain,

Tag :

hot,recombinant

Sort :

16502

No4 :

1

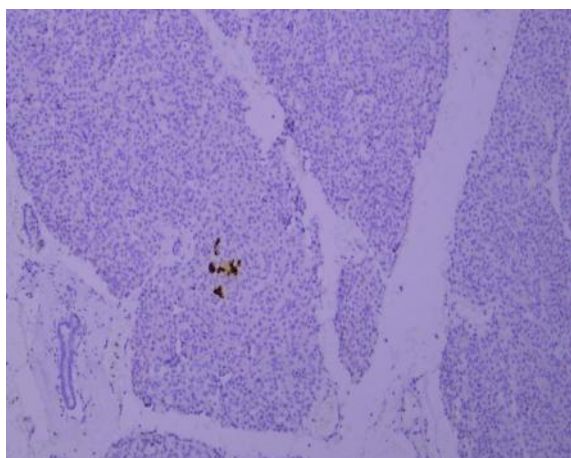
Host :

Rabbit

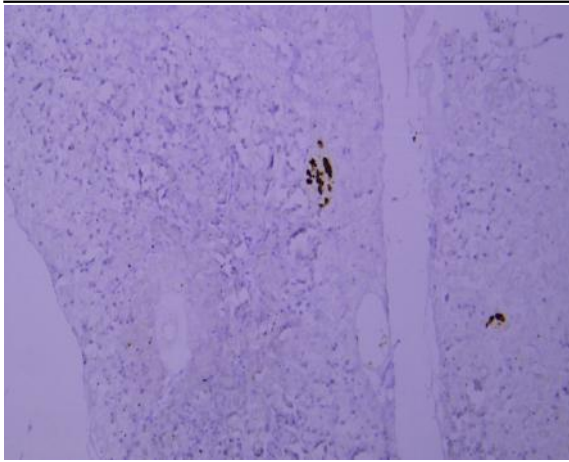
Modifications :

Unmodified

Products Images



Immunohistochemical analysis of paraffin-embedded human Pancreas-1. 1, Antibody was incubated at 4° overnight. 2, Citrate buffer of pH6.0 was used for antigen retrieval. 3,Secondary antibody was diluted at 1:200(room temperature, 30min).



Immunohistochemical analysis of paraffin-embedded human Pancreas. 1, Antibody was incubated at 4° overnight. 2, Citrate buffer of pH6.0 was used for antigen retrieval. 3, Secondary antibody was diluted at 1:200(room temperature, 30min).