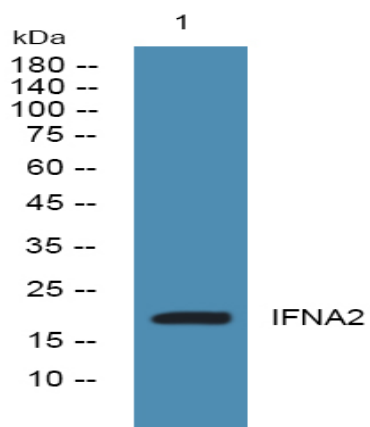


IFNA2 Polyclonal Antibody

Catalog No :	YN1759
Reactivity :	Human;Mouse
Applications :	WB;ELISA
Target :	IFNA2
Fields :	>>Cytokine-cytokine receptor interaction;>>PI3K-Akt signaling pathway;>>Necroptosis;>>Toll-like receptor signaling pathway;>>NOD-like receptor signaling pathway;>>RIG-I-like receptor signaling pathway;>>Cytosolic DNA-sensing pathway;>>JAK-STAT signaling pathway;>>Natural killer cell mediated cytotoxicity;>>Alcoholic liver disease;>>Tuberculosis;>>Hepatitis C;>>Hepatitis B;>>Measles;>>Human cytomegalovirus infection;>>Influenza A;>>Human papillomavirus infection;>>Kaposi sarcoma-associated herpesvirus infection;>>Herpes simplex virus 1 infection;>>Epstein-Barr virus infection;>>Human immunodeficiency virus 1 infection;>>Coronavirus disease - COVID-19;>>Pathways in cancer;>>Autoimmune thyroid disease;>>Lipid and atherosclerosis
Gene Name :	IFNA2
Protein Name :	Interferon alpha-2 (IFN-alpha-2) (Interferon alpha-A) (LeIF A)
Human Gene Id :	3440
Human Swiss Prot No :	P01563
Mouse Swiss Prot No :	P01573
Immunogen :	Synthesized peptide derived from part region of human protein
Specificity :	IFNA2 Polyclonal Antibody detects endogenous levels of protein.
Formulation :	Liquid in PBS containing 50% glycerol, and 0.02% sodium azide.
Source :	Polyclonal, Rabbit,IgG
Dilution :	WB 1:500-2000 ELISA 1:5000-20000

Purification :	The antibody was affinity-purified from rabbit antiserum by affinity-chromatography using epitope-specific immunogen.
Concentration :	1 mg/ml
Storage Stability :	-15°C to -25°C/1 year(Do not lower than -25°C)
Observed Band :	20kD
Cell Pathway :	Cytokine-cytokine receptor interaction;Regulation of autophagy;Antigen processing and presentation;Toll_Like;RIG-I-like receptor;Cytosolic DNA-sensing pathway;Jak_STAT;Natural killer cell mediated cyt
Background :	This gene is a member of the alpha interferon gene cluster on chromosome 9. The encoded protein is a cytokine produced in response to viral infection. Use of the recombinant form of this protein has been shown to be effective in reducing the symptoms and duration of the common cold. [provided by RefSeq, Jun 2011],
Function :	function:Produced by macrophages, IFN-alpha have antiviral activities. Interferon stimulates the production of two enzymes: a protein kinase and an oligoadenylate synthetase.,pharmaceutical:Available under the names Roferon-A (Roche) or Intron-A (Schering-Plough). Used as an anticancer drug for its antiproliferative activity.,polymorphism:Three forms exist; alpha-2a (shown here), alpha-2b and alpha-2c.,similarity:Belongs to the alpha/beta interferon family.,
Subcellular Location :	Secreted .
Expression :	Bone marrow tumor,PCR rescued clones,Placenta,Pooled tissue,
Sort :	19574
No4 :	1
Host :	Rabbit
Modifications :	Unmodified

Products Images



Western blot analysis of lysates from SW480 cells, primary antibody was diluted at 1:1000, 4° over night