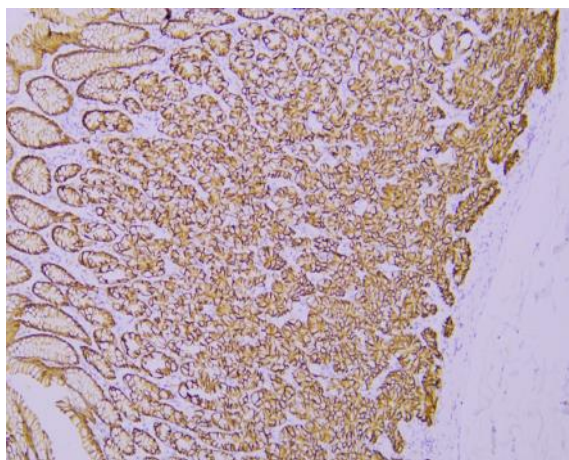


Claudin 18 (ABT185R) rabbit mAb

Catalog No :	YM7264
Reactivity :	Human;
Applications :	IHC; ELISA
Target :	Claudin 18
Fields :	>>Cell adhesion molecules;>>Tight junction;>>Leukocyte transendothelial migration;>>Pathogenic Escherichia coli infection;>>Hepatitis C
Gene Name :	CLDN18
Protein Name :	Claudin 18
Human Gene Id :	51208
Human Swiss Prot No :	P56856
Immunogen :	Synthesized peptide derived from human Claudin 18 AA range:150-261
Specificity :	This antibody detects endogenous levels of Claudin 18
Formulation :	PBS, 50% glycerol, 0.05% Proclin 300, 0.05%BSA
Source :	Monoclonal, Rabbit IgG1, Kappa
Dilution :	IHC 1:100-500, ELISA 1:5000-20000
Purification :	Recombinant Expression and Affinity purified
Storage Stability :	-15°C to -25°C/1 year(Do not lower than -25°C)
Function :	function:Plays a major role in tight junction-specific obliteration of the intercellular space, through calcium-independent cell-adhesion activity.,similarity:Belongs to the claudin family.,tissue specificity:Concentrated at the cell-cell borders of epithelial cells.,

Subcellular Location :	Cell junction, tight junction . Cell membrane ; Multi-pass membrane protein . Localizes to tight junctions in epithelial cells. .
Expression :	Isoform A1: Expression is restricted to the lung (PubMed:19047087). Isoform A2: Expression is restricted to the stomach mucosa where it is predominantly observed in the epithelial cells of the pit region and the base of the gastric glands including exocrine and endocrine cells (at protein level) (PubMed:19047087).
Tag :	recombinant
Sort :	4087
No4 :	1
Host :	Rabbit
Modifications :	Unmodified

Products Images



Immunohistochemical analysis of paraffin-embedded human Stomach. 1, Antibody was incubated at 4° overnight. 2, Citrate buffer of pH6.0 was used for antigen retrieval. 3, Secondary antibody was diluted at 1:200(room temperature, 30min).