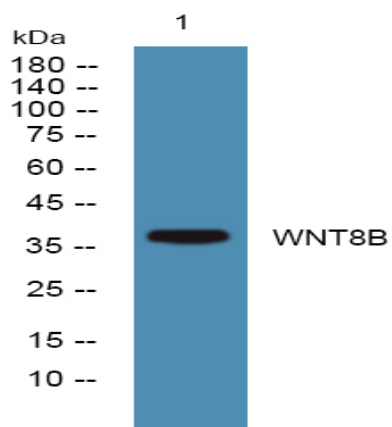


WNT8B Polyclonal Antibody

| | |
|------------------------------|---|
| Catalog No : | YN1674 |
| Reactivity : | Human;Mouse |
| Applications : | WB;ELISA |
| Target : | WNT8B |
| Fields : | >>mTOR signaling pathway;>>Wnt signaling pathway;>>Hippo signaling pathway;>>Signaling pathways regulating pluripotency of stem cells;>>Melanogenesis;>>Cushing syndrome;>>Alzheimer disease;>>Pathways of neurodegeneration - multiple diseases;>>Human papillomavirus infection;>>Pathways in cancer;>>Proteoglycans in cancer;>>Basal cell carcinoma;>>Breast cancer;>>Hepatocellular carcinoma;>>Gastric cancer |
| Gene Name : | WNT8B |
| Protein Name : | Protein Wnt-8b |
| Human Gene Id : | 7479 |
| Human Swiss Prot No : | Q93098 |
| Mouse Swiss Prot No : | Q9WUD6 |
| Immunogen : | Synthesized peptide derived from part region of human protein |
| Specificity : | WNT8B Polyclonal Antibody detects endogenous levels of protein. |
| Formulation : | Liquid in PBS containing 50% glycerol, and 0.02% sodium azide. |
| Source : | Polyclonal, Rabbit,IgG |
| Dilution : | WB 1:500-2000 ELISA 1:5000-20000 |
| Purification : | The antibody was affinity-purified from rabbit antiserum by affinity-chromatography using epitope-specific immunogen. |

| | |
|-------------------------------|--|
| Concentration : | 1 mg/ml |
| Storage Stability : | -15°C to -25°C/1 year(Do not lower than -25°C) |
| Observed Band : | 38kD |
| Cell Pathway : | WNT;WNT-T CELLHedgehog;Melanogenesis;Pathways in cancer;Basal cell carcinoma; |
| Background : | <p>The WNT gene family consists of structurally related genes which encode secreted signaling proteins. These proteins have been implicated in oncogenesis and in several developmental processes, including regulation of cell fate and patterning during embryogenesis. This gene is a member of the WNT gene family. It encodes a protein which shows 95%, 86% and 71% amino acid identity to the mouse, zebrafish and Xenopus Wnt8B proteins, respectively. The expression patterns of the human and mouse genes appear identical and are restricted to the developing brain. The chromosomal location of this gene to 10q24 suggests it as a candidate gene for partial epilepsy. [provided by RefSeq, Jul 2008],</p> |
| Function : | <p>function:Ligand for members of the frizzled family of seven transmembrane receptors. May play an important role in the development and differentiation of certain forebrain structures, notably the hippocampus.,similarity:Belongs to the Wnt family.,tissue specificity:Expression is restricted to the brain, and more specifically to the forebrain.,</p> |
| Subcellular Location : | Secreted, extracellular space, extracellular matrix. |
| Expression : | Expression is restricted to the brain, and more specifically to the forebrain. |
| Sort : | 24324 |
| No4 : | 1 |
| Host : | Rabbit |
| Modifications : | Unmodified |

Products Images



Western blot analysis of lysates from HCT116 cells, primary antibody was diluted at 1:1000, 4° over night