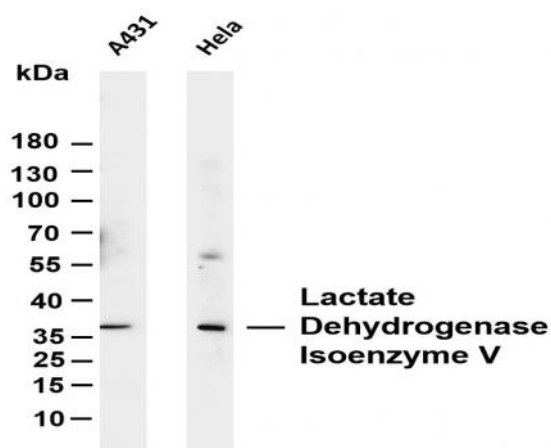


Lactate Dehydrogenase Isoenzyme V (PT0096R) PT® Rabbit mAb

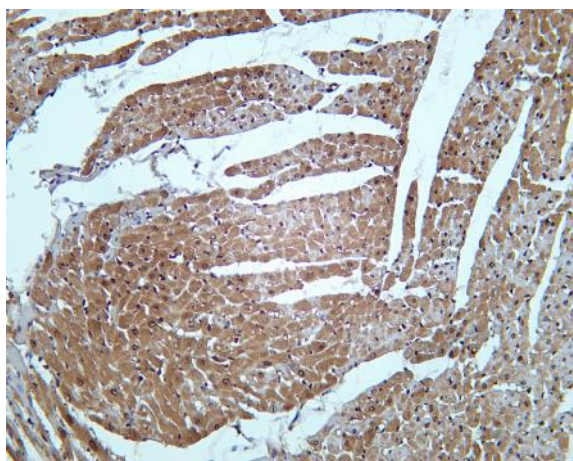
Catalog No :	YM8056
Reactivity :	Human; Mouse; Rat;
Applications :	WB;IHC;IF;IP;ELISA
Target :	LDHA
Fields :	>>Glycolysis / Gluconeogenesis;>>Cysteine and methionine metabolism;>>Pyruvate metabolism;>>Propanoate metabolism;>>Metabolic pathways;>>HIF-1 signaling pathway;>>Glucagon signaling pathway;>>Central carbon metabolism in cancer
Gene Name :	LDHA PIG19
Protein Name :	L-lactate dehydrogenase A chain (LDH-A) (EC 1.1.1.27) (Cell proliferation-inducing gene 19 protein) (LDH muscle subunit) (LDH-M) (Renal carcinoma antigen NY-REN-59)
Human Gene Id :	3939
Human Swiss Prot No :	P00338
Mouse Swiss Prot No :	P06151
Rat Swiss Prot No :	P04642
Specificity :	endogenous
Formulation :	PBS, 50% glycerol, 0.05% Proclin 300, 0.05%BSA
Source :	Monoclonal, rabbit, IgG, Kappa
Dilution :	IHC 1:200-1000,WB 1:500-200,IF 1:200-1000,ELISA 1:5000-20000,IP 1:50-200
Purification :	Protein A

Storage Stability :	-15°C to -25°C/1 year(Do not lower than -25°C)
Molecularweight :	36kD
Observed Band :	36kD
Cell Pathway :	Glycolysis / Gluconeogenesis;Cysteine and methionine metabolism;Pyruvate metabolism;Propanoate metabolism;
Background :	The protein encoded by this gene catalyzes the conversion of L-lactate and NAD to pyruvate and NADH in the final step of anaerobic glycolysis. The protein is found predominantly in muscle tissue and belongs to the lactate dehydrogenase family. Mutations in this gene have been linked to exertional myoglobinuria. Multiple transcript variants encoding different isoforms have been found for this gene. The human genome contains several non-transcribed pseudogenes of this gene. [provided by RefSeq, Sep 2008],
Function :	catalytic activity:(S)-lactate + NAD(+) = pyruvate + NADH.,caution:The sequence shown here is derived from an Ensembl automatic analysis pipeline and should be considered as preliminary data.,disease:Defects in LDHA are a cause of exertional myoglobinuria.,online information:Lactate dehydrogenase entry,pathway:Fermentation; pyruvate fermentation to lactate; (S)-lactate from pyruvate: step 1/1.,similarity:Belongs to the LDH/MDH superfamily.,similarity:Belongs to the LDH/MDH superfamily. LDH family.,subunit:Homotetramer.,
Subcellular Location :	Cytoplasm
Expression :	Predominantly expressed in anaerobic tissues such as skeletal muscle and liver.
Tag :	hot,recombinant
Sort :	1
No4 :	1
Host :	Rabbit
Modifications :	Unmodified

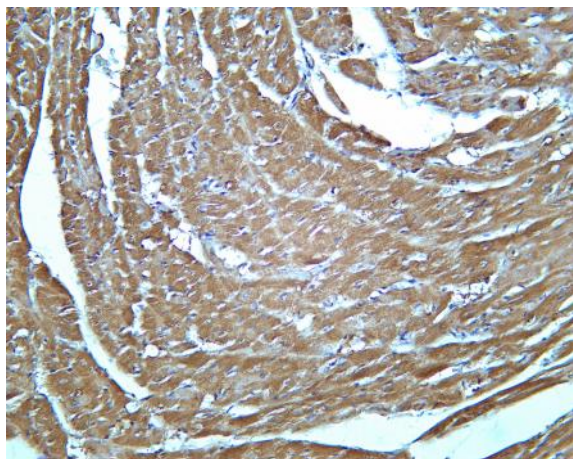
Products Images



Various whole cell lysates were separated by 4-20% SDS-PAGE, and the membrane was blotted with anti-Lactate Dehydrogenase Isoenzyme V (PT0096R) antibody. The HRP-conjugated Goat anti-Rabbit IgG(H + L) antibody was used to detect the antibody. Lane 1: A431 Lane 2: HeLa Predicted band size: 36kDa Observed band size: 36kDa



Rat heart was stained with Anti-Lactate Dehydrogenase Isoenzyme V (PT0096R) rabbit antibody



Mouse heart was stained with Anti-Lactate Dehydrogenase Isoenzyme V (PT0096R) rabbit antibody