

**CD105(Endoglin) (ABT123R) rabbit mAb**

<b>Catalog No :</b>	YM7251
<b>Reactivity :</b>	Human;
<b>Applications :</b>	IHC;WB; ELISA
<b>Target :</b>	CD105(Endoglin)
<b>Gene Name :</b>	ENG
<b>Protein Name :</b>	CD105(Endoglin)
<b>Human Gene Id :</b>	3662
<b>Human Swiss Prot No :</b>	P17813
<b>Immunogen :</b>	Synthesized peptide derived from human CD105 AA range:400-500
<b>Specificity :</b>	This antibody detects endogenous levels of CD105(Endoglin)
<b>Formulation :</b>	PBS, 50% glycerol, 0.05% Proclin 300, 0.05%BSA
<b>Source :</b>	Monoclonal, Rabbit IgG1, Kappa
<b>Dilution :</b>	IHC 1:100-500, WB 1:500-1000, ELISA 1:5000-20000
<b>Purification :</b>	Recombinant Expression and Affinity purified
<b>Storage Stability :</b>	-15°C to -25°C/1 year(Do not lower than -25°C)
<b>Molecularweight :</b>	71kD
<b>Function :</b>	disease:Defects in ENG are the cause of hereditary hemorrhagic telangiectasia type 1 (HHT1) [MIM:187300, 108010]; also known as Osler-Rendu-Weber syndrome 1 (ORW1). HHT1 is an autosomal dominant multisystemic vascular dysplasia, characterized by recurrent epistaxis, muco-cutaneous telangiectases, gastro-intestinal hemorrhage, and pulmonary (PAVM), cerebral (CAVM) and hepatic arteriovenous malformations; all secondary manifestations of the

underlying vascular dysplasia. Although the first symptom of HHT1 in children is generally nose bleed, there is an important clinical heterogeneity.,function:Major glycoprotein of vascular endothelium. May play a critical role in the binding of endothelial cells to integrins and/or other RGD receptors.,subunit:Homodimer that forms a heteromeric complex with the signaling receptors for transforming growth factor-beta: TGF-beta receptors I and/or II. It

**Subcellular Location :**

Cell membrane ; Single-pass type I membrane protein .

**Expression :**

Detected on umbilical vein endothelial cells (PubMed:10625079). Detected in placenta (at protein level) (PubMed:1692830). Detected on endothelial cells (PubMed:1692830).

**Tag :**

recombinant

**Sort :**

3360

**No4 :**

1

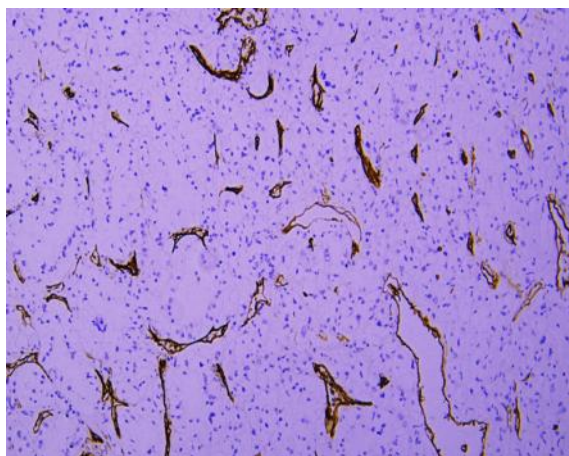
**Host :**

Rabbit

**Modifications :**

Unmodified

## Products Images



Immunohistochemical analysis of paraffin-embedded human Renal clear cell carcinoma. 1, Antibody was incubated at 4° overnight. 2, TRIS-EDTA of pH8.0 was used for antigen retrieval. 3,Secondary antibody was diluted at 1:200(room temperature, 30min).