

**IL18 (PT0148R) PT® Rabbit mAb**

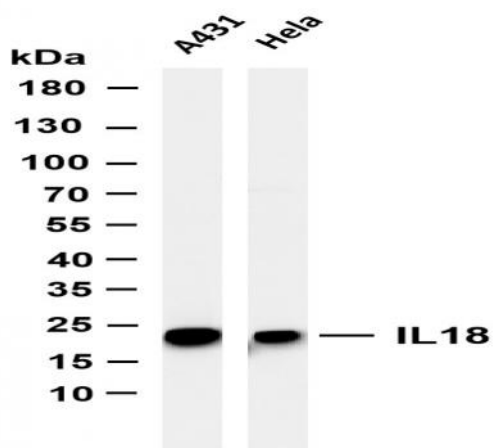
<b>Catalog No :</b>	YM8085
<b>Reactivity :</b>	Human;
<b>Applications :</b>	WB;IHC;IF;IP;ELISA
<b>Target :</b>	IL18
<b>Fields :</b>	>>Cytokine-cytokine receptor interaction;>>Viral protein interaction with cytokine and cytokine receptor;>>NOD-like receptor signaling pathway;>>Cytosolic DNA-sensing pathway;>>Pathogenic Escherichia coli infection;>>Shigellosis;>>Salmonella infection;>>Legionellosis;>>Yersinia infection;>>African trypanosomiasis;>>Malaria;>>Tuberculosis;>>Influenza A;>>Inflammatory bowel disease;>>Rheumatoid arthritis;>>Lipid and atherosclerosis
<b>Gene Name :</b>	IL18 IGIF IL1F4
<b>Protein Name :</b>	Interleukin-18 (IL-18) (Ibictadekin) (Interferon gamma-inducing factor) (IFN-gamma-inducing factor) (Interleukin-1 gamma) (IL-1 gamma)
<b>Human Gene Id :</b>	3606
<b>Human Swiss Prot No :</b>	Q14116
<b>Mouse Swiss Prot No :</b>	P70380
<b>Rat Swiss Prot No :</b>	P97636
<b>Specificity :</b>	endogenous
<b>Formulation :</b>	PBS, 50% glycerol, 0.05% Proclin 300, 0.05%BSA
<b>Source :</b>	Monoclonal, rabbit, IgG, Kappa
<b>Dilution :</b>	IHC 1:200-1000,WB 1:1000-5000,IF 1:200-1000,ELISA 1:5000-20000,IP 1:50-200  Protein A

---

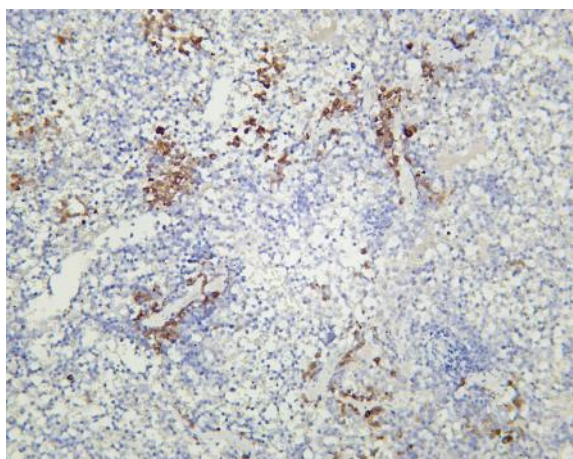
<b>Storage Stability :</b>	-15°C to -25°C/1 year(Do not lower than -25°C)
<b>Molecularweight :</b>	22kD
<b>Observed Band :</b>	22kD
<b>Cell Pathway :</b>	Cytokine-cytokine receptor interaction;NOD-like receptor;Cytosolic DNA-sensing pathway;
<b>Background :</b>	The protein encoded by this gene is a proinflammatory cytokine that augments natural killer cell activity in spleen cells, and stimulates interferon gamma production in T-helper type I cells. Alternatively spliced transcript variants encoding different isoforms have been found for this gene.[provided by RefSeq, Aug 2011],
<b>Function :</b>	function:Augments natural killer cell activity in spleen cells and stimulates interferon gamma production in T-helper type I cells.,online information:Interleukin-1 entry,similarity:Belongs to the IL-1 family.,
<b>Subcellular Location :</b>	Cytoplasm
<b>Expression :</b>	Liver,Peripheral blood,Urinary bladder,
<b>Tag :</b>	hot,recombinant
<b>Sort :</b>	1
<b>No3 :</b>	ab243091
<b>No4 :</b>	1
<b>Host :</b>	Rabbit
<b>Modifications :</b>	Unmodified

---

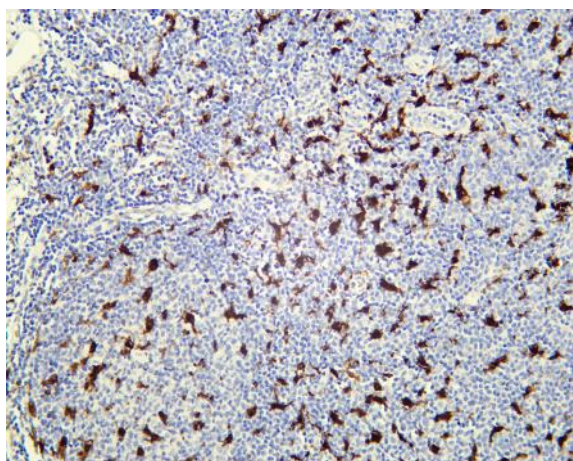
## Products Images



Various whole cell lysates were separated by 4-20% SDS-PAGE, and the membrane was blotted with anti-IL18 (PT0148R) antibody. The HRP-conjugated Goat anti-Rabbit IgG(H + L) antibody was used to detect the antibody. Lane 1: A431 Lane 2: HeLa Predicted band size: 22kDa Observed band size: 22kDa



Mouse spleen was stained with Anti-IL18 (PT0148R) rabbit antibody



Human tonsil was stained with Anti-IL18 (PT0148R) rabbit antibody