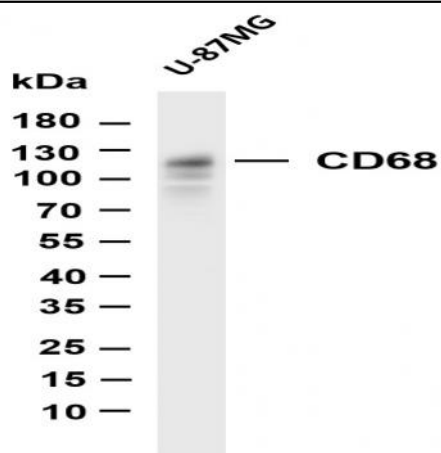


CD68 (PT0098R) PT® Rabbit mAb

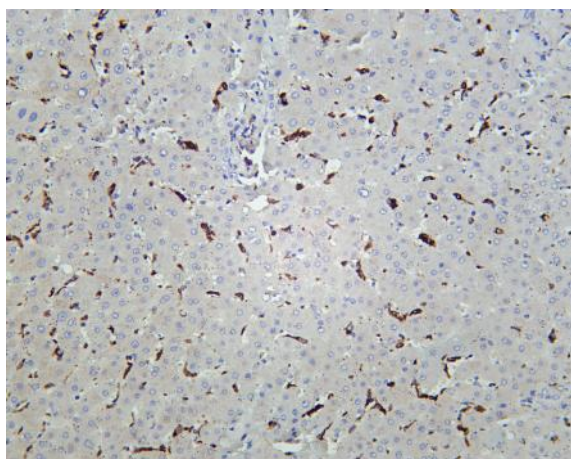
Catalog No :	YM8057
Reactivity :	Human;
Applications :	WB;IHC;IF;IP;ELISA
Target :	CD68
Fields :	>>Lysosome
Gene Name :	CD68
Protein Name :	Macrosialin (Gp110) (CD antigen CD68)
Human Gene Id :	968
Human Swiss Prot No :	P34810
Specificity :	endogenous
Formulation :	PBS, 50% glycerol, 0.05% Proclin 300, 0.05%BSA
Source :	Monoclonal, rabbit, IgG, Kappa
Dilution :	IHC 1:1000-5000,WB 1:1000-5000,IF 1:200-1000,ELISA 1:5000-20000,IP 1:50-200
Purification :	Protein A
Storage Stability :	-15°C to -25°C/1 year(Do not lower than -25°C)
Molecularweight :	35kD
Observed Band :	120kD
Cell Pathway :	Lysosome;

Background :	<p>This gene encodes a 110-kD transmembrane glycoprotein that is highly expressed by human monocytes and tissue macrophages. It is a member of the lysosomal/endosomal-associated membrane glycoprotein (LAMP) family. The protein primarily localizes to lysosomes and endosomes with a smaller fraction circulating to the cell surface. It is a type I integral membrane protein with a heavily glycosylated extracellular domain and binds to tissue- and organ-specific lectins or selectins. The protein is also a member of the scavenger receptor family. Scavenger receptors typically function to clear cellular debris, promote phagocytosis, and mediate the recruitment and activation of macrophages. Alternative splicing results in multiple transcripts encoding different isoforms. [provided by RefSeq, Jul 2008],</p>
Function :	<p>function:Could play a role in phagocytic activities of tissue macrophages, both in intracellular lysosomal metabolism and extracellular cell-cell and cell-pathogen interactions. Bind to tissue- and organ-specific lectins or selectins, allowing homing of macrophage subsets to particular sites. Rapid recirculation of CD68 from endosomes, lysosomes to the plasma membrane may allow macrophages to crawl over selectin bearing substrates or other cells.,PTM:N- and O-glycosylated.,similarity:Belongs to the LAMP family.,tissue specificity:Highly expressed by blood monocytes and tissue macrophages. Also expressed in many tumor cell lines which could allow them to attach to selectins on vascular endothelium, facilitating their dissemination to secondary sites.,</p>
Subcellular Location :	<p>Membranous</p>
Expression :	<p>Highly expressed by blood monocytes and tissue macrophages. Also expressed in lymphocytes, fibroblasts and endothelial cells. Expressed in many tumor cell lines which could allow them to attach to selectins on vascular endothelium, facilitating their dissemination to secondary sites.</p>
Tag :	<p>hot,recombinant</p>
Sort :	<p>1</p>
No4 :	<p>1</p>
Host :	<p>Rabbit</p>
Modifications :	<p>Unmodified</p>

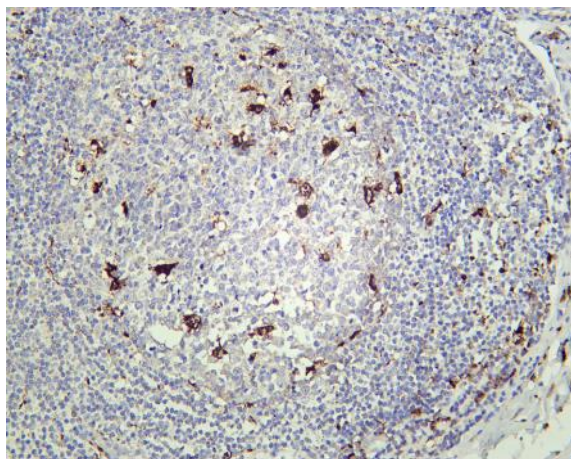
Products Images



Various whole cell lysates were separated by 4-20% SDS-PAGE, and the membrane was blotted with anti-CD68 (PT0098R) antibody. The HRP-conjugated Goat anti-Rabbit IgG(H + L) antibody was used to detect the antibody. Lane 1: U-87MG
Predicted band size: 35kDa Observed band size: 120kDa



Human liver was stained with Anti-CD68 (PT0098R) rabbit antibody



Human appendix was stained with Anti-CD68 (PT0098R) rabbit antibody