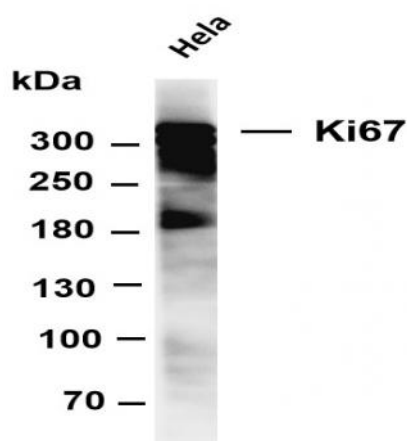


**Ki67 (PT0321R) PT® Rabbit mAb**

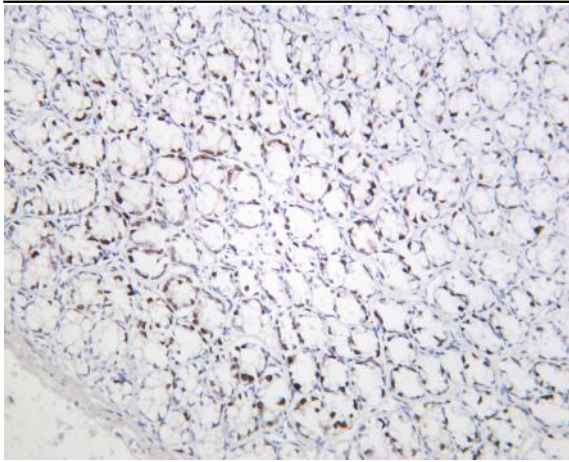
<b>Catalog No :</b>	YM8189
<b>Reactivity :</b>	Human; Mouse; Rat;
<b>Applications :</b>	WB;IHC;IF;IP;ELISA
<b>Target :</b>	Ki-67
<b>Gene Name :</b>	MKI67
<b>Protein Name :</b>	Ki 67
<b>Human Gene Id :</b>	4288
<b>Human Swiss Prot No :</b>	P46013
<b>Specificity :</b>	endogenous
<b>Formulation :</b>	PBS, 50% glycerol, 0.05% Proclin 300, 0.05%BSA
<b>Source :</b>	Monoclonal, rabbit, IgG, Kappa
<b>Dilution :</b>	IHC 1:200-1000,WB 1:1000-5000,IF 1:200-1000,ELISA 1:5000-20000,IP 1:50-200
<b>Purification :</b>	Protein A
<b>Storage Stability :</b>	-15°C to -25°C/1 year(Do not lower than -25°C)
<b>Molecularweight :</b>	359kD
<b>Observed Band :</b>	359kD
<b>Background :</b>	This gene encodes a nuclear protein that is associated with and may be necessary for cellular proliferation. Alternatively spliced transcript variants have been described. A related pseudogene exists on chromosome X. [provided by RefSeq, Mar 2009],

<b>Function :</b>	developmental stage:Expression of this antigen occurs preferentially during late G1, S, G2 and M phases of the cell cycle, while in cells in G0 phase the antigen cannot be detected.,function:Thought to be required for maintaining cell proliferation.,online information:Ki-67 entry,similarity:Contains 1 FHA domain.,subcellular location:Predominantly localized in the G1 phase in the perinucleolar region, in the later phases it is also detected throughout the nuclear interior, being predominantly localized in the nuclear matrix. In mitosis, it is present on all chromosomes.,subunit:Interacts with KIF15. Binds through the FHA domain to MKI67IP.,
<b>Subcellular Location :</b>	Nucleus
<b>Expression :</b>	Nuclear
<b>Tag :</b>	hot,recombinant
<b>Sort :</b>	1
<b>No1 :</b>	ab15580
<b>No3 :</b>	ab15580
<b>No4 :</b>	1
<b>Host :</b>	Rabbit
<b>Modifications :</b>	Unmodified

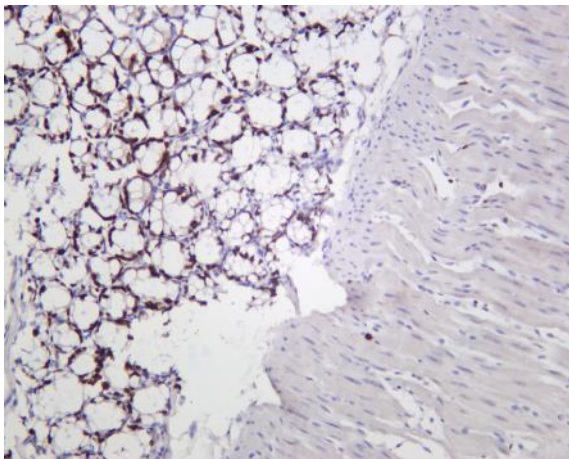
## Products Images



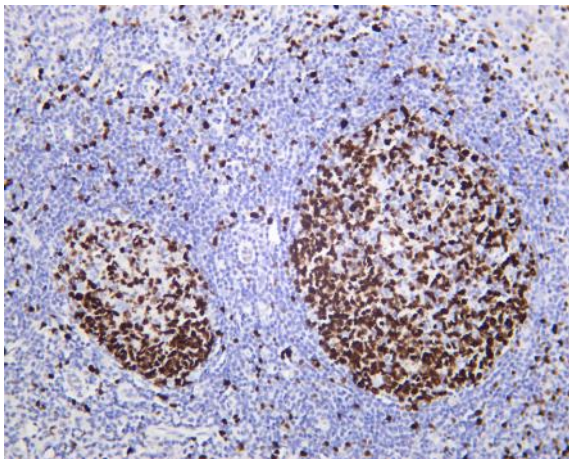
Various whole cell lysates were separated by 4-8% SDS-PAGE, and the membrane was blotted with anti-Ki67 (PT0321R) antibody. The HRP-conjugated Goat anti-Rabbit IgG(H + L) antibody was used to detect the antibody. Lane 1: HeLa Predicted band size: 359kDa Observed band size: 359kDa



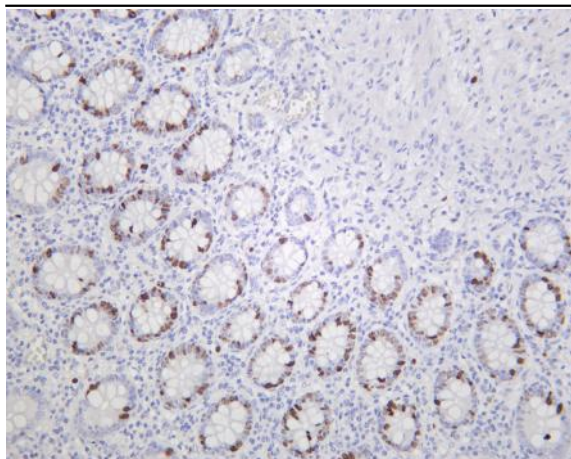
Rat colon was stained with Anti-Ki67 (PT0321R) rabbit antibody



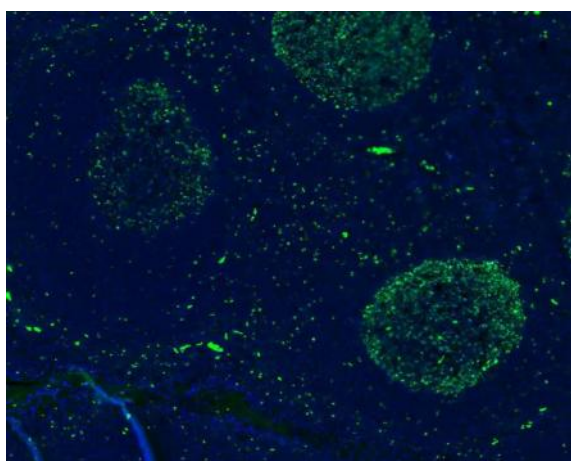
Mouse colon was stained with Anti-Ki67 (PT0321R) rabbit antibody



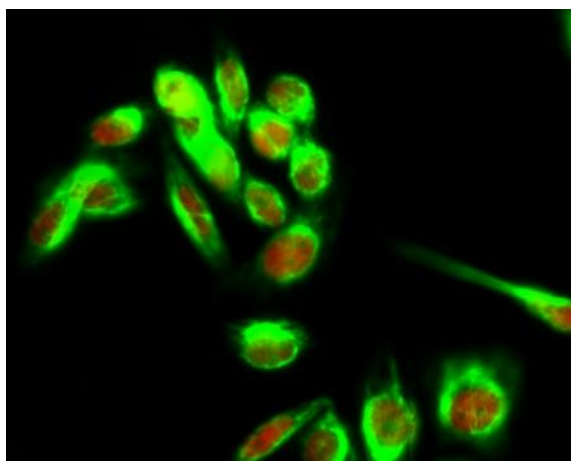
Human tonsil was stained with Anti-Ki67 (PT0321R) rabbit antibody



Human appendix was stained with Anti-Ki67 (PT0321R) rabbit antibody



Human tonsil tissue was stained with Anti-Ki67 (PT0321R) Antibody (green)



Immunofluorescence analysis of HeLa cell. 1, Ki-67 Antibody (red) was diluted at 1:200 (4° overnight). HSP70 Monoclonal Antibody (3G10) (green) was diluted at 1:200 (4° overnight). 2, Goat Anti Rabbit Alexa Fluor 594 Catalog: RS3611 was diluted at 1:1000 (room temperature, 50min). Goat Anti Mouse Alexa Fluor 488 Catalog: RS3208 was diluted at 1:1000 (room temperature, 50min).