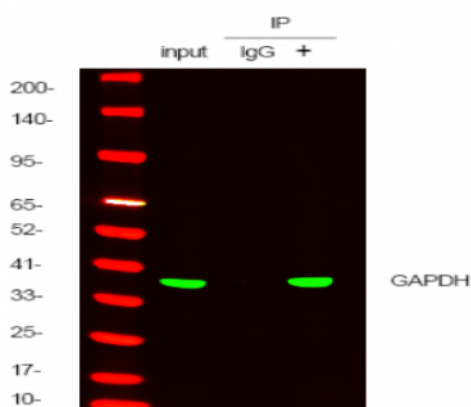


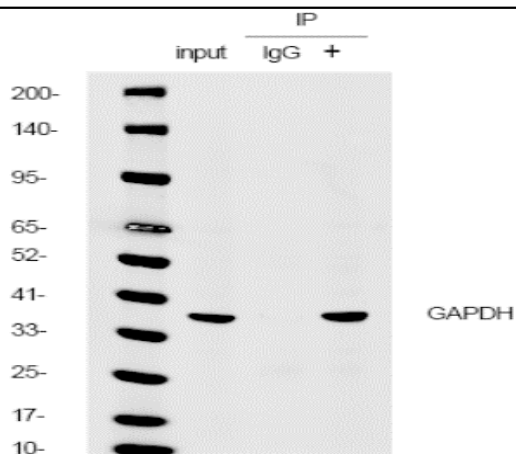
## Nanoantibody anti Mouse for IP AbFluor 800

<b>Catalog No :</b>	RS0091
<b>Reactivity :</b>	Mouse
<b>Applications :</b>	WB;IP
<b>Target :</b>	Mouse IgG1/2a/2b/3 Kappa
<b>Specificity :</b>	This antibody is immunoblotting reagents that enable the trouble-free detection of immunoblotted target protein bands, without interference from denatured IgG. This allows to detect the (co-)immunopre
<b>Source :</b>	Camel,VHH
<b>Dilution :</b>	WB/IP 5000-20000
<b>Storage Stability :</b>	2°C to 8°C/1 year
<b>No4 :</b>	1

## Products Images



Immunoprecipitating GAPDH in HeLa whole cell lysate with mouse anti GAPDH antibody(Catalog YM3029). Western blot was performed on the immunoprecipitate using anti-GAPDH antibody at 1:5000 dilution, and followed by the AbFluor 800 labeled anti-Mouse IgG antibody at 1:5000 dilution. Lane 1 (Input): 20ug HeLa whole cell lysate. Lane 2 (-):Mouse monoclonal IgG1 Isotype Control(Catalog VN0001, ) instead of GAPDH antibody in HeLa whole cell lysate. Lane 3 (+): 6ug GAPDH antibody IP in 1000ug HeLa whole cell lysate



Immunoprecipitating GAPDH in HeLa whole cell lysate with mouse anti GAPDH antibody(Catalog YM3029). Western blot was performed on the immunoprecipitate using anti-GAPDH antibody at 1:5000 dilution, and followed by the AbFlour 800 labeled anti-Mouse IgG antibody at 1:5000 dilution. Lane 1 (Input): 20ug HeLa whole cell lysate. Lane 2 (-):Mouse monoclonal IgG1 Isotype Control(Catalog VN0001, ) instead of GAPDH antibody in HeLa whole cell lysate. Lane 3 (+): 6ug GAPDH antibody IP in 1000ug HeLa whole cell lysate