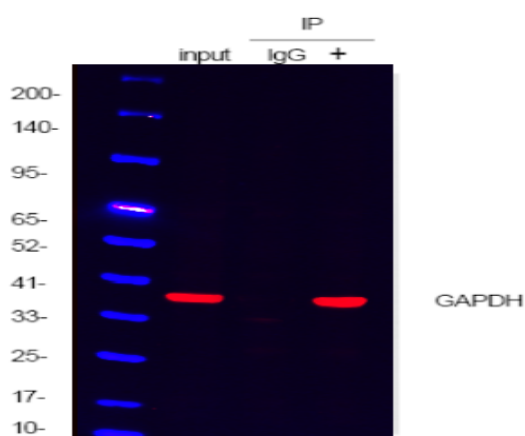


## Nanoantibody anti Mouse for IP AbFluor 680

<b>Catalog No :</b>	RS0090
<b>Reactivity :</b>	Mouse
<b>Applications :</b>	WB;IP
<b>Target :</b>	Mouse IgG1/2a/2b/3 Kappa
<b>Specificity :</b>	This antibody is immunoblotting reagents that enable the trouble-free detection of immunoblotted target protein bands, without interference from denatured IgG. This allows to detect the (co-)immunopre
<b>Source :</b>	Camel,VHH
<b>Dilution :</b>	WB/IP 5000-20000
<b>Storage Stability :</b>	2°C to 8°C/1 year
<b>No4 :</b>	1

## Products Images



Immunoprecipitating GAPDH in HeLa whole cell lysate with mouse anti GAPDH antibody(Catalog YM3029). Western blot was performed on the immunoprecipitate using anti-GAPDH antibody at 1:5000 dilution, and followed by the AbFluor 680 labeled anti-Mouse IgG antibody at 1:5000 dilution. Lane 1 (Input): 20ug HeLa whole cell lysate. Lane 2 (-):Mouse monoclonal IgG1 Isotype Control(Catalog VN0001, ) instead of GAPDH antibody in HeLa whole cell lysate. Lane 3 (+): 6ug GAPDH antibody IP in 1000ug HeLa whole cell lysate