

carcinoembryonic antigen (ABT-CEA) mouse mAb

Catalog No :	YM6026
Reactivity :	Human;
Applications :	IHC;IF;ELISA
Target :	CEA
Gene Name :	CEACAM5 CEA
Protein Name :	Carcinoembryonic antigen-related cell adhesion molecule 5 (Carcinoembryonic antigen) (CEA) (Meconium antigen 100) (CD antigen CD66e)
Human Gene Id :	1048
Human Swiss Prot No :	P06731
Immunogen :	Synthesized peptide derived from human carcinoembryonic antigen(CEA) AA range: 600-702
Specificity :	The antibody can specifically recognize human CEA protein.
Formulation :	PBS, 50% glycerol, 0.05% Proclin 300, 0.05%BSA
Source :	Mouse, Monoclonal/IgG2b, kappa
Dilution :	IHC 1:50-200. IF 1:50-200. ELISA 1:500-5000
Purification :	The antibody was affinity-purified from ascites by affinity-chromatography using specific immunogen.
Storage Stability :	-15°C to -25°C/1 year(Do not lower than -25°C)
Molecularweight :	76kD
Observed Band :	200kD
Background :	This gene encodes a cell surface glycoprotein that represents the founding

member of the carcinoembryonic antigen (CEA) family of proteins. The encoded protein is used as a clinical biomarker for gastrointestinal cancers and may promote tumor development through its role as a cell adhesion molecule. Additionally, the encoded protein may regulate differentiation, apoptosis, and cell polarity. This gene is present in a CEA family gene cluster on chromosome 19. Alternative splicing results in multiple transcript variants. [provided by RefSeq, Jul 2015],

Function :

function:Cell surface glycoprotein that plays a role in cell adhesion and in intracellular signaling. Receptor for E.coli Dr adhesins.,PTM:Complex immunoreactive glycoprotein with a MW of 180 kDa comprising 60% carbohydrate.,similarity:Belongs to the immunoglobulin superfamily. CEA family.,similarity:Contains 7 Ig-like (immunoglobulin-like) domains.,subunit:Homodimer. Binding of E.coli Dr adhesins leads to dissociation of the homodimer.,tissue specificity:Found in adenocarcinomas of endodermally derived digestive system epithelium and fetal colon.,

Subcellular Location :

Cytoplasmic

Expression :

Expressed in columnar epithelial and goblet cells of the colon (at protein level) (PubMed:10436421). Found in adenocarcinomas of endodermally derived digestive system epithelium and fetal colon.

Tag :

hot

Sort :

800

No4 :

1

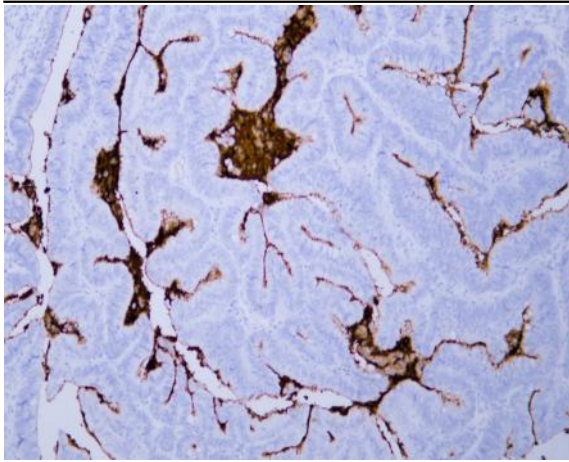
Host :

Mouse

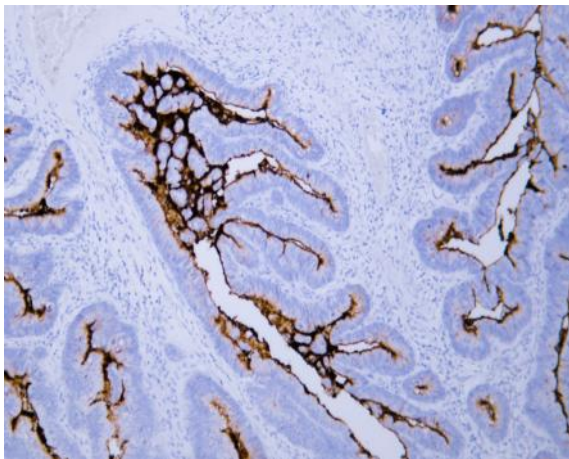
Modifications :

Unmodified

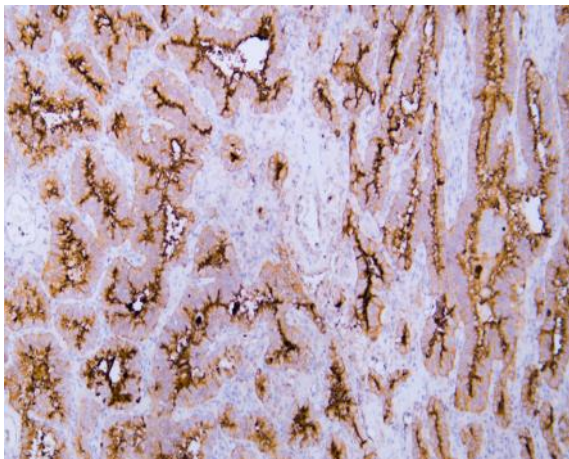
Products Images



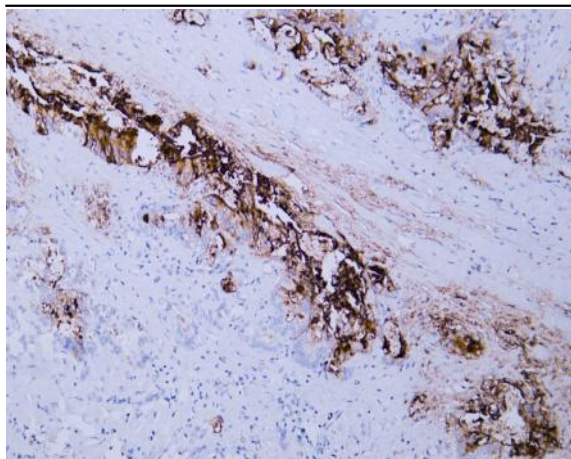
Human colon carcinoma tissue was stained with anti-CEA(ABT-CEA) antibody.



Human colon carcinoma tissue was stained with anti-CEA(ABT-CEA) antibody.



Human lung adenocarcinoma tissue was stained with anti-CEA(ABT-CEA) antibody.



Human pancreatic adenocarcinoma tissue was stained with anti-CEA(ABT-CEA) antibody.