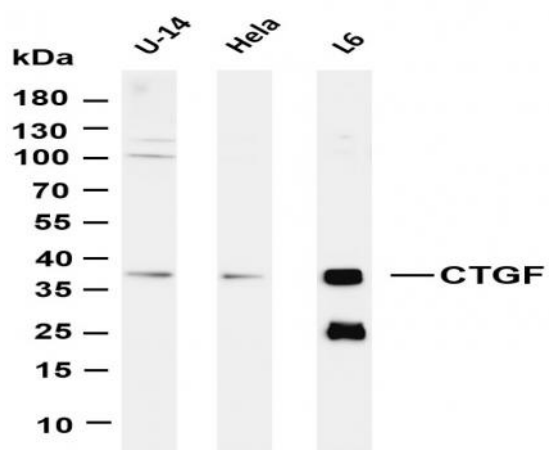


CTGF (PT0191R) PT® Rabbit mAb

Catalog No :	YM8119
Reactivity :	Human; Mouse; Rat;
Applications :	WB;IP;ELISA
Target :	CTGF
Fields :	>>Apelin signaling pathway;>>Hippo signaling pathway
Gene Name :	CTGF CCN2 HCS24 IGFBP8
Protein Name :	Connective tissue growth factor (CCN family member 2) (Hypertrophic chondrocyte-specific protein 24) (Insulin-like growth factor-binding protein 8) (IBP-8) (IGF-binding protein 8) (IGFBP-8)
Human Gene Id :	1490
Human Swiss Prot No :	P29279
Mouse Gene Id :	14219
Mouse Swiss Prot No :	P29268
Rat Swiss Prot No :	Q9R1E9
Specificity :	endogenous
Formulation :	PBS, 50% glycerol, 0.05% Proclin 300, 0.05%BSA
Source :	Monoclonal, rabbit, IgG, Kappa
Dilution :	WB 1:500-2000,ELISA 1:5000-20000,IP 1:50-200
Purification :	Protein A
Storage Stability :	-15°C to -25°C/1 year(Do not lower than -25°C)

Molecularweight :	38kD
Observed Band :	38kD
Background :	<p>The protein encoded by this gene is a mitogen that is secreted by vascular endothelial cells. The encoded protein plays a role in chondrocyte proliferation and differentiation, cell adhesion in many cell types, and is related to platelet-derived growth factor. Certain polymorphisms in this gene have been linked with a higher incidence of systemic sclerosis. [provided by RefSeq, Nov 2009],</p>
Function :	<p>function:Major connective tissue mitogen secreted by vascular endothelial cells. Promotes proliferation and differentiation of chondrocytes. Mediates heparin- and divalent cation-dependent cell adhesion in many cell types including fibroblasts, myofibroblasts, endothelial and epithelial cells. Enhances fibroblast growth factor-induced DNA synthesis.,similarity:Belongs to the CCN family.,similarity:Contains 1 CTCK (C-terminal cystine knot-like) domain.,similarity:Contains 1 IGFBP N-terminal domain.,similarity:Contains 1 TSP type-1 domain.,similarity:Contains 1 VWFC domain.,subunit:Monomer.,</p>
Subcellular Location :	Secreted
Expression :	Expressed in bone marrow and thymic cells. Also expressed one of two Wilms tumors tested.
Tag :	hot,recombinant
Sort :	4660
No1 :	ab6992
No2 :	ab6992
No4 :	1
Host :	Rabbit
Modifications :	Unmodified

Products Images



Various whole cell lysates were separated by 4-20% SDS-PAGE, and the membrane was blotted with anti-CTGF (PT0191R) antibody. The HRP-conjugated Goat anti-Rabbit IgG(H + L) antibody was used to detect the antibody. Lane 1: U-14 Lane 2: HeLa Lane 3: L6 Predicted band size: 38kDa Observed band size: 38kDa