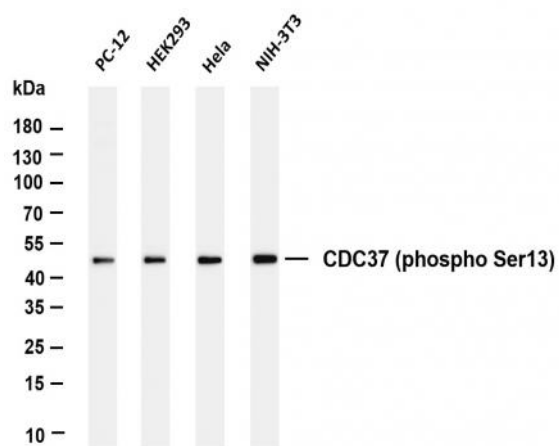


CDC37 (phospho Ser13) (PT0060R) PT® Rabbit mAb

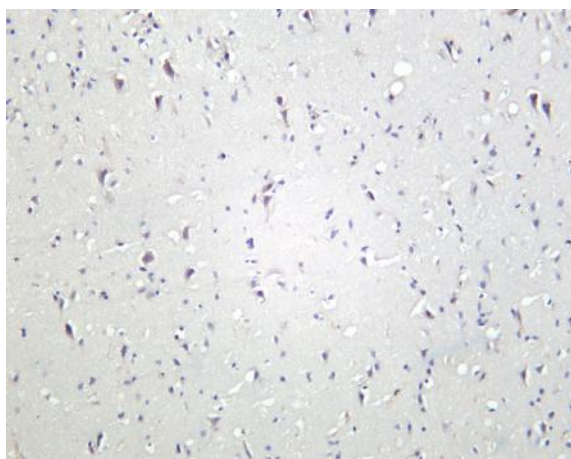
Catalog No :	YM8031
Reactivity :	Human; Mouse; Rat;
Applications :	WB;IHC;IF;IP;ELISA
Target :	Cdc37
Fields :	>>PI3K-Akt signaling pathway
Gene Name :	CDC37
Protein Name :	Hsp90 co-chaperone Cdc37
Human Gene Id :	11140
Human Swiss Prot No :	Q16543
Mouse Gene Id :	12539
Mouse Swiss Prot No :	Q61081
Rat Gene Id :	114562
Rat Swiss Prot No :	Q63692
Specificity :	endogenous
Formulation :	PBS, 50% glycerol, 0.05% Proclin 300, 0.05%BSA
Source :	Monoclonal, rabbit, IgG, Kappa
Dilution :	IHC 1:400-1000,WB 1:1000-5000,IF 1:200-1000,ELISA 1:5000-20000,IP 1:50-200
Purification :	Protein A

Storage Stability :	-15°C to -25°C/1 year(Do not lower than -25°C)
Molecularweight :	44kD
Observed Band :	44kD
Cell Pathway :	PI3K/Akt
Background :	The protein encoded by this gene is highly similar to Cdc 37, a cell division cycle control protein of <i>Sacchomyces cerevisiae</i> . This protein is a molecular chaperone with specific function in cell signal transduction. It has been shown to form complex with Hsp90 and a variety of protein kinases including CDK4, CDK6, SRC, RAF-1, MOK, as well as eIF2 alpha kinases. It is thought to play a critical role in directing Hsp90 to its target kinases. [provided by RefSeq, Jul 2008],
Function :	function:Co-chaperone that binds to numerous kinases and promotes their interaction with the Hsp90 complex, resulting in stabilization and promotion of their activity.,PTM:Constitutively sumoylated by UBE2L.,similarity:Belongs to the CDC37 family.,subunit:Forms a complex with Hsp90. Interacts with AR, CDK4, CDK6, EIF2AK1 and RB1.,
Subcellular Location :	Cytoplasm
Expression :	Lymph,Placenta,
Tag :	hot,recombinant
Sort :	3745
No4 :	1
Host :	Rabbit
Modifications :	phospho

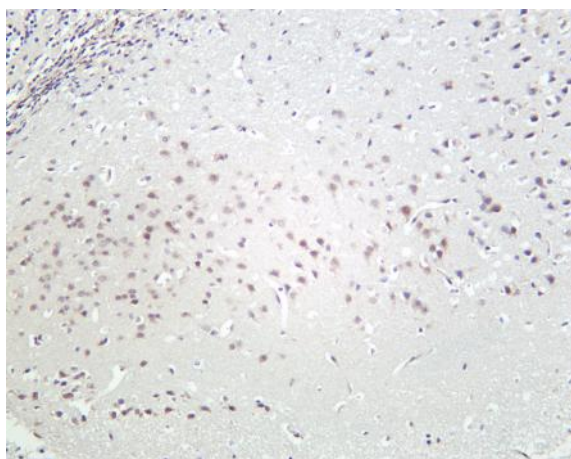
Products Images



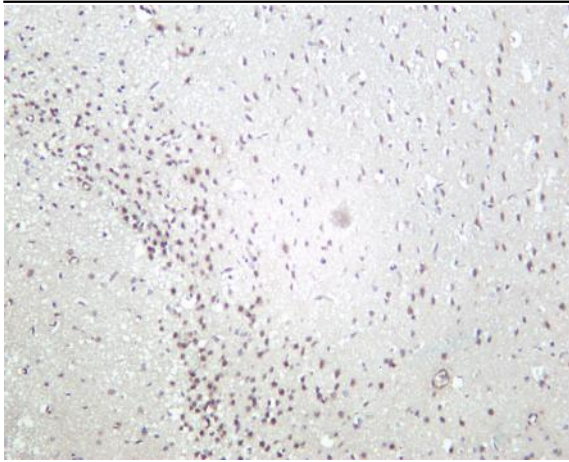
Various whole cell lysates were separated by 4-20% SDS-PAGE, and the membrane was blotted with anti-CDC37 (phospho Ser13) (PT0060R) antibody. The HRP-conjugated Goat anti-Rabbit IgG(H + L) antibody was used to detect the antibody. Lane 1: PC-12 Lane 2: HEK293 Lane 3: HeLa Lane 4: NIH-3T3 Predicted band size: 44kDa Observed band size: 44kDa



Human brain was stained with Anti-CDC37 (phospho Ser13) (PT0060R) rabbit antibody



Mouse brain was stained with Anti-CDC37 (phospho Ser13) (PT0060R) rabbit antibody



Rat brain was stained with Anti-CDC37 (phospho Ser13)
(PT0060R) rabbit antibody