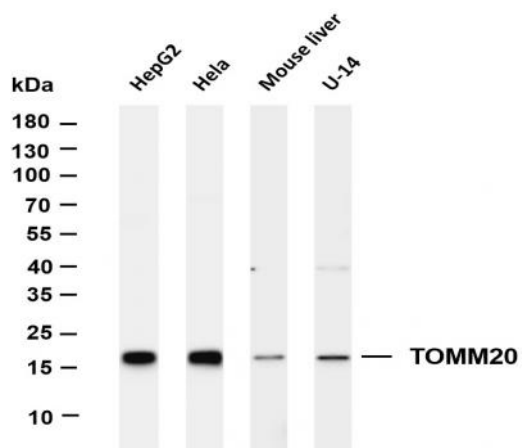


**TOMM20 (PT0287R) PT® Rabbit mAb**

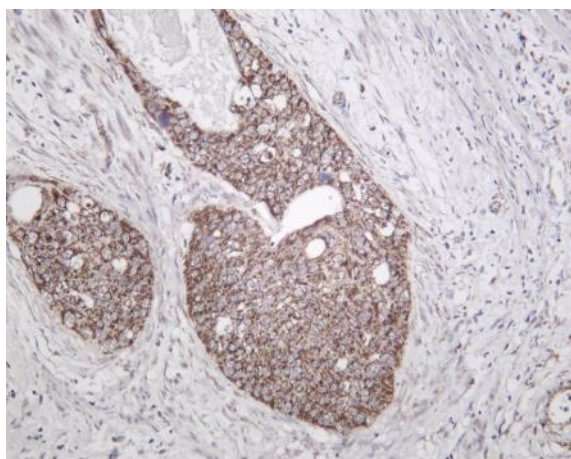
<b>Catalog No :</b>	YM8164
<b>Reactivity :</b>	Human;Mouse;Rat;
<b>Applications :</b>	WB;IHC;IF;IP;ELISA
<b>Target :</b>	Tom20
<b>Gene Name :</b>	TOMM20
<b>Protein Name :</b>	Mitochondrial import receptor subunit TOM20 homolog
<b>Human Gene Id :</b>	9804
<b>Human Swiss Prot No :</b>	Q15388
<b>Mouse Gene Id :</b>	67952
<b>Mouse Swiss Prot No :</b>	Q9DCC8
<b>Rat Gene Id :</b>	266601
<b>Rat Swiss Prot No :</b>	Q62760
<b>Specificity :</b>	endogenous
<b>Formulation :</b>	PBS, 50% glycerol, 0.05% Proclin 300, 0.05%BSA
<b>Source :</b>	Monoclonal, rabbit, IgG, Kappa
<b>Dilution :</b>	IHC 1:100-1:500,WB 1:1000-1:5000,IF 1:200-1:1000,ELISA 1:5000-1:20000,IP 1:50-1:200,
<b>Purification :</b>	Protein A
<b>Storage Stability :</b>	-15°C to -25°C/1 year(Do not lower than -25°C)

<b>Molecularweight :</b>	16kD
<b>Observed Band :</b>	16kD
<b>Background :</b>	function:Central component of the receptor complex responsible for the recognition and translocation of cytosolically synthesized mitochondrial preproteins. Together with tom22 functions as the transit peptide receptor at the surface of the mitochondrion outer membrane and facilitates the movement of preproteins into the tom40 translocation pore.,similarity:Belongs to the Tom20 family.,subunit:Forms part of the preprotein translocase complex of the outer mitochondrial membrane (TOM complex) which consists of at least 7 different proteins (TOMM5, TOMM6, TOMM7, TOMM20, TOMM22, TOMM40 and TOMM70). Interacts with TOM22.,
<b>Function :</b>	function:Central component of the receptor complex responsible for the recognition and translocation of cytosolically synthesized mitochondrial preproteins. Together with tom22 functions as the transit peptide receptor at the surface of the mitochondrion outer membrane and facilitates the movement of preproteins into the tom40 translocation pore.,similarity:Belongs to the Tom20 family.,subunit:Forms part of the preprotein translocase complex of the outer mitochondrial membrane (TOM complex) which consists of at least 7 different proteins (TOMM5, TOMM6, TOMM7, TOMM20, TOMM22, TOMM40 and TOMM70). Interacts with TOM22.,
<b>Subcellular Location :</b>	Membranous
<b>Expression :</b>	Bone marrow,Brain,Cervix,Epithelium,Eye,Fibroblast,Pancreas
<b>Tag :</b>	hot,recombinant
<b>Sort :</b>	1
<b>No3 :</b>	ab186735
<b>No4 :</b>	1
<b>Host :</b>	Rabbit
<b>Modifications :</b>	Unmodified

## Products Images



Various whole cell lysates were separated by 4-20% SDS-PAGE, and the membrane was blotted with anti-TOMM20 (PT0287R) antibody. The HRP-conjugated Goat anti-Rabbit IgG(H + L) antibody was used to detect the antibody. Lane 1: HepG2 Lane 2: HeLa Lane 3: Mouse liver Lane 4: U-14 Predicted band size: 16kDa Observed band size: 16kDa



Human cervical carcinoma was stained with Anti-TOMM20 (PT0287R) rabbit antibody