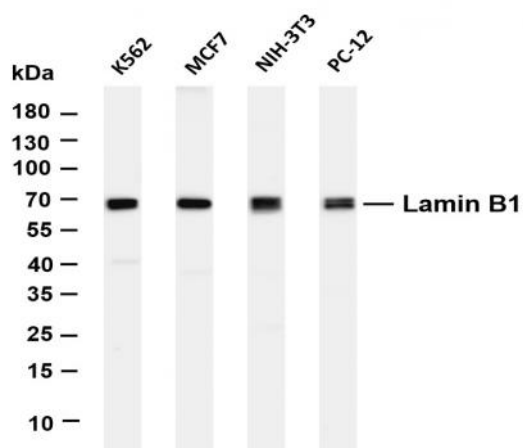


Lamin B1 (PT0286R) PT® Rabbit mAb

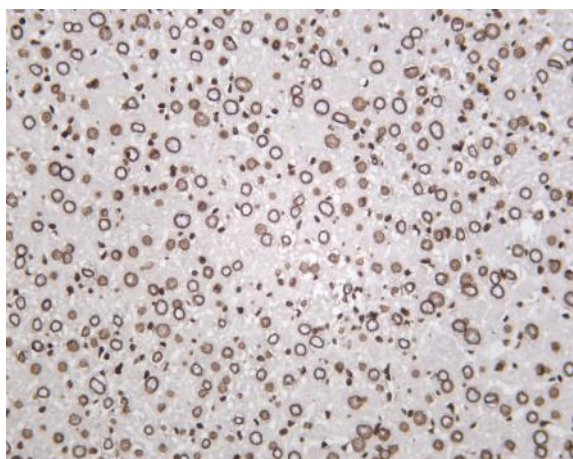
Catalog No :	YM8163
Reactivity :	Human;Mouse;Rat;
Applications :	WB;IHC;IF;IP;ELISA
Target :	Lamin B1
Fields :	>>Apoptosis
Gene Name :	LMNB1
Protein Name :	Lamin-B1
Human Gene Id :	4001
Human Swiss Prot No :	P20700
Mouse Gene Id :	16906
Mouse Swiss Prot No :	P14733
Rat Gene Id :	116685
Rat Swiss Prot No :	P70615
Specificity :	endogenous
Formulation :	PBS, 50% glycerol, 0.05% Proclin 300, 0.05%BSA
Source :	Monoclonal, rabbit, IgG, Kappa
Dilution :	IHC 1:200-1:1000,WB 1:1000-1:5000,IF 1:200-1:1000,ELISA 1:5000-1:20000,IP 1:50-1:200,
Purification :	Protein A

Storage Stability :	-15°C to -25°C/1 year(Do not lower than -25°C)
Molecularweight :	68kD
Observed Band :	68kD
Background :	lamin B1(LMNB1) Homo sapiens This gene encodes one of the two B-type lamin proteins and is a component of the nuclear lamina. A duplication of this gene is associated with autosomal dominant adult-onset leukodystrophy (ADLD). Alternative splicing results in multiple transcript variants. [provided by RefSeq, Dec 2015],
Function :	disease:Defects in LMNB1 are the cause of leukodystrophy demyelinating autosomal dominant adult-onset (ADLD) [MIM:169500]. ADLD is a slowly progressive and fatal demyelinating leukodystrophy, presenting in the fourth or fifth decade of life. Clinically characterized by early autonomic abnormalities, pyramidal and cerebellar dysfunction, and symmetric demyelination of the CNS. It differs from multiple sclerosis and other demyelinating disorders in that neuropathology shows preservation of oligodendroglia in the presence of subtotal demyelination and lack of astrogliosis.,function:Lamins are components of the nuclear lamina, a fibrous layer on the nucleoplasmic side of the inner nuclear membrane, which is thought to provide a framework for the nuclear envelope and may also interact with chromatin.,miscellaneous:The structural integrity of the lamina is strictly controlled by the cell cycle
Subcellular Location :	Nucleus
Expression :	Brain,Cajal-Retzius cell,Epithelium,Eye,Fetal brain cortex,Ovarian carcinoma,Placenta,Uterus,
Tag :	hot,recombinant
Sort :	1
No3 :	ab133741
No4 :	1
Host :	Rabbit
Modifications :	Unmodified

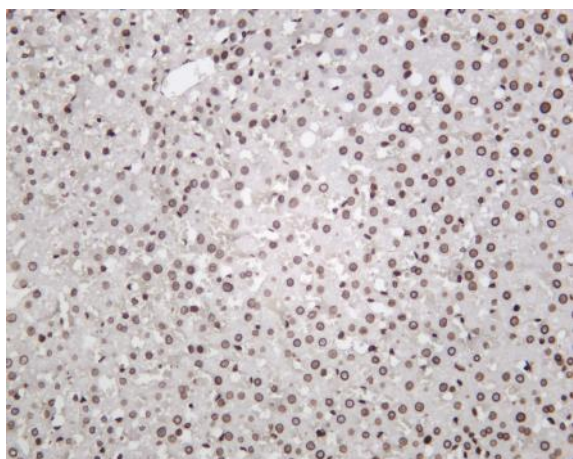
Products Images



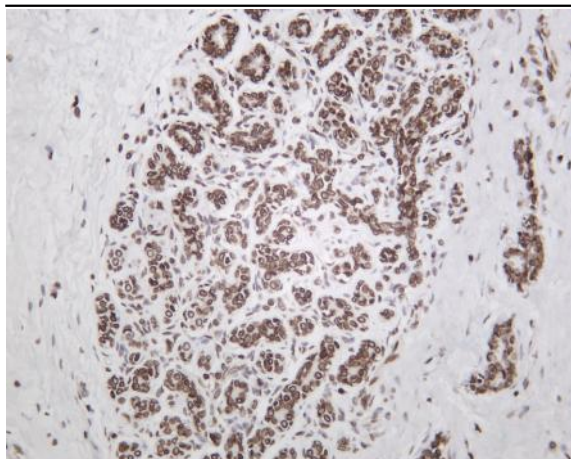
Various whole cell lysates were separated by 4-20% SDS-PAGE, and the membrane was blotted with anti-Lamin B1 (PT0286R) antibody. The HRP-conjugated Goat anti-Rabbit IgG(H + L) antibody was used to detect the antibody. Lane 1: K562 Lane 2: MCF7 Lane 3: NIH-3T3 Lane 4: PC-12 Predicted band size: 66kDa Observed band size: 68kDa



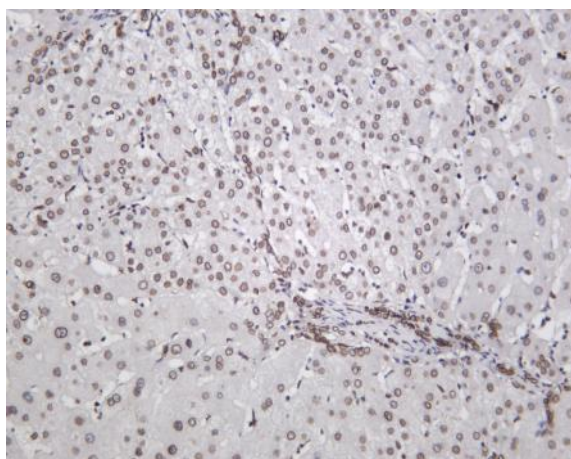
Mouse liver was stained with Anti-Lamin B1 (PT0286R) rabbit antibody



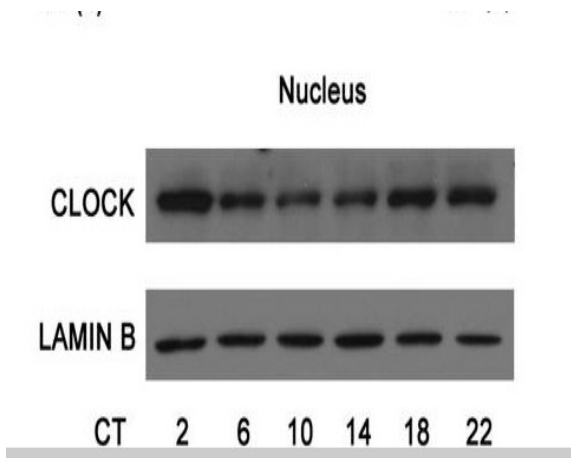
Rat liver was stained with Anti-Lamin B1 (PT0286R) rabbit antibody



Human breast carcinoma was stained with Anti-Lamin B1 (PT0286R) rabbit antibody



Human liver was stained with Anti-Lamin B1 (PT0286R) rabbit antibody



Gao, Qian, et al. "A novel role of microRNA 17-5p in the modulation of circadian rhythm." *Scientific reports* 6 (2016): 30070.