

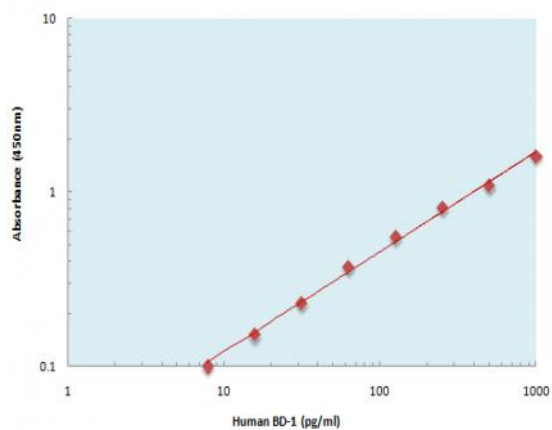
Human BD-1 ELISA Kit

Catalog No :	KE1002
Reactivity :	Human
Applications :	ELISA
Gene Name :	DEFB1
Protein Name :	Beta-defensin 1
Human Gene Id :	1672
Human Swiss Prot No :	P60022
Mouse Swiss Prot No :	P56386
Specificity :	Sample Type for Cell Culture Supernates, Cell lysates, Tissue Lysates, Serum, EDTA Plasma, Heparin Plasma
Storage Stability :	2-8°C/6 months
Detection Method :	Colorimetric
Background :	function:Has bactericidal activity.,mass spectrometry: PubMed:7628632,similarity:Belongs to the beta-defensin family.,tissue specificity:Plasma.,
Function :	chemotaxis, defense response, immune response, cell surface receptor linked signal transduction, G-protein coupled receptor protein signaling pathway, behavior, locomotory behavior, response to bacterium, taxis, defense response to bacterium, innate immune response,
Subcellular Location :	Secreted . Membrane . Associates with tumor cell membrane-derived microvesicles (PubMed:23938203). .
Expression :	Blood plasma. Sperm. Highly expressed in the lower head and midpiece of sperm. Significantly reduced levels found in the sperms of asthenozoospermia and leukocytospermia patients (at protein level).

Sort : 7991

Modifications : Unmodified

Products Images



The Human BD-1 ELISA Kit allows for the detection and quantification of endogenous levels of natural and/or recombinant Human BD-1 proteins within the range of 4-1000 pg/ml.