

## CD3 (PT0212R) PT® Rabbit mAb

<b>Catalog No :</b>	YM8134
<b>Reactivity :</b>	Human;Mouse;Rat;
<b>Applications :</b>	WB;IHC;IF;IP;ELISA
<b>Target :</b>	CD3E
<b>Fields :</b>	>>Hematopoietic cell lineage;>>Th1 and Th2 cell differentiation;>>Th17 cell differentiation;>>T cell receptor signaling pathway;>>Chagas disease;>>Measles;>>Human T-cell leukemia virus 1 infection;>>Epstein-Barr virus infection;>>Human immunodeficiency virus 1 infection;>>PD-L1 expression and PD-1 checkpoint pathway in cancer;>>Primary immunodeficiency
<b>Gene Name :</b>	CD3E T3E
<b>Protein Name :</b>	CD3, CD3E
<b>Human Gene Id :</b>	916
<b>Human Swiss Prot No :</b>	P07766
<b>Specificity :</b>	endogenous
<b>Formulation :</b>	PBS, 50% glycerol, 0.05% Proclin 300, 0.05%BSA
<b>Source :</b>	Monoclonal, rabbit, IgG, Kappa
<b>Dilution :</b>	IHC 1:200-1:1000,WB 1:1000-1:5000,IF 1:200-1:1000,ELISA 1:5000-1:20000,IP 1:50-1:200,
<b>Purification :</b>	Protein A
<b>Storage Stability :</b>	-15 °C to -25 °C/1 year(Do not lower than -25 °C)
<b>Molecularweight :</b>	23kD
<b>Observed Band :</b>	23kD

**Background :** The protein encoded by this gene is the CD3-epsilon polypeptide, which together with CD3-gamma, -delta and -zeta, and the T-cell receptor alpha/beta and gamma/delta heterodimers, forms the T-cell receptor-CD3 complex. This complex plays an important role in coupling antigen recognition to several intracellular signal-transduction pathways. The genes encoding the epsilon, gamma and delta polypeptides are located in the same cluster on chromosome 11. The epsilon polypeptide plays an essential role in T-cell development. Defects in this gene cause immunodeficiency. This gene has also been linked to a susceptibility to type I diabetes in women. [provided by RefSeq, Jul 2008],

**Function :** function:The CD3 complex mediates signal transduction.,online information:CD3E mutation db,similarity:Contains 1 Ig-like (immunoglobulin-like) domain.,similarity:Contains 1 ITAM domain.,subunit:The TCR/CD3 complex of T-lymphocytes consists of either a TCR alpha/beta or TCR gamma/delta heterodimer coexpressed at the cell surface with the invariant subunits of CD3 labeled gamma, delta, epsilon, zeta, and eta.,

**Subcellular Location :** Membranous

**Expression :** Membranous

**Tag :** hot,recombinant

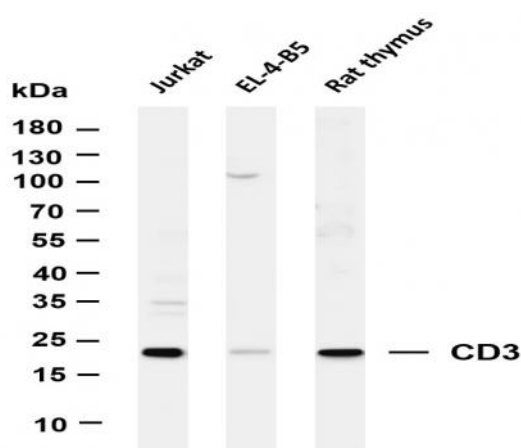
**Sort :** 1

**No4 :** 1

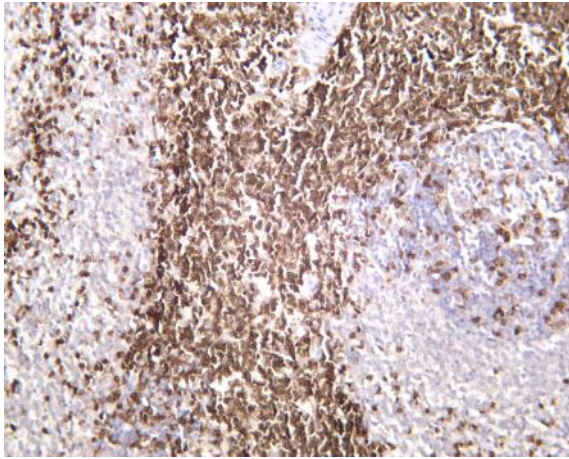
**Host :** Rabbit

**Modifications :** Unmodified

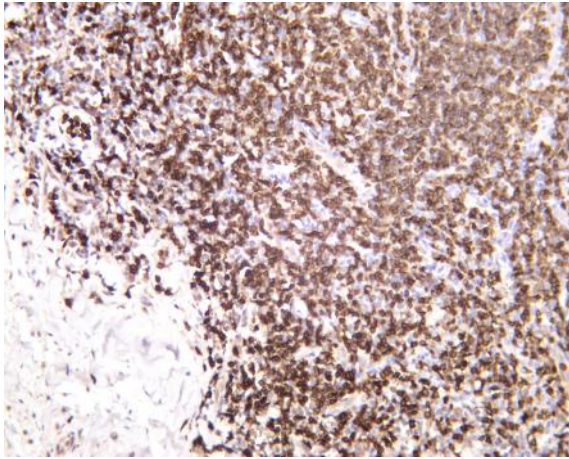
## Products Images



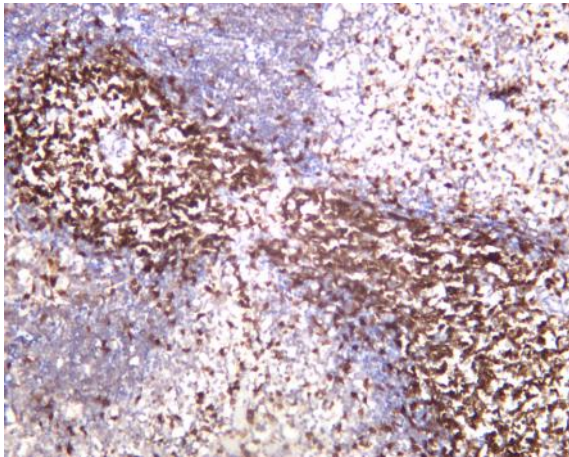
Various whole cell lysates were separated by 4-20% SDS-PAGE, and the membrane was blotted with anti-CD3 (PT0212R) antibody. The HRP-conjugated Goat anti-Rabbit IgG(H + L) antibody was used to detect the antibody. Lane 1:Jurkat Lane 2: EL-4-B5 Lane 3: Rat thymus Predicted band size: 23kDa Observed band size: 23kDa



Rat spleen was stained with anti-CD3 (PT0212R) rabbit antibody



Human tonsil was stained with anti-CD3 (PT0212R) rabbit antibody



Mouse spleen was stained with anti-CD3 (PT0212R) rabbit antibody