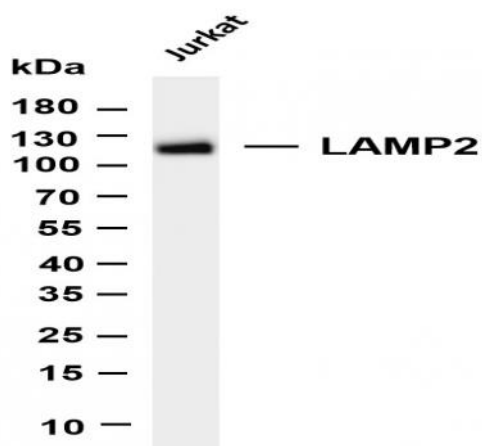


LAMP2 (PT0249R) PT® Rabbit mAb

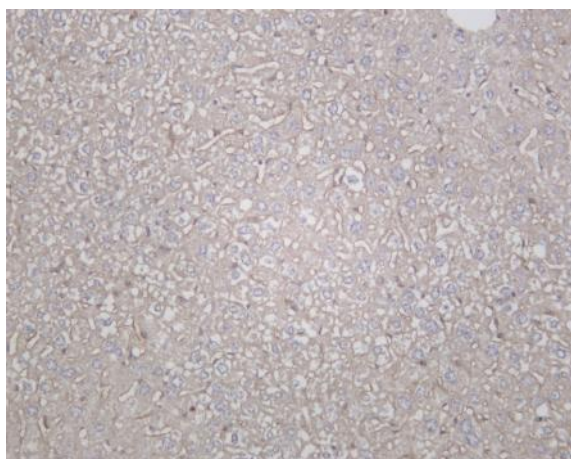
Catalog No :	YM8157
Reactivity :	Human;Mouse
Applications :	WB;IHC;IF;IP;ELISA
Target :	CD107b
Fields :	>>Autophagy - animal;>>Lysosome;>>Phagosome;>>Tuberculosis
Gene Name :	LAMP2
Protein Name :	Lysosome-associated membrane glycoprotein 2
Human Gene Id :	3920
Human Swiss Prot No :	P13473
Mouse Swiss Prot No :	P17047
Specificity :	endogenous
Formulation :	PBS, 50% glycerol, 0.05% Proclin 300, 0.05%BSA
Source :	Monoclonal, rabbit, IgG, Kappa
Dilution :	IHC 1:200-1:1000,WB 1:1000-1:5000,IF 1:200-1:1000,ELISA 1:5000-1:20000,IP 1:50-1:200,
Purification :	Protein A
Storage Stability :	-15°C to -25°C/1 year(Do not lower than -25°C)
Molecularweight :	45kD
Observed Band :	120kD

Background :	The protein encoded by this gene is a member of a family of membrane glycoproteins. This glycoprotein provides selectins with carbohydrate ligands. It may play a role in tumor cell metastasis. It may also function in the protection, maintenance, and adhesion of the lysosome. Alternative splicing of this gene results in multiple transcript variants encoding distinct proteins. [provided by RefSeq, Jul 2008],
Function :	disease:Defects in LAMP2 are the cause of Danon disease (DAND) [MIM:300257]; also known as glycogen storage disease type 2B (GSD2B). DAND is a lysosomal glycogen storage disease characterized by the clinical triad of cardiomyopathy, vacuolar myopathy and mental retardation. It is often associated with an accumulation of glycogen in muscle and lysosomes.,function:Implicated in tumor cell metastasis. May function in protection of the lysosomal membrane from autodigestion, maintenance of the acidic environment of the lysosome, adhesion when expressed on the cell surface (plasma membrane), and inter-and intracellular signal transduction.,PTM:O- and N-glycosylated; some of the 16 N-linked glycans are polylactosaminoglycans.,similarity:Belongs to the LAMP family.,subcellular location:This protein shuttles between lysosomes, endosomes, and the plasma membrane.,tissue specificity:Isoform LAMP-2A
Subcellular Location :	Membranous
Expression :	Isoform LAMP-2A is highly expressed in placenta, lung and liver, less in kidney and pancreas, low in brain and skeletal muscle (PubMed:7488019, PubMed:26856698). Isoform LAMP-2B is detected in spleen, thymus, prostate, testis, small intestine, colon, skeletal muscle, brain, placenta, lung, kidney, ovary and pancreas and liver (PubMed:7488019, PubMed:26856698). Isoform LAMP-2C is detected in small intestine, colon, heart, brain, skeletal muscle, and at lower levels in kidney and placenta (PubMed:26856698).
Tag :	hot,recombinant
Sort :	1
No4 :	1
Host :	Rabbit
Modifications :	Unmodified

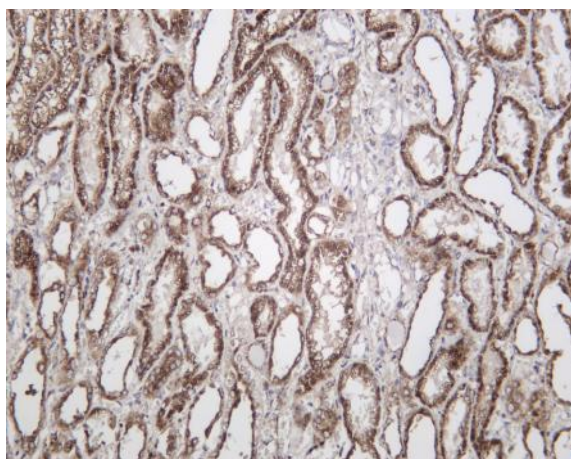
Products Images



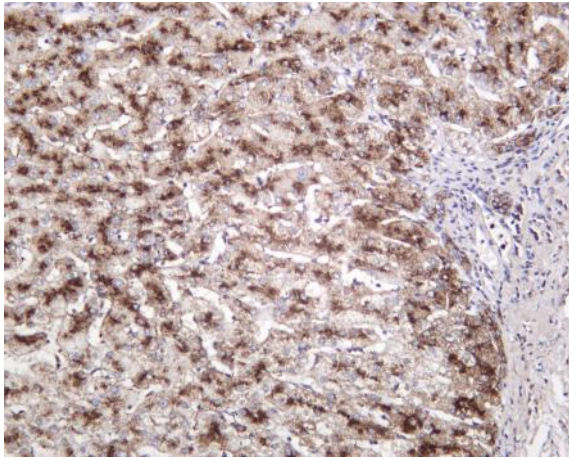
Various whole cell lysates were separated by 4-20% SDS-PAGE, and the membrane was blotted with anti-LAMP2 (PT0249R) antibody. The HRP-conjugated Goat anti-Rabbit IgG(H + L) antibody was used to detect the antibody. Lane 1: Jurkat
Predicted band size: 45kDa Observed band size: 120kDa



Mouse liver was stained with Anti-LAMP2 (PT0249R) rabbit antibody



Human kidney was stained with Anti-LAMP2 (PT0249R) rabbit antibody



Human liver was stained with Anti-LAMP2 (PT0249R) rabbit antibody