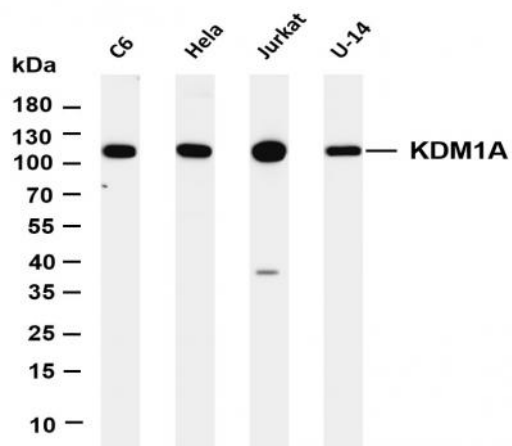


KDM1A (PT0215R) PT® Rabbit mAb

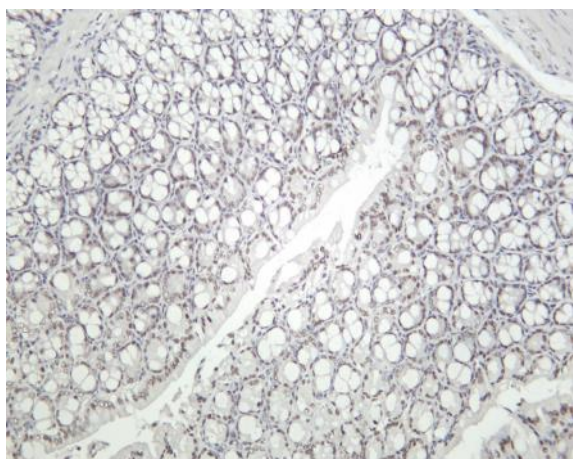
Catalog No :	YM8137
Reactivity :	Human;Mouse;Rat;
Applications :	WB;IHC;IF;IP;ELISA
Target :	LSD1
Fields :	>>Thermogenesis
Gene Name :	KDM1A AOF2 KDM1 KIAA0601 LSD1
Protein Name :	LSD1 (Ser131)
Human Gene Id :	23028
Human Swiss Prot No :	O60341
Mouse Gene Id :	99982
Mouse Swiss Prot No :	Q6ZQ88
Specificity :	endogenous
Formulation :	PBS, 50% glycerol, 0.05% Proclin 300, 0.05%BSA
Source :	Monoclonal, rabbit, IgG, Kappa
Dilution :	IHC 1:200-1:1000,WB 1:1000-1:5000,IF 1:200-1:1000,ELISA 1:5000-1:20000,IP 1:50-1:200,
Purification :	Protein A
Storage Stability :	-15°C to -25°C/1 year(Do not lower than -25°C)
Molecularweight :	93kD

Observed Band :	110kD
Background :	This gene encodes a nuclear protein containing a SWIRM domain, a FAD-binding motif, and an amine oxidase domain. This protein is a component of several histone deacetylase complexes, though it silences genes by functioning as a histone demethylase. Alternative splicing results in multiple transcript variants. [provided by RefSeq, Apr 2009],
Function :	cofactor:FAD.,domain:The SWIRN domain may act as an anchor site for a histone tail.,function:Histone demethylase that demethylates 'Lys-4' of histone H3, a specific tag for epigenetic transcriptional activation, thereby acting as a corepressor. Acts by oxidizing the substrate by FAD to generate the corresponding imine that is subsequently hydrolyzed. Demethylates both mono- and di-methylated 'Lys-4' of histone H3. May play a role in the repression of neuronal genes. Alone, it is unable to demethylate H3 'Lys-4' on nucleosomes and requires the presence of RCOR1/CoREST to achieve such activity. May also demethylate 'Lys-9' of histone H3, a specific tag for epigenetic transcriptional repression, thereby leading to derepression of androgen receptor target genes. Demethylates di-methylated 'Lys-370' of p53/TP53 which prevents interaction of p53/TP53 with TP53BP1 and represses p53/TP53-mediate
Subcellular Location :	Nucleus
Expression :	Ubiquitously expressed.
Tag :	hot,recombinant
Sort :	9264
No4 :	1
Host :	Rabbit
Modifications :	Unmodified

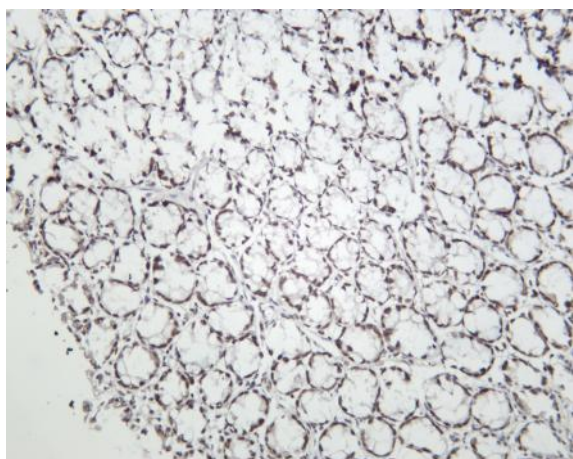
Products Images



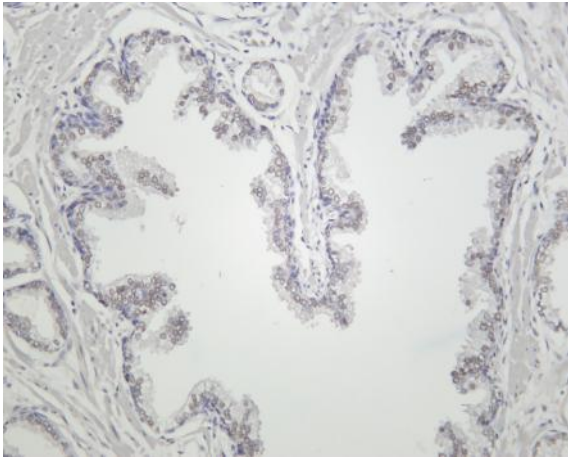
Various whole cell lysates were separated by 4-20% SDS-PAGE, and the membrane was blotted with anti-KDM1A (PT0215R) antibody. The HRP-conjugated Goat anti-Rabbit IgG(H + L) antibody was used to detect the antibody. Lane 1: C6 Lane 2: HeLa Lane 3: Jurkat Lane 4: U-14 Predicted band size: 93kDa Observed band size: 110kDa



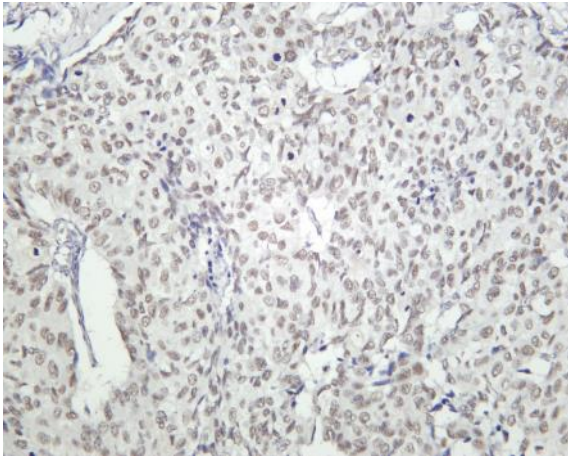
Mouse colon was stained with Anti-KDM1A (PT0215R) rabbit antibody



Rat colon was stained with Anti-KDM1A (PT0215R) rabbit antibody



Human prostate was stained with Anti-KDM1A (PT0215R) rabbit antibody



Human prostate carcinoma was stained with Anti-KDM1A (PT0215R) rabbit antibody