

**Integrin  $\beta$ 1 (PT0512R) PT® Rabbit mAb**

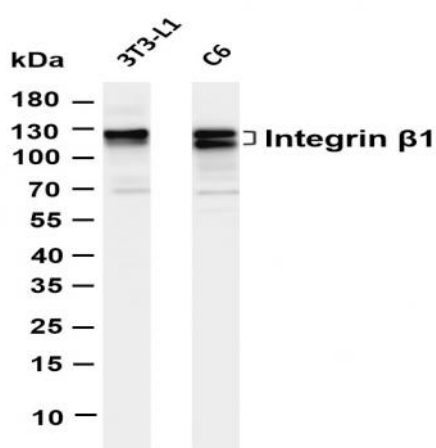
<b>Catalog No :</b>	YM8338
<b>Reactivity :</b>	Human; Mouse; Rat;
<b>Applications :</b>	WB;IHC;IF;IP;ELISA
<b>Target :</b>	Integrin $\beta$ 1
<b>Fields :</b>	>>Rap1 signaling pathway;>>Phagosome;>>PI3K-Akt signaling pathway;>>Axon guidance;>>Focal adhesion;>>ECM-receptor interaction;>>Cell adhesion molecules;>>Tight junction;>>Platelet activation;>>Leukocyte transendothelial migration;>>Regulation of actin cytoskeleton;>>Bacterial invasion of epithelial cells;>>Pathogenic Escherichia coli infection;>>Shigellosis;>>Pertussis;>>Yersinia infection;>>Leishmaniasis;>>Toxoplasmosis;>>Human papillomavirus infection;>>Pathways in cancer;>>Proteoglycans in cancer;>>Small cell lung cancer;>>Hypertrophic cardiomyopathy;>>Arrhythmogenic right ventricular cardiomyopathy;>>Dilated cardiomyopathy
<b>Gene Name :</b>	ITGB1
<b>Protein Name :</b>	Integrin beta-1
<b>Human Gene Id :</b>	3688
<b>Human Swiss Prot No :</b>	P05556
<b>Mouse Gene Id :</b>	16412
<b>Mouse Swiss Prot No :</b>	P09055
<b>Rat Gene Id :</b>	24511
<b>Rat Swiss Prot No :</b>	P49134
<b>Specificity :</b>	endogenous
<b>Formulation :</b>	PBS, 50% glycerol, 0.05% Proclin 300, 0.05%BSA

<b>Source :</b>	Monoclonal, rabbit, IgG, Kappa
<b>Dilution :</b>	IHC 1:2000-1:10000;WB 1:2000-1:10000;IF 1:200-1:1000;ELISA 1:5000-1:20000;IP 1:50-1:200;
<b>Purification :</b>	Protein A
<b>Storage Stability :</b>	-15°C to -25°C/1 year(Do not lower than -25°C)
<b>Molecularweight :</b>	88kD
<b>Observed Band :</b>	115-125kD
<b>Cell Pathway :</b>	Axon guidance;Focal adhesion;ECM-receptor interaction;Cell adhesion molecules (CAMs);Leukocyte transendothelial migration;Regulates Actin and Cytoskeleton;Pathogenic Escherichia coli infection;Pathway
<b>Background :</b>	Integrins are heterodimeric proteins made up of alpha and beta subunits. At least 18 alpha and 8 beta subunits have been described in mammals. Integrin family members are membrane receptors involved in cell adhesion and recognition in a variety of processes including embryogenesis, hemostasis, tissue repair, immune response and metastatic diffusion of tumor cells. This gene encodes a beta subunit. Multiple alternatively spliced transcript variants which encode different protein isoforms have been found for this gene. [provided by RefSeq, Jul 2008],
<b>Function :</b>	function:Integrins alpha-1/beta-1, alpha-2/beta-1, alpha-10/beta-1 and alpha-11/beta-1 are receptors for collagen. Integrins alpha-1/beta-1 and alpha-2/beta-2 recognize the proline-hydroxylated sequence G-F-P-G-E-R in collagen. Integrins alpha-2/beta-1, alpha-3/beta-1, alpha-4/beta-1, alpha-5/beta-1, alpha-8/beta-1, alpha-10/beta-1, alpha-11/beta-1 and alpha-V/beta-1 are receptors for fibronectin. Alpha-4/beta-1 recognizes one or more domains within the alternatively spliced CS-1 and CS-5 regions of fibronectin. Integrin alpha-5/beta-1 is a receptor for fibrinogen. Integrin alpha-1/beta-1, alpha-2/beta-1, alpha-6/beta-1 and alpha-7/beta-1 are receptors for lamimin. Integrin alpha-4/beta-1 is a receptor for VCAM1. It recognizes the sequence Q-I-D-S in VCAM1. Integrin alpha-9/beta-1 is a receptor for VCAM1, cytotactin and osteopontin. It recognizes the sequence A-E-I-D-G-I-E-L in cytotacti
<b>Subcellular Location :</b>	Membrane
<b>Expression :</b>	[Isoform 1]: Widely expressed, other isoforms are generally coexpressed with a more restricted distribution. ; [Isoform 2]: Expressed in skin, liver, skeletal muscle, cardiac muscle, placenta, umbilical vein endothelial cells, neuroblastoma cells, lymphoma cells, hepatoma cells and astrocytoma cells. ; [Isoform 3]: Together with isoform 4, is expressed in muscle, kidney, liver, placenta, cervical epithelium, umbilical vein endothelial cells, fibroblast cells, embryonal kidney cells, platelets

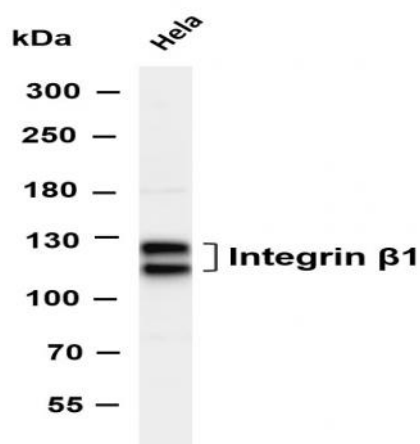
and several blood cell lines. Expressed in non-proliferating and differentiated prostate gland epithelial cells and in platelets, on the surface of erythroleukemia cells and in various hematopoietic cell lines. ; [Isoform 4]: Together with isoform 3, is expressed in muscle, kidney, liver, placenta, ce

<b>Tag :</b>	hot,recombinant
<b>Sort :</b>	1
<b>No4 :</b>	1
<b>Host :</b>	Rabbit
<b>Modifications :</b>	Unmodified

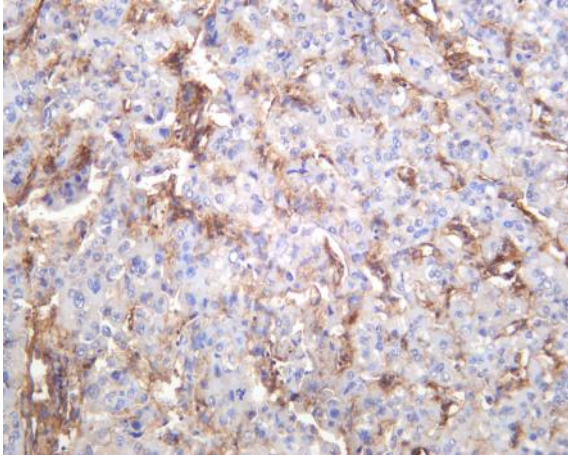
## Products Images



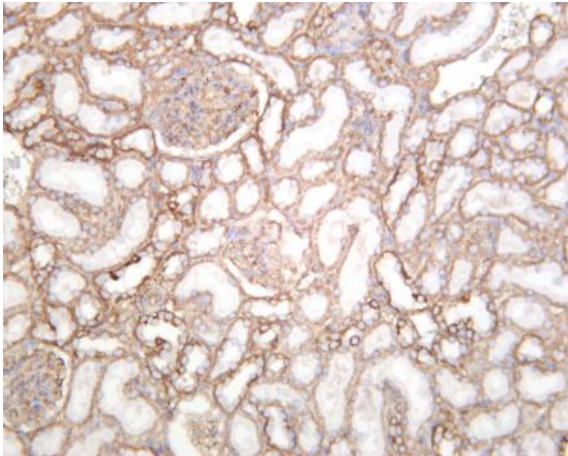
Various whole cell lysates were separated by 4-20% SDS-PAGE, and the membrane was blotted with anti-Integrin  $\beta$ 1 (PT0512R) antibody. The HRP-conjugated Goat anti-Rabbit IgG(H + L) antibody was used to detect the antibody. Lane 1: 3T3-L1 Lane 2: C6 Predicted band size: 88kDa Observed band size: 115-125kDa



Various whole cell lysates were separated by 4-8% SDS-PAGE, and the membrane was blotted with anti-Integrin  $\beta$ 1 (PT0512R) antibody. The HRP-conjugated Goat anti-Rabbit IgG(H + L) antibody was used to detect the antibody. Lane 1: HeLa Predicted band size: 88kDa Observed band size: 115-125kDa



Human hepatocellular carcinoma was stained with anti-Integrin  $\beta$ 1 (PT0512R) rabbit antibody



Rat kidney was stained with anti-Integrin  $\beta$ 1 (PT0512R) rabbit antibody