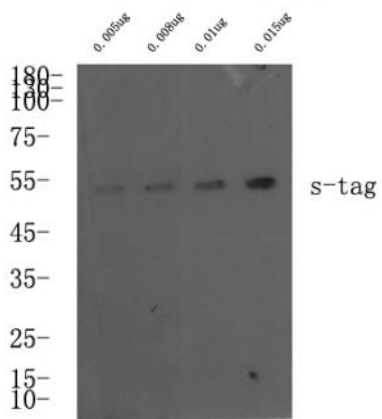


## S-Tag Polyclonal Antibody

<b>Catalog No :</b>	YG0007
<b>Reactivity :</b>	Species independent
<b>Applications :</b>	WB;ELISA
<b>Target :</b>	S-Tag
<b>Gene Name :</b>	S Tag
<b>Protein Name :</b>	S Tag
<b>Immunogen :</b>	Synthetic peptide within S tag.
<b>Specificity :</b>	Rabbit polyclonal to S tag
<b>Formulation :</b>	Liquid in PBS containing 50% glycerol, and 0.02% sodium azide.
<b>Source :</b>	Polyclonal, Rabbit,IgG
<b>Dilution :</b>	WB 1:1000-5000, ELISA(peptide)1:5000-20000
<b>Purification :</b>	The antibody was affinity-purified from mouse ascites by affinity-chromatography using specific immunogen.
<b>Concentration :</b>	1 mg/ml
<b>Storage Stability :</b>	-15°C to -25°C/1 year(Do not lower than -25°C)
<b>Tag :</b>	hot,overexpression
<b>Sort :</b>	16652
<b>No4 :</b>	1
<b>Host :</b>	Rabbit

**Modifications :** Unmodified

## Products Images



Western blot analysis of S-Tag fusion protein at 0.05-0.15ug, 4° over night, secondary antibody(cat: RS0002 was diluted at 1:10000, 37° 1 hour.