

β-Tubulin Monoclonal Antibody(5G3), AbFluor 488 Conjugated

Catalog No :	YM2198
Reactivity :	Human;Rat;Mouse;Mk;Dg;Ch;Hamster;Rabbit;sheep;Insect;Yeast
Applications :	WB;IF;IHC
Target :	Tubulin β
Fields :	>>Phagosome;>>Gap junction;>>Alzheimer disease;>>Parkinson disease;>>Amyotrophic lateral sclerosis;>>Huntington disease;>>Prion disease;>>Pathways of neurodegeneration - multiple diseases;>>Pathogenic Escherichia coli infection;>>Salmonella infection
Gene Name :	TUBB3
Protein Name :	Tubulin beta-3 chain
Human Gene Id :	10381
Human Swiss Prot No :	Q13509
Specificity :	β-Tubulin Monoclonal Antibody(5G3) AbFluor™ 488 Conjugated specially designed for your Immunofluorescence analysis.
Formulation :	Liquid in PBS, pH 7.4, containing 0.02% sodium azide as preservative and 50% Glycerol.
Source :	Monoclonal, Mouse IgG1
Dilution :	Optimal working dilutions should be determined experimentally by the investigator. Suggested starting dilutions are as follows: IHC 1:200, IF 1:200.
Purification :	The antibody was affinity-purified from mouse ascites by affinity-chromatography using specific immunogen.
Concentration :	1mg/ml
Storage Stability :	Stable for one year at -15°C to -25°C from date of shipment. For maximum recovery of product, centrifuge the original vial after thawing and prior to removing

the cap. Aliquot to avoid repeated freezi

Background : tubulin beta 3 class III(TUBB3) Homo sapiens This gene encodes a class III member of the beta tubulin protein family. Beta tubulins are one of two core protein families (alpha and beta tubulins) that heterodimerize and assemble to form microtubules. This protein is primarily expressed in neurons and may be involved in neurogenesis and axon guidance and maintenance. Mutations in this gene are the cause of congenital fibrosis of the extraocular muscles type 3. Alternate splicing results in multiple transcript variants. A pseudogene of this gene is found on chromosome 6. [provided by RefSeq, Oct 2010],

Function : domain:The highly acidic C-terminal region may bind cations such as calcium.,function:Receptor for MSH (alpha, beta and gamma) and ACTH. The activity of this receptor is mediated by G proteins which activate adenylate cyclase.,function:Tubulin is the major constituent of microtubules. It binds two moles of GTP, one at an exchangeable site on the beta chain and one at a non-exchangeable site on the alpha-chain.,polymorphism:Genetic variations in MC1R are associated with variation in skin/hair/eye pigmentation type 2 (SHEP2) [MIM:266300]. Hair, eye and skin pigmentation are among the most visible examples of human phenotypic variation, with a broad normal range that is subject to substantial geographic stratification. In the case of skin, individuals tend to have lighter pigmentation with increasing distance from the equator. By contrast, the majority of variation in human eye and hair col

Subcellular Location : Cytoplasm, cytoskeleton . Cell projection, growth cone . Cell projection, lamellipodium . Cell projection, filopodium .

Expression : Expression is primarily restricted to central and peripheral nervous system. Greatly increased expression in most cancerous tissues.

Sort : 24883

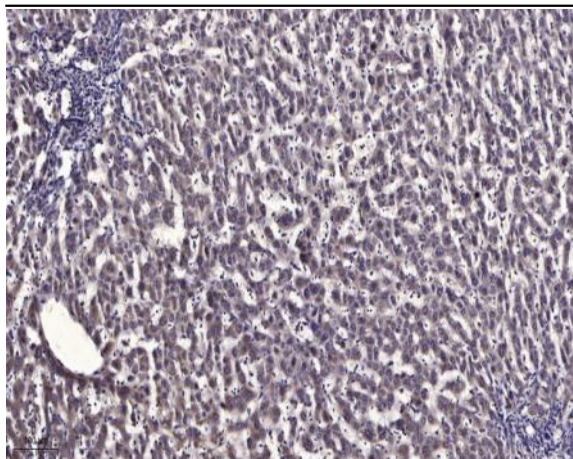
No4 : 1

Host : Mouse

Modifications : Unmodified

Conjugate : AbFluor 488

Products Images



Immunohistochemical analysis of paraffin-embedded human liver cancer. 1, Antibody was diluted at 1:200(4° overnight). 2, Tris-EDTA,pH9.0 was used for antigen retrieval. 3,Secondary antibody was diluted at 1:200(room temperature, 45min).