

FOXP3 (PT0211R) PT® Rabbit mAb

| | |
|------------------------------|---|
| Catalog No : | YM8133 |
| Reactivity : | Human;Mouse |
| Applications : | WB;IHC;IF;IP;ELISA |
| Target : | FOXP3 |
| Fields : | >>Th17 cell differentiation;>>Inflammatory bowel disease |
| Gene Name : | FOXP3 |
| Protein Name : | Forkhead box protein P3 |
| Human Gene Id : | 50943 |
| Human Swiss Prot No : | Q9BZS1 |
| Mouse Gene Id : | 20371 |
| Mouse Swiss Prot No : | Q99JB6 |
| Specificity : | endogenous |
| Formulation : | PBS, 50% glycerol, 0.05% Proclin 300, 0.05%BSA |
| Source : | Monoclonal, rabbit, IgG, Kappa |
| Dilution : | IHC 1:200-1:1000,WB 1:1000-1:5000,IF 1:200-1:1000,ELISA 1:5000-1:20000,IP 1:50-1:200, |
| Purification : | Protein A |
| Storage Stability : | -15°C to -25°C/1 year(Do not lower than -25°C) |
| Molecularweight : | 47kD |

Observed Band : 47kD

Background : The protein encoded by this gene is a member of the forkhead/winged-helix family of transcriptional regulators. Defects in this gene are the cause of immunodeficiency polyendocrinopathy, enteropathy, X-linked syndrome (IPEX), also known as X-linked autoimmunity-immunodeficiency syndrome. Alternatively spliced transcript variants encoding different isoforms have been identified. [provided by RefSeq, Jul 2008],

Function : disease:Defects in FOXP3 are the cause of immunodeficiency polyendocrinopathy, enteropathy, X-linked syndrome (IPEX) [MIM:304790]; also known as X-linked autoimmunity-immunodeficiency syndrome. IPEX is characterized by neonatal onset insulin-dependent diabetes mellitus, infections, secretory diarrhea, thrombocytopenia, anemia and eczema. It is usually lethal in infancy.,function:Probable transcription factor. Plays a critical role in the control of immune response.,online information:FOXP3 entry,online information:FOXP3 mutation db,similarity:Contains 1 C2H2-type zinc finger.,similarity:Contains 1 fork-head DNA-binding domain.,

Subcellular Location : Nucleus

Tag : hot,recombinant

Sort : 1

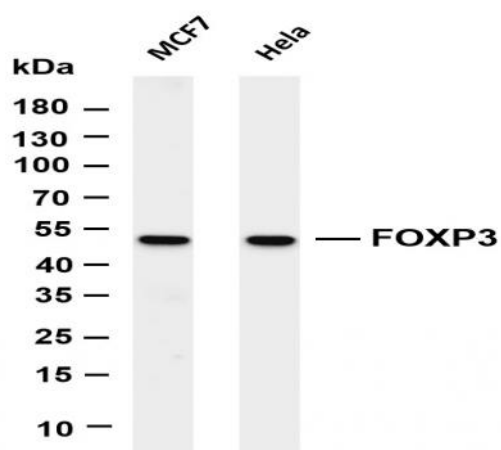
No3 : ab20034

No4 : 1

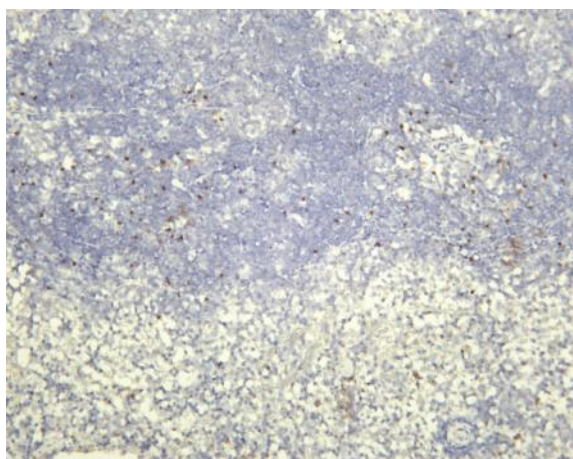
Host : Rabbit

Modifications : Unmodified

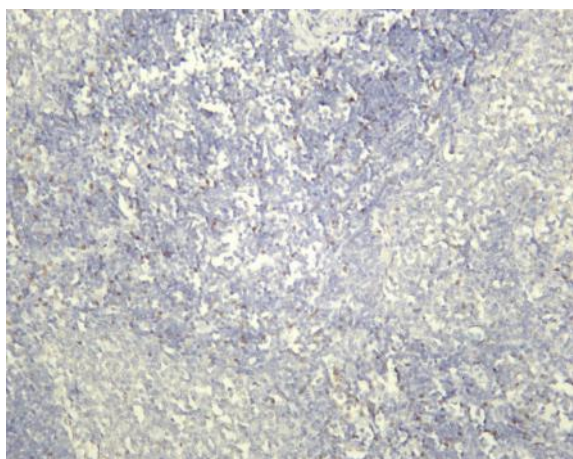
Products Images



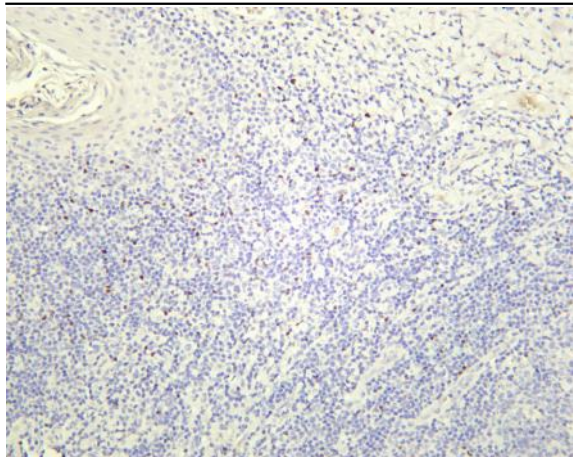
Various whole cell lysates were separated by 4-20% SDS-PAGE, and the membrane was blotted with anti-FOXP3 (PT0211R) antibody. The HRP-conjugated Goat anti-Rabbit IgG(H + L) antibody was used to detect the antibody. Lane 1: MCF7 Lane 2: HeLa Predicted band size: 47kDa Observed band size: 47kDa



Mouse spleen was stained with Anti-FOXP3 (PT0211R) rabbit antibody



Rat spleen was stained with Anti-FOXP3 (PT0211R) rabbit antibody



Human tonsil was stained with Anti-FOXP3 (PT0211R) rabbit antibody