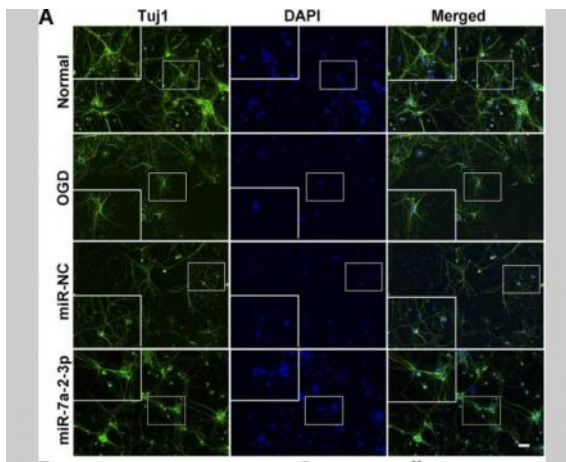


FITC* Goat Anti Rabbit IgG(H+L)

Catalog No :	RS0004
Reactivity :	Rabbit
Applications :	IF;ELISA
Target :	Rabbit IgG(H+L)
Formulation :	Liquid in PBS containing 50% glycerol, 0.5% BSA and 0.02% sodium azide.
Source :	Goat
Dilution :	Optimal working dilutions should be determined experimentally by the investigator. Suggested starting dilutions are IF (1:250 - 1:2000),
Purification :	The antibody was affinity-purified from goat antiserum by affinity-chromatography using epitope-specific immunogen.
Concentration :	4 mg/ml
Storage Stability :	-15°C to -25°C/1 year(Do not lower than -25°C)
Background :	Immunoway secondary antibodies are available conjugated to enzyme, biotin or fluorophore for use in a variety of antibody-based applications including Western Blot, ImmunoHistoChemistry, ImmunoFluorescence, Flow Cytometry and ELISA. We offer high quality secondary antibodies from goat, rabbit and donkey sources for your each application. Serum adsorbed secondary antibodies are also available and are recommended for use with immunoglobulin-rich samples.
Tag :	hot
Sort :	1
No4 :	1
Host :	Goat
Conjugate :	FITC

Products Images



Zhang, Zi-Bin, et al. "miRNA-7a-2-3p Inhibits Neuronal Apoptosis in Oxygen-Glucose Deprivation (OGD) Model." *Frontiers in neuroscience* 13 (2019).