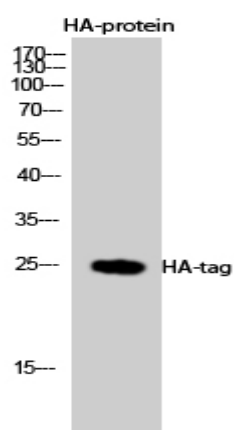


HA-tag Polyclonal Antibody

Catalog No :	YG0003
Reactivity :	Species independent
Applications :	WB;ELISA
Target :	HA-tag
Gene Name :	HA Tag
Protein Name :	HA-Tag
Immunogen :	HA synthetic peptide conjugated to KLH.
Specificity :	HA-tag Polyclonal Antibody detects HA-tagged recombinant proteins or HA-tagged proteins overexpressed in cells.
Formulation :	Liquid in PBS containing 50% glycerol, 0.5% BSA and 0.02% sodium azide.
Source :	Polyclonal, Rabbit,IgG
Dilution :	WB 1:1000 - 1:3000. Not yet tested in other applications.
Purification :	The antibody was affinity-purified from rabbit antiserum by affinity-chromatography using epitope-specific immunogen.
Concentration :	1 mg/ml
Storage Stability :	-15°C to -25°C/1 year(Do not lower than -25°C)
Observed Band :	15kD
Background :	The HA tag (Y-P-Y-D-V-P-D-Y-A) is derived from an epitope (amino acids 98-106) of the influenza hemagglutinin (HA) protein. HA tag is used as a general epitope tag in expression vectors for many recombinant proteins. The presence of HA tag facilitates the detection, isolation and purification of recombinant fusion proteins.

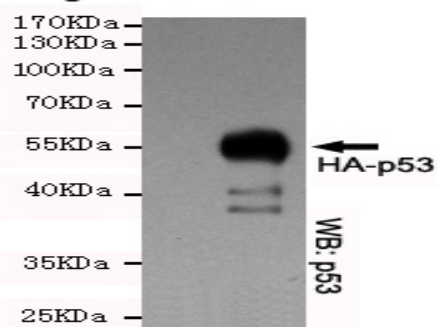
Tag :	orthogonal,overexpression
Sort :	1
No1 :	ab9110
No3 :	ab9110
No4 :	1
Host :	Rabbit
Modifications :	Unmodified

Products Images



Western Blot analysis using HA-tag Polyclonal Antibody against HEK293 cells transfected with vector overexpressing HA tag (1) and untransfected (2). Antibody was diluted at 1:2000. Secondary antibody(catalog#:RS0002) was diluted at 1:20000

Ctrl IgG IP: + -
HA-Tag IP: - +



IP analysis of HA-tag Polyclonal Antibody