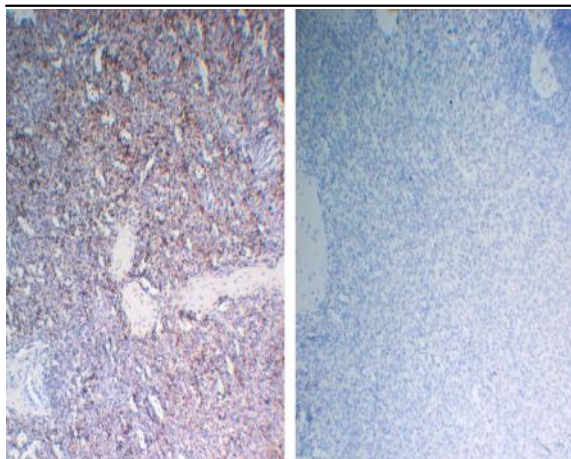


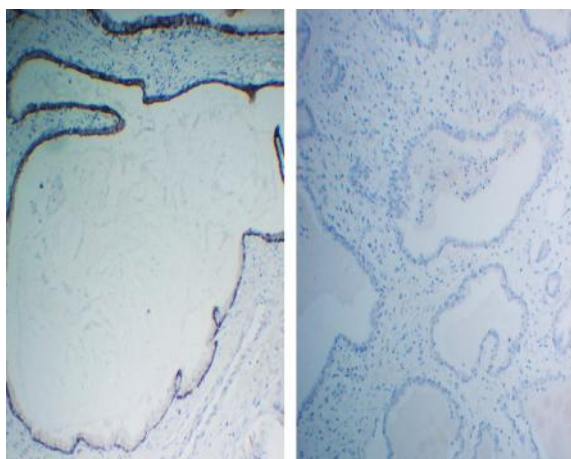
Negative Control for mouse IgG3, kappa Primary Antibody

Catalog No :	VN0004
Reactivity :	Human;Mouse;Rat;Bovine;Pig;Chick;
Applications :	IHC;IP;IF;ELISA
Human Swiss Prot No :	/
Formulation :	PBS, 50% glycerol, 0.05% Proclin 300, 0.05%BSA
Source :	Mouse, Monoclonal/IgG3, kappa
Dilution :	IHC 1:200-1000. IF 1:100-500. ELISA 1:1000-5000
Purification :	Protein G
Concentration :	1 mg/ml
Storage Stability :	-15°C to -25°C/1 year(Do not lower than -25°C)
Subcellular Location :	No staining
Sort :	1
No4 :	1
Host :	Mouse
Modifications :	Unmodified

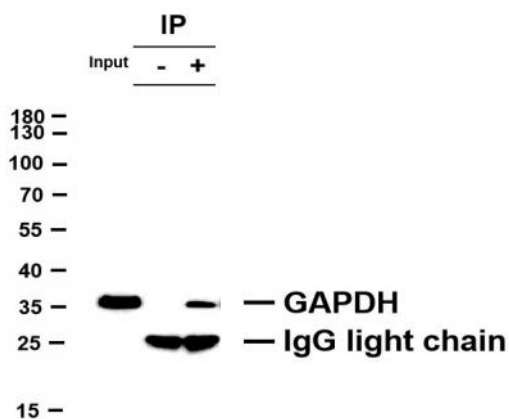
Products Images



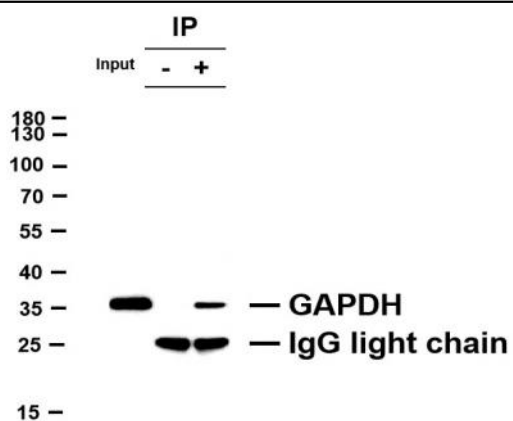
Immunohistochemical analysis of paraffin-embedded human spleen tissue using anti-CD42b mouse mAb (left) and mouse IgG3, kappa monoclonal control (VN004, right).



Immunohistochemical analysis of paraffin-embedded human prostate tissue using anti-Cytokeratin 14 mouse mAb (YM6031, left) and mouse IgG3, kappa monoclonal control (VN004, right).



GAPDH was immunoprecipitated from Hela whole cell lysate with anti-GAPDH (PTR2304) antibody. Western blot was performed on the immunoprecipitate using anti-GAPDH antibody, and followed by the HRP-conjugated Goat anti-Mouse IgG (H + L) antibody. Lane 1 (Input) : Hela whole cell lysate Lane 2 (-) : Mouse monoclonal IgG3 (vn0004, Isotype Control) instead of GAPDH antibody in Hela whole cell lysate. Lane 3 (+) : GAPDH antibody IP in Hela whole cell lysate



GAPDH was immunoprecipitated from SW480 whole cell lysate with anti-GAPDH (PTR2304) antibody. Western blot was performed on the immunoprecipitate using anti-GAPDH antibody, and followed by the HRP-conjugated Goat anti-Mouse IgG (H + L) antibody. Lane 1 (Input) : SW480 whole cell lysate Lane 2 (-) : Mouse monoclonal IgG3 (vn0004, Isotype Control) instead of GAPDH antibody in SW480 whole cell lysate. Lane 3 (+) : GAPDH antibody IP in SW480 whole cell lysate