

GRAP2 mouse mAb

Catalog No :	YM1453
Reactivity :	Human
Applications :	WB
Target :	GRAP2
Fields :	>>T cell receptor signaling pathway
Gene Name :	grap2
Human Gene Id :	9402
Human Swiss Prot No :	O75791
Mouse Swiss Prot No :	O89100
Immunogen :	Recombinant protein of human GRAP2.
Specificity :	This antibody detects endogenous levels of GRAP2 and does not cross-react with related proteins.
Formulation :	Liquid in PBS containing 50% glycerol, 0.5% BSA and 0.02% sodium azide.
Source :	Monoclonal, Mouse
Dilution :	wb dilution 1:1000
Purification :	The antibody was affinity-purified from mouse ascites by affinity-chromatography using epitope-specific immunogen.
Concentration :	1 mg/ml
Storage Stability :	-15°C to -25°C/1 year(Do not lower than -25°C)
Observed Band :	38kD

Cell Pathway : T_Cell_Receptor;

Background : This gene encodes a member of the GRB2/Sem5/Drk family. This member is an adaptor-like protein involved in leukocyte-specific protein-tyrosine kinase signaling. Like its related family member, GRB2-related adaptor protein (GRAP), this protein contains an SH2 domain flanked by two SH3 domains. This protein interacts with other proteins, such as GRB2-associated binding protein 1 (GAB1) and the SLP-76 leukocyte protein (LCP2), through its SH3 domains. Multiple alternatively spliced transcript variants encoding distinct isoforms have been found for this gene. [provided by RefSeq, Apr 2014],

Function : function:Interacts with SLP-76 to regulate NF-AT activation. Binds to tyrosine-phosphorylated shc.,similarity:Belongs to the GRB2/sem-5/DRK family.,similarity:Contains 1 SH2 domain.,similarity:Contains 2 SH3 domains.,subunit:Interacts with phosphorylated LIME1 upon TCR activation (By similarity). Interacts with phosphorylated LAT and LAX1 upon TCR activation. Interacts with SHB.,

Subcellular Location : Nucleus . Cytoplasm . Endosome .

Expression : Blood,Lung,Platelet,Spleen,T-cell,Thymus,

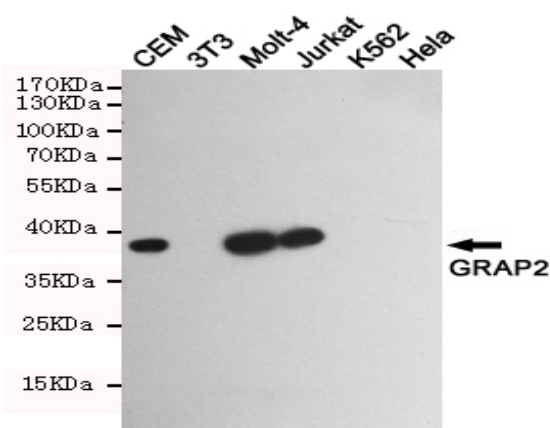
Sort : 7092

No4 : 1

Host : Mouse

Modifications : Unmodified

Products Images



Western blot detection of GRAP2 in GRAP2 positive cell (CEM,Molt-4,Jurkat) and negative cell (3T3,K562,Hela) lysates using GRAP2 mouse mAb (1:1000 diluted).Predicted band size:38KDa.Observed band size:38KDa.