

## Phostensin mouse mAb

<b>Catalog No :</b>	YM1357
<b>Reactivity :</b>	Human
<b>Applications :</b>	WB
<b>Target :</b>	Phostensin
<b>Gene Name :</b>	ppp1r18
<b>Human Gene Id :</b>	170954
<b>Human Swiss Prot No :</b>	Q6NYC8
<b>Mouse Swiss Prot No :</b>	Q8BQ30
<b>Immunogen :</b>	Purified recombinant human Phostensin protein fragments expressed in E.coli.
<b>Specificity :</b>	This antibody detects endogenous levels of Phostensin and does not cross-react with related proteins.
<b>Formulation :</b>	Liquid in PBS containing 50% glycerol, 0.5% BSA and 0.02% sodium azide.
<b>Source :</b>	Monoclonal, Mouse
<b>Dilution :</b>	wb 1:200
<b>Purification :</b>	The antibody was affinity-purified from mouse ascites by affinity-chromatography using epitope-specific immunogen.
<b>Concentration :</b>	1 mg/ml
<b>Storage Stability :</b>	-15°C to -25°C/1 year(Do not lower than -25°C)
<b>Observed Band :</b>	120kD
<b>Background :</b>	Protein phosphatase-1 (PP1; see MIM 176875) interacts with regulatory subunits that target the enzyme to different cellular locations and change its

activity toward specific substrates. Phostensin is a regulatory subunit that targets PP1 to F-actin (see MIM 102610) cytoskeleton (Kao et al., 2007 [PubMed 17374523]).[supplied by OMIM, Mar 2008],

**Function :**

function:May target protein phosphatase 1 to F-actin cytoskeleton.,subunit:Interacts with Protein phosphatase 1 (PP1).,tissue specificity:Predominantly expressed in leukocytes and spleen.,

**Subcellular Location :**

[Isoform 1]: Cytoplasm, cytoskeleton .; [Isoform 4]: Cytoplasm, cytoskeleton .

**Expression :**

Isoform 4 is predominantly expressed in leukocytes and spleen.

**Sort :**

12675

**No4 :**

1

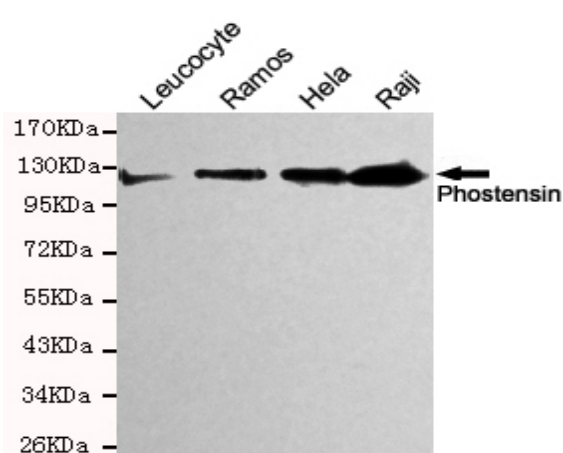
**Host :**

Mouse

**Modifications :**

Unmodified

## Products Images



Western blot detection of Phostensin in HeLa,Raji,Ramos and Leucocyte cell lysates and using Phostensin mouse mAb (1:200 diluted).Predicted band size: 120KDa.Observed band size: 120KDa.