

## LRRFIP1 mouse mAb

<b>Catalog No :</b>	YM1320
<b>Reactivity :</b>	Human;Mouse
<b>Applications :</b>	WB
<b>Target :</b>	LRRFIP1
<b>Gene Name :</b>	lrrfip1
<b>Human Gene Id :</b>	9208
<b>Human Swiss Prot No :</b>	Q32MZ4
<b>Mouse Swiss Prot No :</b>	Q3UZ39
<b>Immunogen :</b>	Purified recombinant human LRRFIP1 protein fragments expressed in E.coli.
<b>Specificity :</b>	This antibody detects endogenous levels of LRRFIP1 and does not cross-react with related proteins.
<b>Formulation :</b>	Liquid in PBS containing 50% glycerol, 0.5% BSA and 0.02% sodium azide.
<b>Source :</b>	Monoclonal, Mouse
<b>Dilution :</b>	wb 1:1000
<b>Purification :</b>	The antibody was affinity-purified from mouse ascites by affinity-chromatography using epitope-specific immunogen.
<b>Concentration :</b>	1 mg/ml
<b>Storage Stability :</b>	-15°C to -25°C/1 year(Do not lower than -25°C)
<b>Observed Band :</b>	160kD
<b>Background :</b>	developmental stage:Widely expressed in fetal tissues.,function:Transcriptional repressor which preferentially binds to the GC-rich consensus sequence

(5'-AGCCCCCGGCG-3') and may regulate expression of TNF, EGFR and PDGFA. May control smooth muscle cells proliferation following artery injury through PDGFA repression. May also bind double-stranded RNA.,sequence caution:Contaminating sequence. Potential poly-A sequence.,similarity:Belongs to the LRRFIP family.,subunit:Interacts with FLII.,tissue specificity:Ubiquitously expressed.,

**Function :**

developmental stage:Widely expressed in fetal tissues.,function:Transcriptional repressor which preferentially binds to the GC-rich consensus sequence (5'-AGCCCCCGGCG-3') and may regulate expression of TNF, EGFR and PDGFA. May control smooth muscle cells proliferation following artery injury through PDGFA repression. May also bind double-stranded RNA.,sequence caution:Contaminating sequence. Potential poly-A sequence.,similarity:Belongs to the LRRFIP family.,subunit:Interacts with FLII.,tissue specificity:Ubiquitously expressed.,

**Subcellular Location :**

Nucleus. Cytoplasm.

**Expression :**

Ubiquitously expressed.

**Sort :**

9258

**No4 :**

1

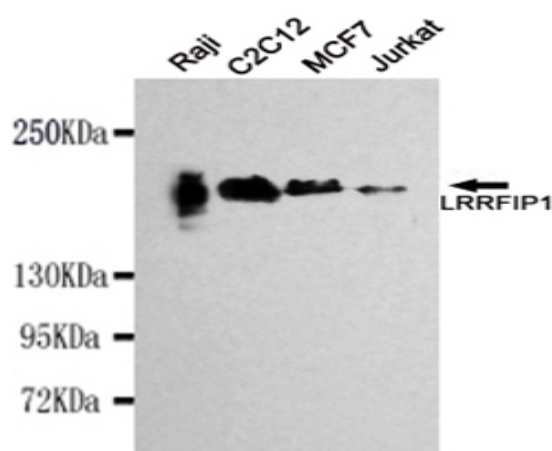
**Host :**

Mouse

**Modifications :**

Unmodified

## Products Images



Western blot detection of LRRFIP1 in Raji,C2C12,MCF7 and Jurkat cell lysates using LRRFIP1 mouse mAb (1:1000 diluted).Predicted band size:89KDa.Observed band size:160KDa.