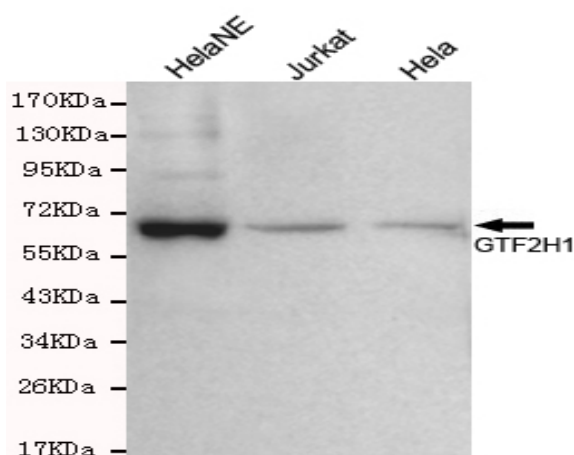


GTF2H1 mouse mAb

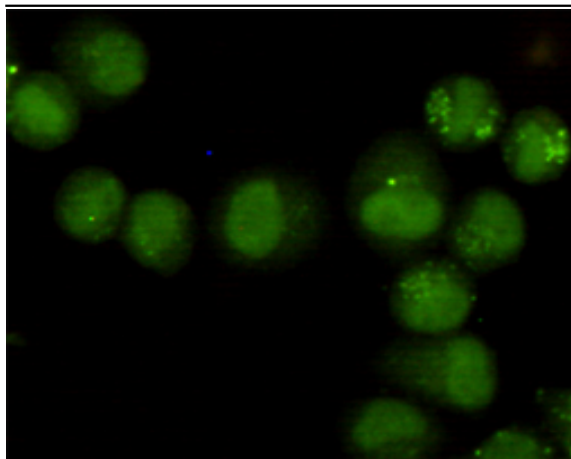
Catalog No :	YM1262
Reactivity :	Human
Applications :	WB;IP;ICC
Target :	TFIIH p62
Fields :	>>Basal transcription factors;>>Nucleotide excision repair;>>Viral carcinogenesis
Gene Name :	gtf2h1
Human Gene Id :	2965
Human Swiss Prot No :	P32780
Mouse Swiss Prot No :	Q9DBA9
Immunogen :	Purified recombinant human GTF2H1 protein fragments expressed in E.coli.
Specificity :	This antibody detects endogenous levels of GTF2H1 and does not cross-react with related proteins.
Formulation :	Liquid in PBS containing 50% glycerol, 0.5% BSA and 0.02% sodium azide.
Source :	Monoclonal, Mouse
Dilution :	wb 1:300 icc 1:50
Purification :	The antibody was affinity-purified from mouse ascites by affinity-chromatography using epitope-specific immunogen.
Concentration :	1 mg/ml
Storage Stability :	-15°C to -25°C/1 year(Do not lower than -25°C)
Observed Band :	62kD

Cell Pathway :	Basal transcription factors;Nucleotide excision repair;
Background :	function:Component of the core-TFIIH basal transcription factor involved in nucleotide excision repair (NER) of DNA and, when complexed to CAK, in RNA transcription by RNA polymerase II.,PTM:Phosphorylated.,similarity:Contains 2 BSD domains.,subunit:One of the six subunits forming the core-TFIIH basal transcription factor. Interacts with PUF60.,
Function :	function:Component of the core-TFIIH basal transcription factor involved in nucleotide excision repair (NER) of DNA and, when complexed to CAK, in RNA transcription by RNA polymerase II.,PTM:Phosphorylated.,similarity:Contains 2 BSD domains.,subunit:One of the six subunits forming the core-TFIIH basal transcription factor. Interacts with PUF60.,
Subcellular Location :	Nucleus.
Expression :	Liver,Lung,
Tag :	ip
Sort :	7193
No4 :	1
Host :	Mouse
Modifications :	Unmodified

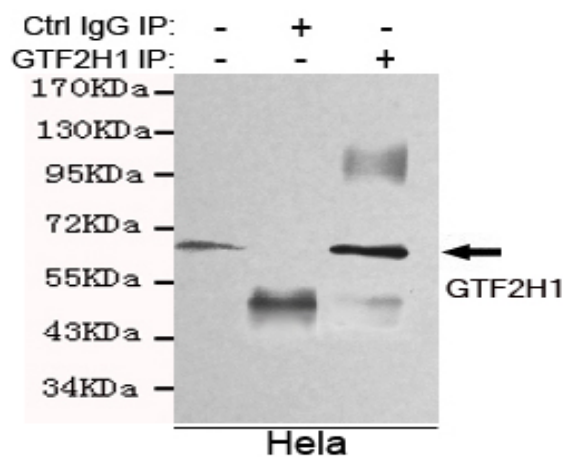
Products Images



Western blot detection of GTF2H1 in HeLa, HeLa NE and Jurkat cell lysates using GTF2H1 mouse mAb (1:300 diluted). Predicted band size: 62KDa. Observed band size: 62KDa.



Immunocytochemistry staining of HeLa cells fixed with 4% Paraformaldehyde and using GTF2H1 mouse mAb (dilution 1:50).



Immunoprecipitation analysis of HeLa cell lysates using GTF2H1 mouse mAb.