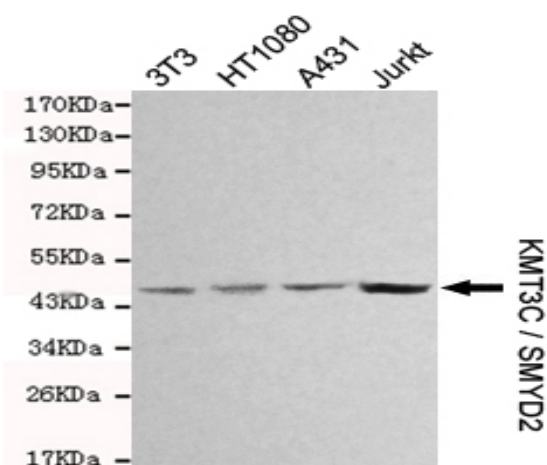


KMT3C/SMYD2 mouse mAb

Catalog No :	YM1214
Reactivity :	Human;Mouse
Applications :	WB
Target :	SMYD2
Fields :	>>Lysine degradation;>>Metabolic pathways
Gene Name :	smyd2
Human Gene Id :	56950
Human Swiss Prot No :	Q9NRG4
Mouse Swiss Prot No :	Q8R5A0
Immunogen :	Purified recombinant human KMT3C / SMYD2 protein fragments expressed in E.coli.
Specificity :	This antibody detects endogenous levels of KMT3C / SMYD2 and does not cross-react with related proteins.
Formulation :	Liquid in PBS containing 50% glycerol, 0.5% BSA and 0.02% sodium azide.
Source :	Monoclonal, Mouse
Dilution :	wb 1:1000
Purification :	The antibody was affinity-purified from mouse ascites by affinity-chromatography using epitope-specific immunogen.
Concentration :	1 mg/ml
Storage Stability :	-15°C to -25°C/1 year(Do not lower than -25°C)
Observed Band :	50kD

Background :	SET and MYND domain containing 2(SMYD2) Homo sapiens SET domain-containing proteins, such as SMYD2, catalyze lysine methylation (Brown et al., 2006 [PubMed 16805913]).[supplied by OMIM, Nov 2008],
Function :	similarity:Contains 1 MYND-type zinc finger.,similarity:Contains 1 SET domain.,
Subcellular Location :	Cytoplasm, cytosol . Nucleus .
Expression :	Brain,Colon,Liver cancer,Testis,
Sort :	8971
No4 :	1
Host :	Mouse
Modifications :	Unmodified

Products Images



Western blot detection of KMT3C / SMYD2 in 3T3,HT1080,A431 and Jurkat cell lysates and using KMT3C / SMYD2 mouse mAb (1:1000 diluted). Predicted band size: 50KDa.Observed band size: 50KDa.