

Eg5 mouse mAb

Catalog No :	YM1211
Reactivity :	Human
Applications :	WB;IP;ICC
Target :	Eg5
Gene Name :	kif11
Human Gene Id :	3832
Human Swiss Prot No :	P52732
Mouse Swiss Prot No :	Q6P9P6
Immunogen :	Purified recombinant human Eg5 protein fragments expressed in E.coli.
Specificity :	This antibody detects endogenous levels of Eg5 and does not cross-react with related proteins.
Formulation :	Liquid in PBS containing 50% glycerol, 0.5% BSA and 0.02% sodium azide.
Source :	Monoclonal, Mouse
Dilution :	wb 1:1000 icc 1:200
Purification :	The antibody was affinity-purified from mouse ascites by affinity-chromatography using epitope-specific immunogen.
Concentration :	1 mg/ml
Storage Stability :	-15°C to -25°C/1 year(Do not lower than -25°C)
Observed Band :	130kD
Background :	kinesin family member 11(KIF11) Homo sapiens This gene encodes a motor protein that belongs to the kinesin-like protein family. Members of this protein

family are known to be involved in various kinds of spindle dynamics. The function of this gene product includes chromosome positioning, centrosome separation and establishing a bipolar spindle during cell mitosis. [provided by RefSeq, Jul 2008],

Function :

function:Motor protein required for establishing a bipolar spindle. Blocking of KIF11 prevents centrosome migration and arrest cells in mitosis with monoastral microtubule arrays.,PTM:Phosphorylated exclusively on serine during S phase, but on both serine and Thr-926 during mitosis, so controlling the association of KIF11 with the spindle apparatus (probably during early prophase). Phosphorylated upon DNA damage, probably by ATM or ATR.,similarity:Belongs to the kinesin-like protein family. BimC subfamily.,similarity:Contains 1 kinesin-motor domain.,subunit:Interacts with the thyroid hormone receptor in the presence of thyroid hormone. Component of a large chromatin remodeling complex, at least composed of MYSM1, PCAF, RBM10 and KIF11/TRIP5.,

Subcellular Location :

Cytoplasm . Cytoplasm, cytoskeleton, spindle pole .

Expression :

Brain,Epithelium,Lung,

Tag :

ip

Sort :

5442

No4 :

1

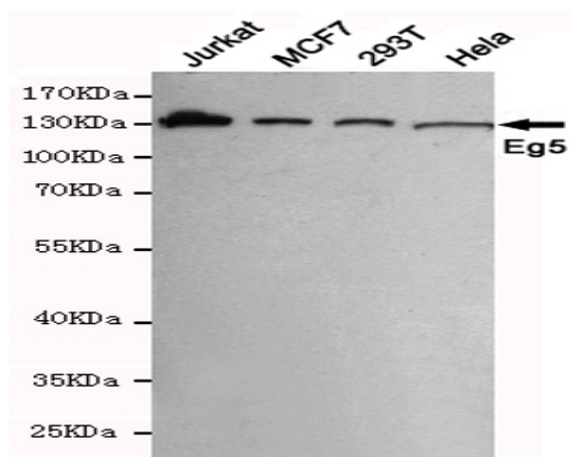
Host :

Mouse

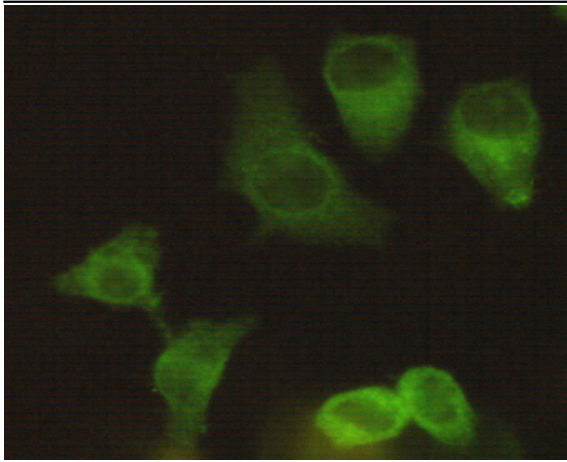
Modifications :

Unmodified

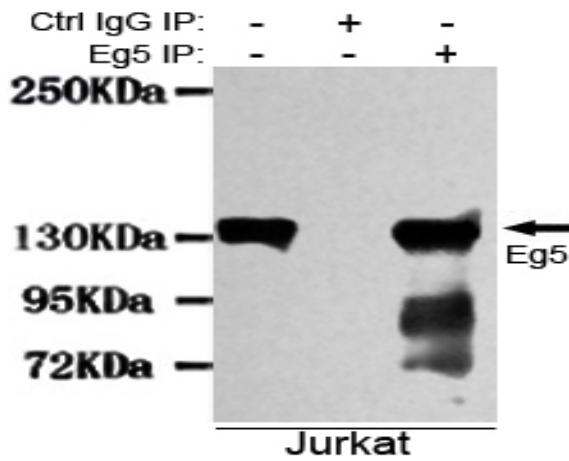
Products Images



Western blot detection of Eg5 in MCF7,293T,Jurkat and HeLa cell lysates using Eg5 mouse mAb (1:1000 diluted).Predicted band size:130KDa.Observed band size:130KDa.



Immunocytochemistry staining of HeLa using Eg5 mouse mAb (1:200).



Immunoprecipitation analysis of Jurkat cell lysates using Eg5 mouse mAb.