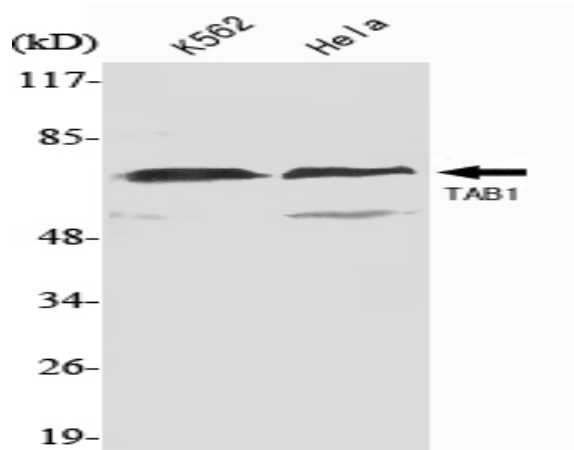


TAB1 Monoclonal Antibody

Catalog No :	YM1101
Reactivity :	Human;Mouse;Rat;Bovine;Dog;Pig
Applications :	WB
Target :	TAB1
Fields :	>>MAPK signaling pathway;>>NF-kappa B signaling pathway;>>Osteoclast differentiation;>>Toll-like receptor signaling pathway;>>NOD-like receptor signaling pathway;>>TNF signaling pathway;>>Alcoholic liver disease;>>Pathogenic Escherichia coli infection;>>Shigellosis;>>Salmonella infection;>>Yersinia infection;>>Leishmaniasis;>>Toxoplasmosis;>>Hepatitis B;>>Herpes simplex virus 1 infection;>>Epstein-Barr virus infection;>>Human immunodeficiency virus 1 infection;>>Lipid and atherosclerosis
Gene Name :	TAB1
Protein Name :	TGF-beta-activated kinase 1 and MAP3K7-binding protein 1
Human Gene Id :	10454
Human Swiss Prot No :	Q15750
Mouse Gene Id :	66513
Mouse Swiss Prot No :	Q8CF89
Immunogen :	Purified recombinant human TAB1 (N-terminus) protein fragments expressed in E.coli.
Specificity :	TAB1 Monoclonal Antibody detects endogenous levels of TAB1 protein.
Formulation :	Liquid in PBS containing 50% glycerol, 0.5% BSA and 0.02% sodium azide.
Source :	Monoclonal, Mouse
Dilution :	WB 1:1000 - 1:2000. Not yet tested in other applications.

Purification :	Affinity purification
Concentration :	1 mg/ml
Storage Stability :	-15°C to -25°C/1 year(Do not lower than -25°C)
Molecularweight :	55kD
Cell Pathway :	MAPK_ERK_Growth;MAPK_G_Protein;Toll_Like;NOD-like receptor;
Background :	<p>The protein encoded by this gene was identified as a regulator of the MAP kinase kinase kinase MAP3K7/TAK1, which is known to mediate various intracellular signaling pathways, such as those induced by TGF beta, interleukin 1, and WNT-1. This protein interacts and thus activates TAK1 kinase. It has been shown that the C-terminal portion of this protein is sufficient for binding and activation of TAK1, while a portion of the N-terminus acts as a dominant-negative inhibitor of TGF beta, suggesting that this protein may function as a mediator between TGF beta receptors and TAK1. This protein can also interact with and activate the mitogen-activated protein kinase 14 (MAPK14/p38alpha), and thus represents an alternative activation pathway, in addition to the MAPKK pathways, which contributes to the biological responses of MAPK14 to various stimuli. Alternatively spliced tr</p>
Function :	<p>function:May be an important signaling intermediate between TGFB receptors and MAP3K7/TAK1. May play an important role in mammalian embryogenesis.,similarity:Contains 1 PP2C-like domain.,subunit:Interacts with MAP3K7, XIAP and BIRC7.,tissue specificity:Ubiquitous.,</p>
Subcellular Location :	nucleoplasm,cytoplasm,cytosol,endosome membrane,protein complex,
Expression :	Ubiquitous.
Sort :	16874
No4 :	1
Host :	Mouse
Modifications :	Unmodified

Products Images



Western Blot analysis using TAB1 Monoclonal Antibody against K562, HeLa cell lysate.