

SmcX Monoclonal Antibody

Catalog No :	YM1096
Reactivity :	Human;Mouse;Rat;Bovine;Dog
Applications :	WB;IF
Target :	SmcX
Gene Name :	KDM5C
Protein Name :	Lysine-specific demethylase 5C
Human Gene Id :	8242
Human Swiss Prot No :	P41229
Mouse Gene Id :	20591
Mouse Swiss Prot No :	P41230
Immunogen :	Purified recombinant human SmcX (C-terminus) protein fragments expressed in E.coli.
Specificity :	SmcX Monoclonal Antibody detects endogenous levels of SmcX protein.
Formulation :	Liquid in PBS containing 50% glycerol, 0.5% BSA and 0.02% sodium azide.
Source :	Monoclonal, Mouse
Dilution :	WB 1:1000 - 1:2000. IF 1:100 - 1:500. Not yet tested in other applications.
Purification :	Affinity purification
Concentration :	1 mg/ml
Storage Stability :	-15°C to -25°C/1 year(Do not lower than -25°C)

Molecularweight : 176kD

Background : This gene is a member of the SMCY homolog family and encodes a protein with one ARID domain, one JmjC domain, one JmjN domain and two PHD-type zinc fingers. The DNA-binding motifs suggest this protein is involved in the regulation of transcription and chromatin remodeling. Mutations in this gene have been associated with X-linked mental retardation. Alternative splicing results in multiple transcript variants. [provided by RefSeq, Apr 2009],

Function : cofactor:Alpha-ketoglutarate.,cofactor:Fe(2+).,disease:Defects in KDM5C are a cause of X-linked mental retardation (XLMR) [MIM:300534]. Mental retardation is usually defined as cognitive impairment with an IQ less than 70. Etiologically, mental retardation is a very heterogeneous condition that involves environmental, stochastic and/or genetic factors.,domain:Both the JmjC domain and the JmjN domain are required for enzymatic activity.,domain:The first PHD-type zinc finger domain recognizes and binds H3-K9Me3.,function:Histone demethylase that specifically demethylates 'Lys-4' of histone H3, thereby playing a central role in histone code. Does not demethylate histone H3 'Lys-9', H3 'Lys-27', H3 'Lys-36', H3 'Lys-79' or H4 'Lys-20'. Demethylates trimethylated and dimethylated but not monomethylated H3 'Lys-4'. Participates in transcriptional repression of neuronal genes by recruiting hist

Subcellular Location : Nucleus .

Expression : Expressed in all tissues examined. Highest levels found in brain and skeletal muscle.

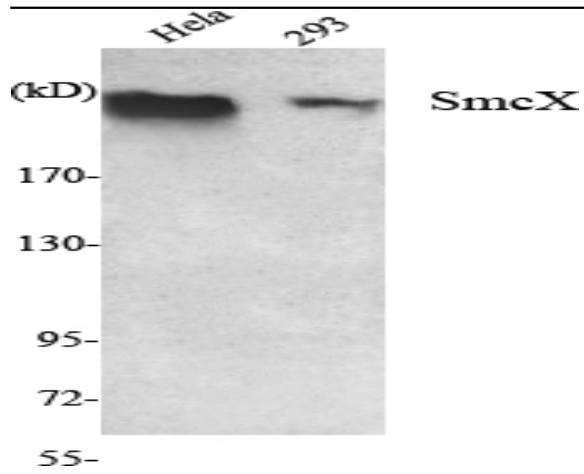
Sort : 16443

No4 : 1

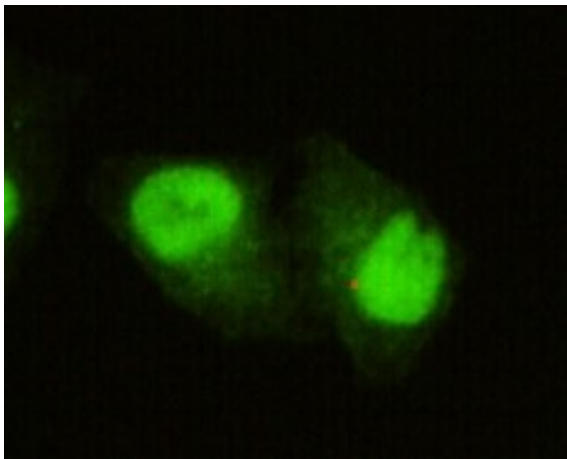
Host : Mouse

Modifications : Unmodified

Products Images



Western Blot analysis using SmcX Monoclonal Antibody against HeLa, 293 cell lysate.



Immunofluorescence analysis of HeLa cells using SmcX Monoclonal Antibody.