

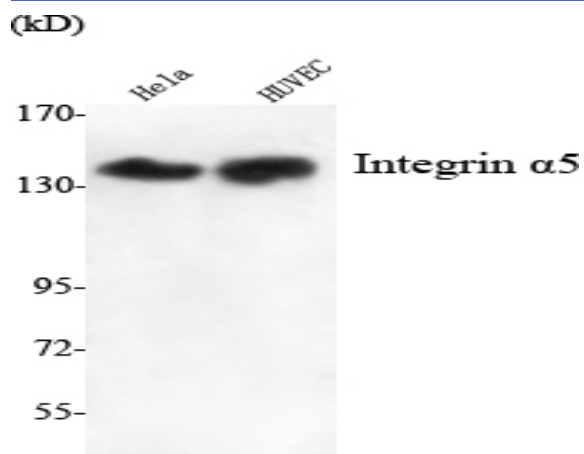
Integrin $\alpha 5$ Monoclonal Antibody

| | |
|------------------------------|---|
| Catalog No : | YM1054 |
| Reactivity : | Human;Mouse;Rat;Bovine |
| Applications : | WB;FCM |
| Target : | Integrin $\alpha 5$ |
| Fields : | >>Phagosome;>>PI3K-Akt signaling pathway;>>Focal adhesion;>>ECM-receptor interaction;>>Hematopoietic cell lineage;>>Regulation of actin cytoskeleton;>>Bacterial invasion of epithelial cells;>>Shigellosis;>>Pertussis;>>Yersinia infection;>>Human papillomavirus infection;>>Herpes simplex virus 1 infection;>>Proteoglycans in cancer;>>MicroRNAs in cancer;>>Hypertrophic cardiomyopathy;>>Arrhythmogenic right ventricular cardiomyopathy;>>Dilated cardiomyopathy |
| Gene Name : | ITGA5 |
| Protein Name : | Integrin alpha-5 |
| Human Gene Id : | 3678 |
| Human Swiss Prot No : | P08648 |
| Mouse Gene Id : | 16402 |
| Mouse Swiss Prot No : | P11688 |
| Immunogen : | Purified recombinant human Integrin $\alpha 5$ (N-terminus) protein fragments expressed in E.coli. |
| Specificity : | Integrin $\alpha 5$ Monoclonal Antibody detects endogenous levels of Integrin $\alpha 5$ protein. |
| Formulation : | Liquid in PBS containing 50% glycerol, 0.5% BSA and 0.02% sodium azide. |
| Source : | Monoclonal, Mouse |

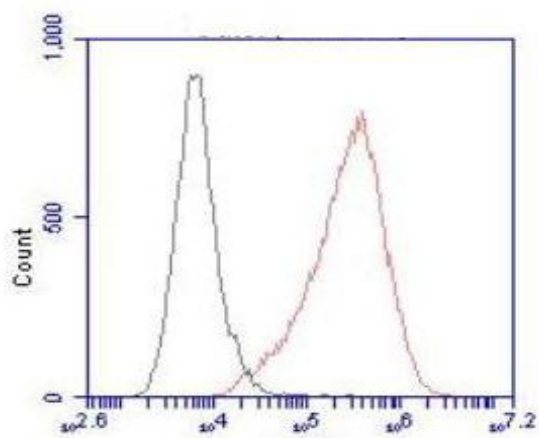
| | |
|-------------------------------|--|
| Dilution : | WB 1:1000 - 1:2000. Flow cytometry: 1:100 - 1:200. Not yet tested in other applications. |
| Purification : | Affinity purification |
| Concentration : | 1 mg/ml |
| Storage Stability : | -15°C to -25°C/1 year(Do not lower than -25°C) |
| Molecularweight : | 115kD |
| Cell Pathway : | Focal adhesion;ECM-receptor interaction;Hematopoietic cell lineage;Regulates Actin and Cytoskeleton;Hypertrophic cardiomyopathy (HCM);Arrhythmogenic right ventricular cardiomyopathy (ARVC);Dilated car |
| Background : | integrin subunit alpha 5(ITGA5) Homo sapiens The product of this gene belongs to the integrin alpha chain family. Integrins are heterodimeric integral membrane proteins composed of an alpha subunit and a beta subunit that function in cell surface adhesion and signaling. The encoded preproprotein is proteolytically processed to generate light and heavy chains that comprise the alpha 5 subunit. This subunit associates with the beta 1 subunit to form a fibronectin receptor. This integrin may promote tumor invasion, and higher expression of this gene may be correlated with shorter survival time in lung cancer patients. Note that the integrin alpha 5 and integrin alpha V subunits are encoded by distinct genes. [provided by RefSeq, Oct 2015], |
| Function : | function:Integrin alpha-5/beta-1 is a receptor for fibronectin and fibrinogen. It recognizes the sequence R-G-D in its ligands. In case of HIV-1 infection, the interaction with extracellular viral Tat protein seems to enhance angiogenesis in Kaposi's sarcoma lesions.,similarity:Belongs to the integrin alpha chain family.,similarity:Contains 7 FG-GAP repeats.,subunit:Heterodimer of an alpha and a beta subunit. The alpha subunit is composed of an heavy and a light chain linked by a disulfide bond. Alpha-5 associates with beta-1. Interacts with HPS5 and NISCH. Interacts with HIV-1 Tat. Interacts with RAB21., |
| Subcellular Location : | Membrane; Single-pass type I membrane protein. Cell junction, focal adhesion . Cell surface . |
| Expression : | Liver,Placenta, |
| Tag : | hot |
| Sort : | 8603 |
| No4 : | 1 |

Host : Mouse**Modifications :** Unmodified

Products Images



Western Blot analysis using Integrin α 5 Monoclonal Antibody against HeLa, HUVEC cell lysate.



Flow cytometric analysis of HeLa cells stained with Integrin α 5 Monoclonal Antibody (red), followed by FITC-conjugated goat anti-mouse IgG. Black line histogram represents the isotype control, normal mouse IgG.