

CSK mouse mAb

Catalog No :	YM1308
Reactivity :	Human;Rat
Applications :	WB;ICC
Target :	CSK
Fields :	>>Epithelial cell signaling in Helicobacter pylori infection
Gene Name :	csk
Human Gene Id :	1445
Human Swiss Prot No :	P41240
Mouse Swiss Prot No :	P41241
Immunogen :	Purified recombinant human CSK protein fragments expressed in E.coli.
Specificity :	This antibody detects endogenous levels of CSK and does not cross-react with related proteins.
Formulation :	Liquid in PBS containing 50% glycerol, 0.5% BSA and 0.02% sodium azide.
Source :	Monoclonal, Mouse
Dilution :	wb 1:1000 icc 1:50
Purification :	The antibody was affinity-purified from mouse ascites by affinity-chromatography using epitope-specific immunogen.
Concentration :	1 mg/ml
Storage Stability :	-15°C to -25°C/1 year(Do not lower than -25°C)
Observed Band :	50kD

Cell Pathway : Chemokine;Neurotrophin;Regulates Actin and Cytoskeleton;Epithelial cell signaling in Helicobacter pylori infection;

Background : catalytic activity:ATP + a [protein]-L-tyrosine = ADP + a [protein]-L-tyrosine phosphate.,function:Specifically phosphorylates 'Tyr-504' on LCK, which acts as a negative regulatory site. Can also act on the LYN and FYN kinases.,PTM:Autophosphorylation of Tyr-304 occurs only at abnormally high CSK concentrations in vitro.,similarity:Belongs to the protein kinase superfamily. Tyr protein kinase family.,similarity:Belongs to the protein kinase superfamily. Tyr protein kinase family. CSK subfamily.,similarity:Contains 1 protein kinase domain.,similarity:Contains 1 SH2 domain.,similarity:Contains 1 SH3 domain.,subcellular location:Mainly cytoplasmic, also present in lipid rafts.,subunit:Interacts with PTPN8 (By similarity). Interacts with phosphorylated SIT1, PAG1, LIME1 and TGFB111.,tissue specificity:Expressed in lung and macrophages.,

Function : catalytic activity:ATP + a [protein]-L-tyrosine = ADP + a [protein]-L-tyrosine phosphate.,function:Specifically phosphorylates 'Tyr-504' on LCK, which acts as a negative regulatory site. Can also act on the LYN and FYN kinases.,PTM:Autophosphorylation of Tyr-304 occurs only at abnormally high CSK concentrations in vitro.,similarity:Belongs to the protein kinase superfamily. Tyr protein kinase family.,similarity:Belongs to the protein kinase superfamily. Tyr protein kinase family. CSK subfamily.,similarity:Contains 1 protein kinase domain.,similarity:Contains 1 SH2 domain.,similarity:Contains 1 SH3 domain.,subcellular location:Mainly cytoplasmic, also present in lipid rafts.,subunit:Interacts with PTPN8 (By similarity). Interacts with phosphorylated SIT1, PAG1, LIME1 and TGFB111.,tissue specificity:Expressed in lung and macrophages.,

Subcellular Location : Cytoplasm . Cell membrane . Mainly cytoplasmic, also present in lipid rafts. .

Expression : Expressed in lung and macrophages.

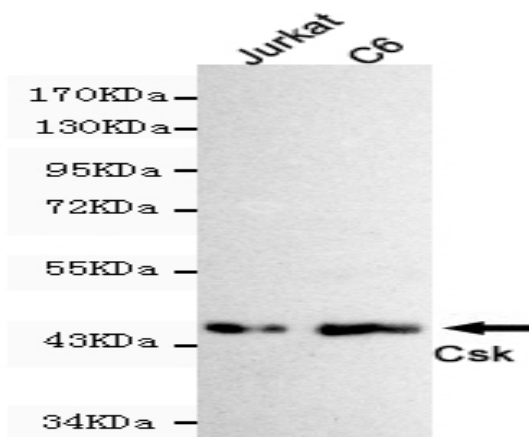
Sort : 4616

No4 : 1

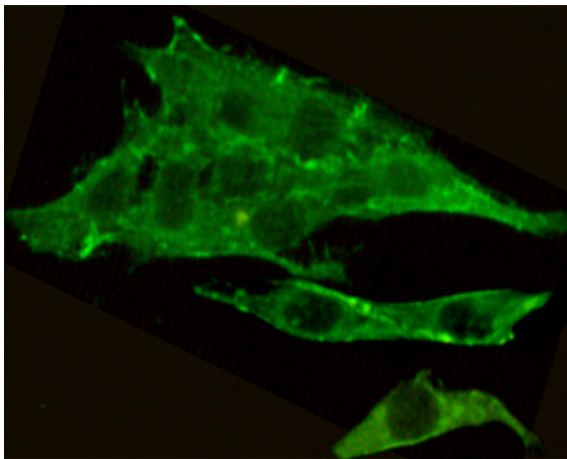
Host : Mouse

Modifications : Unmodified

Products Images



Western blot detection of CSK in C6 and Jurkat cell lysates using CSK mouse mAb (1:1000 diluted). Predicted band size: 50KDa. Observed band size: 50KDa.



Immunocytochemistry staining of C6 cells fixed by anhydrous methanol for 2 h at -20°C and using anti-CSK mouse mAb (dilution 1:50).