

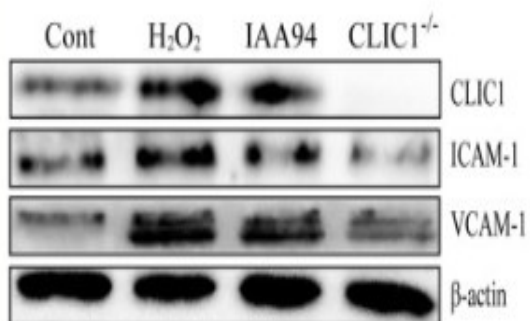
VCAM-1 Monoclonal Antibody

Catalog No :	YM0644
Reactivity :	Human
Applications :	WB;IHC;IF;ELISA
Target :	VCAM-1
Fields :	>>NF-kappa B signaling pathway;>>Cell adhesion molecules;>>TNF signaling pathway;>>Leukocyte transendothelial migration;>>AGE-RAGE signaling pathway in diabetic complications;>>African trypanosomiasis;>>Malaria;>>Lipid and atherosclerosis;>>Fluid shear stress and atherosclerosis
Gene Name :	VCAM1
Protein Name :	Vascular cell adhesion protein 1
Human Gene Id :	7412
Human Swiss Prot No :	P19320
Mouse Swiss Prot No :	P29533
Immunogen :	Purified recombinant fragment of human VCAM-1 expressed in E. Coli.
Specificity :	VCAM-1 Monoclonal Antibody detects endogenous levels of VCAM-1 protein.
Formulation :	Liquid in PBS containing 50% glycerol, 0.5% BSA and 0.02% sodium azide.
Source :	Monoclonal, Mouse
Dilution :	WB 1:500 - 1:2000. IHC 1:200 - 1:1000. ELISA: 1:10000.. IF 1:50-200
Purification :	Affinity purification
Storage Stability :	-15°C to -25°C/1 year(Do not lower than -25°C)
Molecularweight :	81kD

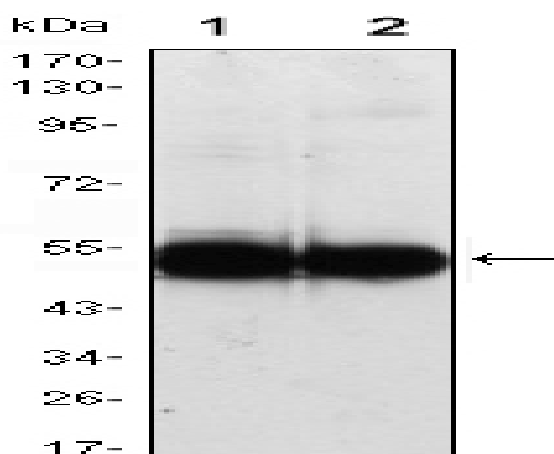
Cell Pathway :	Cell adhesion molecules (CAMs);Leukocyte transendothelial migration;
P References :	1. Cell Adh Migr. 2009 Oct;3(4):369-72. 2. Arthritis Rheum. 2010 Jan;62(1):105-16.
Background :	This gene is a member of the Ig superfamily and encodes a cell surface sialoglycoprotein expressed by cytokine-activated endothelium. This type I membrane protein mediates leukocyte-endothelial cell adhesion and signal transduction, and may play a role in the development of atherosclerosis and rheumatoid arthritis. Three alternatively spliced transcripts encoding different isoforms have been described for this gene. [provided by RefSeq, Dec 2010],
Function :	alternative products:Additional isoforms seem to exist,disease:May play an important role in the genesis of atherosclerosis and rheumatoid arthritis.,domain:Either the first or the fourth Ig-like C2-type domain is required for VLA4-dependent cell adhesion.,function:Important in cell-cell recognition. Appears to function in leukocyte-endothelial cell adhesion. Interacts with the beta-1 integrin VLA4 on leukocytes, and mediates both adhesion and signal transduction. The VCAM1/VLA4 interaction may play a pathophysiologic role both in immune responses and in leukocyte emigration to sites of inflammation.,induction:By cytokines (e.g. IL-1, TNF-alpha).,online information:VCAM-1,online information:VCAM1 entry,PTM:Sialoglycoprotein.,similarity:Contains 7 Ig-like C2-type (immunoglobulin-like) domains.,subunit:Binds to ECMV-D capsid proteins and acts as a receptor for this virus.,tissue specificit
Subcellular Location :	Membrane; Single-pass type I membrane protein.
Expression :	Expressed on inflamed vascular endothelium, as well as on macrophage-like and dendritic cell types in both normal and inflamed tissue.
Tag :	orthogonal
Sort :	495
No4 :	1
Host :	Mouse
Modifications :	Unmodified

Products Images

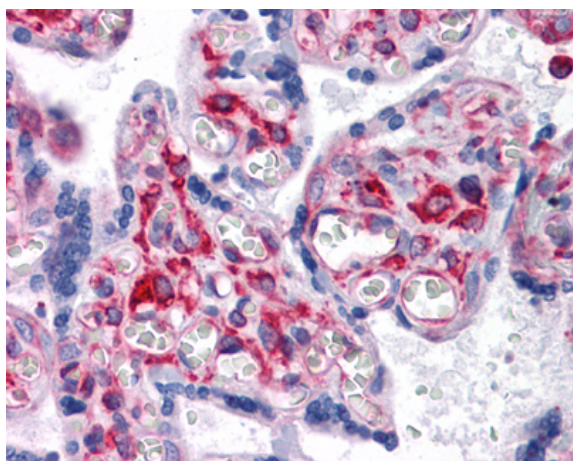
C



Xu, Yingling, et al. "CLIC1 inhibition attenuates vascular inflammation, oxidative stress, and endothelial injury." PloS one 11.11 (2016): e0166790.



Western Blot analysis using VCAM-1 Monoclonal Antibody against HUVEC (1) and EC (2) cell lysate.



Immunohistochemistry analysis of paraffin-embedded human Placenta tissues with AEC staining using VCAM-1 Monoclonal Antibody.