

## Tyro3 Monoclonal Antibody

<b>Catalog No :</b>	YM0639
<b>Reactivity :</b>	Human
<b>Applications :</b>	WB;IF;ELISA
<b>Target :</b>	Tyro3
<b>Gene Name :</b>	TYRO3
<b>Protein Name :</b>	Tyrosine-protein kinase receptor TYRO3
<b>Human Gene Id :</b>	7301
<b>Human Swiss Prot No :</b>	Q06418
<b>Mouse Swiss Prot No :</b>	P55144
<b>Immunogen :</b>	Purified recombinant fragment of Tyro3 expressed in E. Coli.
<b>Specificity :</b>	Tyro3 Monoclonal Antibody detects endogenous levels of Tyro3 protein.
<b>Formulation :</b>	Liquid in PBS containing 50% glycerol, 0.5% BSA and 0.02% sodium azide.
<b>Source :</b>	Monoclonal, Mouse
<b>Dilution :</b>	WB 1:500 - 1:2000. IF 1:200 - 1:1000. ELISA: 1:10000. Not yet tested in other applications.
<b>Purification :</b>	Affinity purification
<b>Storage Stability :</b>	-15°C to -25°C/1 year(Do not lower than -25°C)
<b>Molecularweight :</b>	97kD
<b>P References :</b>	<ol style="list-style-type: none"><li>1. Janssen, J.W.G., et al. 1991. Oncogene 6: 2113-2120.</li><li>2. Schlessinger, J., et al. 1992. Neuron 9: 383-391.</li><li>3. Biesecker, L.G., et al. 1995. Oncogene 10: 2239-2242.</li></ol>

**Background :** The gene is part of a 3-member transmembrane receptor kinase receptor family with a processed pseudogene distal on chromosome 15. The encoded protein is activated by the products of the growth arrest-specific gene 6 and protein S genes and is involved in controlling cell survival and proliferation, spermatogenesis, immunoregulation and phagocytosis. The encoded protein has also been identified as a cell entry factor for Ebola and Marburg viruses. [provided by RefSeq, May 2010],

**Function :** catalytic activity:ATP + a [protein]-L-tyrosine = ADP + a [protein]-L-tyrosine phosphate.,function:May be involved in cell adhesion processes, particularly in the central nervous system. In case of filovirus infection, seems to function as a cell entry factor.,similarity:Belongs to the protein kinase superfamily. Tyr protein kinase family.,similarity:Belongs to the protein kinase superfamily. Tyr protein kinase family. AXL/UFO subfamily.,similarity:Contains 1 protein kinase domain.,similarity:Contains 2 fibronectin type-III domains.,similarity:Contains 2 Ig-like C2-type (immunoglobulin-like) domains.,subunit:Monomer and homodimer. Interacts with GAS6.,tissue specificity:Abundant in the brain and lower levels in other tissues.,

**Subcellular Location :** Cell membrane; Single-pass type I membrane protein.

**Expression :** Abundant in the brain and lower levels in other tissues.

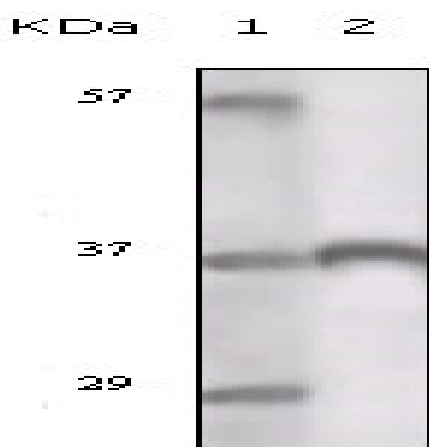
**Sort :** 23799

**No4 :** 1

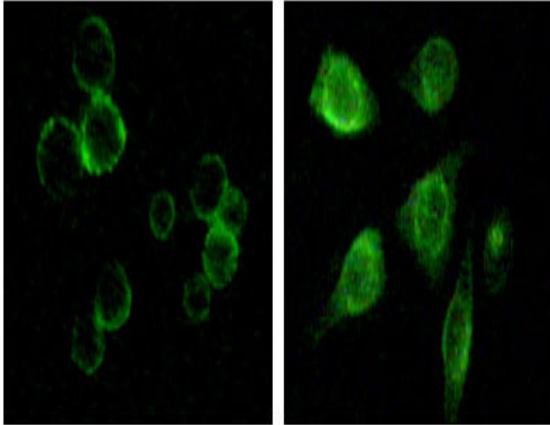
**Host :** Mouse

**Modifications :** Unmodified

## Products Images



Western Blot analysis using Tyro3 Monoclonal Antibody against truncated Tyro3 recombinant protein.



Immunofluorescence staining of methanol-fixed MCF-7 and HepG2 cells showing membrane and cytoplasmic localization using Tyro3 Monoclonal Antibody.